

---

# 936E

## EXCAVATOR

### Engine

Cummins QSL9 Tier 4 Final

### Gross Power

296 hp (221 kW)

### Operating Weight

83,335 lb (37,800 kg)

### Bucket Capacity

2.09 yd<sup>3</sup> (1.6 m<sup>3</sup>)



TOUGH WORLD. TOUGH EQUIPMENT.

---

# UNBEATABLE RETURN ON YOUR INVESTMENT

LiuGong's **customer-driven** design and **quality-focused** engineering creates lasting value that will deliver to your bottom line.

## DEPENDABLE POWER

Unmatched performance driven by the Cummins QSL9 Tier 4 Final Engine.

## IPC (INTELLIGENT POWER CONTROL)

IPC ensures the mechanical, electrical, and hydraulic systems work in perfect harmony for efficient precise control. Maximizing torque outlet with more power and breakout force.

## AUTO-IDLE SPEED FUNCTION

Hydraulic signals detect activity, decreasing, and increasing engine speed as required. Power is supplied only as needed, achieving optimum fuel efficiency.

## VERSATILITY

Options for auxiliary hydraulic piping include bi-directional variable high flow lines, an additional line for rotating attachments and a single acting line. The quick coupler further ensures you get the most out of your machine by easily switching between a wide range of attachments to suit your needs.



---

## BOOM AND ARM

Boom and arm structures are designed for long-term durability and resistance to bending and torsional stress. Large cross-sectional areas incorporate one-piece steel castings to provide improved strength and standard rock guard plates and vertical guards further protect the arm in rocky conditions.

---

## UNDERCARRIAGE

Outstanding stability and durability come from an X-type reinforced frame and the long track beam and crawler system.

---

## REAR VIEW CAMERA

Like an extra eye outside the machine, the standard rear view camera sends images to the in-cab color LCD monitor, creating a safer working environment as you concentrate on the work at hand.

---

## PARTS

Using genuine LiuGong parts is key to keeping your costs low and your machine in top working order. Our extensive support network is always there when you need it, to maximize your business profitability.

---

## AFTER SALES SERVICE

As a customer of LiuGong you can feel confident that our dealers and regional offices will be there to support you with training, service and maintenance needed throughout the life of your machine.



# DESIGNED TO GET MORE DONE

The 936E is designed to **get more done** in less time. Featuring a stronger boom, arm and bucket breakout force, greater hydraulic flow, higher swing speeds and improved cycle times, this excavator will power **through any task** in any terrain.

## POWERFUL PERFORMANCE

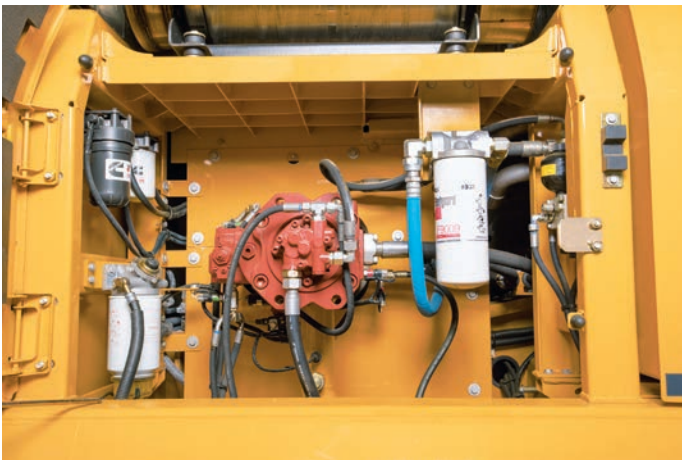
The Cummins QSL9 engine produces gross power of 221 kW (296 hp) and torque of 1,451 N-m (1,070 lb-ft). LiuGong has harnessed this power for six working modes to the job at hand and even the least experienced of operators will find they can work faster and complete more in less time.

## OPTIMIZED HYDRAULICS

Where intelligence meets brute force. Load-sensing hydraulics direct the engine's power to ensure hydraulic pump flow continually adjusts for smooth, quick, and efficient operation.

## OPERATOR FRIENDLY ENVIRONMENT

Ergonomically designed controls, clear and informative displays, increased visibility, and exceptional comfort increases operator efficiency and safety.



# EFFICIENCY, PRECISION & VERSATILITY

LiuGong E-Series excavators deliver the **perfect balance** of performance, precision, and quality. The 936E model is powered by the latest generation, low emissions Cummins QSL9 engine, with enhanced power output, **improved breakout force** and faster cycle times.

## A POWERFUL ENGINE

Cummins QSL9 engine meets strict US EPA Tier 4 Final emissions standards. Delivering the greatest possible fuel economy without compromising on power.

Cummins designed integration system:

- Combustion technology
- Cummins Aftertreatment system
- EGR (Exhaust Gas Recirculation)
- VGT (Variable Geometry Turbocharger) improves boost across all engine speeds
- Latest after treatment technology. Together increases engine performance, improves fuel economy while reducing exhaust emissions to US EPA standards.

## SAFETY STANDARDS

All LiuGong E-Series excavators come with certified ROPS (Rollover Protective System) cabs meeting ISO safety standards. LiuGong offers FOPS (Falling Object Protective Structure) as an option on all E-Series excavators.

## ALL AROUND VISION FEATURES

LiuGong's E-Series cabs have seven percent larger glass surface area compared to our D-Series cab. Combined with standard rear view camera gives the operator a panoramic view. Combined with optional LED work lights provides clearer line of sight on jobsites.



# ALL AROUND COMFORT

In the 936E cab, you're working in complete **comfort** with outstanding **visibility** all around. We understand how operators like to work and have designed the cab for **maximum comfort** and ultimate productivity.

## AT HOME IN THE CAB

The E-Series cab is ROPS ISO 12117-2 certified mounted on dampener silicone to absorb noise and vibration. Wide spacious cab door swings full open to lock position. Front windshield slides up into ceiling, removable lower window, large roof skylight with sun screen.

## ADVANCED CLIMATE CONTROL

Pressurized cab, advanced climate control, air is circulating through cab by ten outlets to improve air circulation and front windshield defrost allow year round operator comfort in any environment.

## ADJUSTABLE SEAT AND JOYSTICK CONSOLE

The adjustable seat and joystick console move independently to accommodate the operator. Increased spacing between the armrest and nine different seat adjustments allow the operator more options to all foot and hand controls to maximum comfort.



# MONITORING & SERVICING MADE EASY

LiuGong's new display interface can bring to the operator's attention **more features** than ever before.



## ON BOARD MONITORING

LiuGong's new on board monitoring LCD display interface with audible sound alerts the operator to low fluid levels, high level machine warnings, and when maintenance service is needed. When fuel level is low, or DEF (Diesel Exhaust Fluid) is low, a text warning will appear where date and time is located on monitor. In addition, an audible buzz will sound to alert the operator to what action is needed. If this is a low-level fault, the buzz sound can be cancelled.



## TRAVEL CAMERA STANDARD

When traveling in forward or reverse the display changes to a camera monitor. A camera mounted on rear of counterweight gives the operator an excellent view of what is behind the counterweight. This function can be accessed anytime by pressing the F3 switch.



## MAINTENANCE MENU INTERFACE OPERATION

With easy access to the maintenance menu through our monitor, the operator can confirm which items should be checked 8 hours, 50 hours, and 100 hours up to 2000 hours.

Here you can easily track the various maintenance parameters of your machine to confirm your excavator is receiving the proper care which will extend the life of your machine.

# ALWAYS STRONG ALWAYS RELIABLE

The use of thick, high-tensile steel components, internal baffling, and stress-relieved plates, make the structures on LiuGong E-Series excavators **tough and durable**.

We guarantee the **quality and reliability** of our machines throughout the manufacturing process by conducting stringent tests and ultrasound inspections that detect defects well before they make it into production.



## BOOM & ARM

The boom and arm structures are designed with large cross-sectional supports and incorporates one-piece steel castings. Standard rock-guard plates and vertical guards protect the arm in rocky digging conditions and tough environments.

## UPPER STRUCTURE

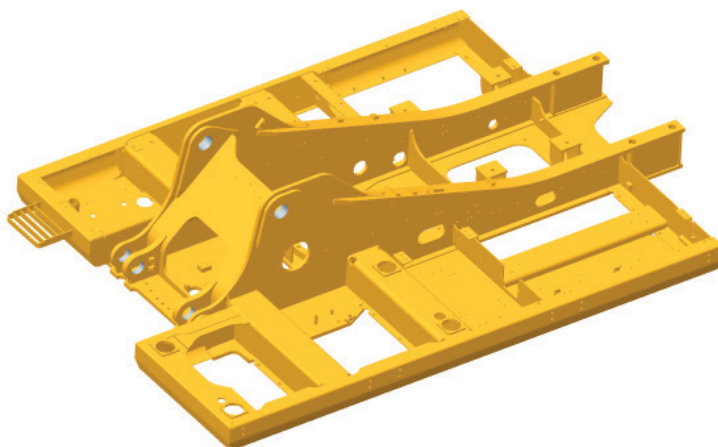
The upper structure is strongly reinforced by the use of an H-beam in the high cross section of the main structure providing even weight distribution and increasing stability.

The platform's collision protection system has been welded into place to improve its strength, rigidity and overall service life.

## UNDERCARRIAGE

The high-strength undercarriage of the 936E incorporates a welded X-frame construction for long life durability and is designed to perform in the most challenging applications.

A long track beam and crawler system provides greater stability when using attachments for digging and truck loading. The result is outstanding strength and durability.





# PART OF YOUR PERFORMANCE

LiuGong engineering sets high standards and all parts are rigorously tested to ensure they can meet the rigid quality specifications required for long lasting performance. No matter where you are in **North America**, we can ensure fast and efficient parts support to keep you going.



We know that confidence in your machine and those who support it is essential. At LiuGong North America we make sure we can always get what you need without delay, via our global parts depot, and the support of our local dealer network.

## READY FOR ANY JOB

LiuGong provides a range of purpose designed attachments, hitches and tools for your 936E to give you increased versatility for any jobsite. In-cab dial-in hydraulic flow settings through the display screen optimizes the attachment performance.



**BUCKETS**



**QUICK COUPLER**

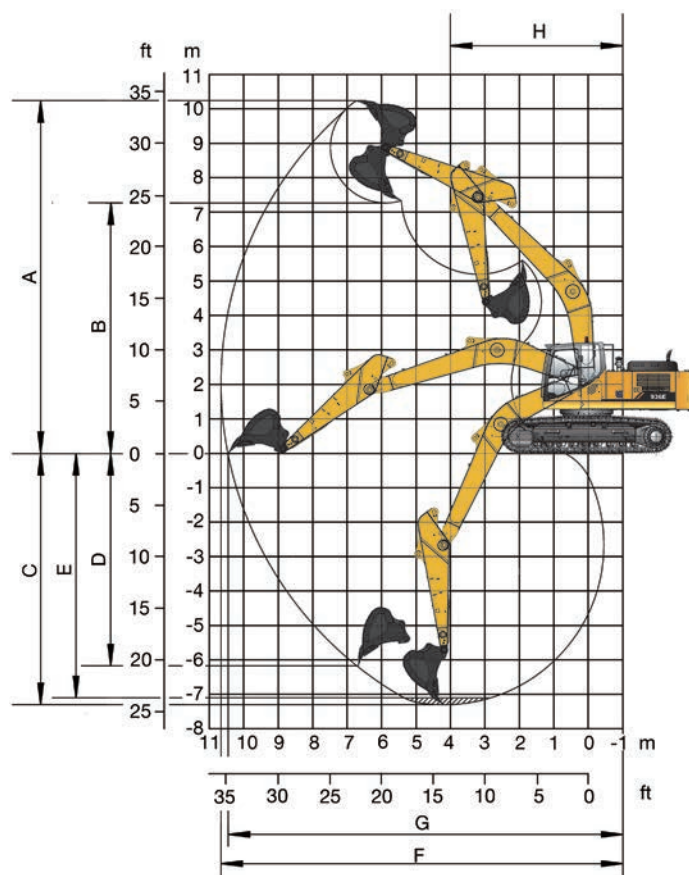


**HAMMER**

# SPECIFICATIONS

ENGINE	
<b>Description</b>	
Cummins Tier 4 Final 9 liter 6-cylinder Variable-Geometry Turbocharger (VGT) Air Cleaner: Cummins direct flow air filter.	
Emissions rating	EPA Tier 4 Final / Stage IV
Make	Cummins
Model	QSL9
Aspiration	Variable-Geometry Turbocharger
Charged air cooling	Aftercooler
Cooling fan drive	Viscous clutch
Displacement	9 L (549 in <sup>3</sup> )
Gross power	221 kW (296 hp) @ 2,000 rpm
Net power	209 kW (280 hp) @ 2,000 rpm
Peak torque	1,451 N-m (1,070 lb-ft) @ 1,400 rpm
Number of Cylinders	6
Bore × Stroke	114 × 145 mm (4.5 × 5.7 in)
HYDRAULIC SYSTEM	
<b>Main pump</b>	
Type	Two variable displacement piston pumps
Maximum flow	2 × 300 L/min (79 gal/min)
<b>Pilot pump</b>	
Type	Gear pump
Maximum flow	19 L/min (5 gal/min)
<b>Relief valve setting</b>	
Implement	34.3/37.3 MPa (4,975 / 5,410 psi)
Travel circuit	34.3 MPa (4,975 psi)
Slew circuit	26.2 MPa (3,800 psi)
Pilot circuit	3.9 MPa (566 psi)
<b>Hydraulic cylinders</b>	
Boom Cylinder Bore × Stroke	140 mm × 1,505 mm (5.5 in × 4 ft 11 in)
Arm Cylinder Bore × Stroke	170 mm × 1,785 mm (6.7 in × 5 ft 10 in)
Bucket Cylinder Bore × Stroke	145 mm × 1,220 mm (5.7 in × 4 ft 0 in)
SERVICE CAPACITIES	
Fuel tank	620 L (163.8 gal)
Engine oil	30 L (7.9 gal)
Final drive (each)	9.5 L (2.5 gal)
Swing drive	10.5 L (2.8 gal)
Cooling system	37 L (9.8 gal)
Hydraulic reservoir	240 L (63.4 gal)
Hydraulic system total	450 L (118.9 gal)
DEF tank	35 L (9.2 gal)
UNDERCARRIAGE	
Track shoe each side	48
Link pitch	216 mm (8.5 in)
Shoe width, triple grouser	800 mm (31.5 in)
Bottom rollers each side	9
Top rollers each side	2
SWING SYSTEM	
<b>Description</b>	
Planetary gear reduction driven by high torque axial piston motor, with oil disk brake. Swing parking brake resets within five seconds after swing pilot controls return to neutral.	
Swing speed	10.0 rpm
Swing torque	111,000 N-m (81,869 lb-ft)
DRIVE AND BRAKES	
<b>Description</b>	
2-speed axial piston motors with oil disk brakes. Steering controlled by two detachable hand levers with pedals.	
Max. travel speed	High: 5.5 km/h (3.4 mph) Low: 3.4 km/h (2.1 mph)
Gradeability	35° / 70%
Max. drawbar pull	320 kN (71,938 lbf)
ELECTRIC SYSTEM	
System voltage	24V
Batteries	2 x 12V
Alternator	24V - 70A
Starter motor	24V - 7.8 kW (24V - 10.5 hp)
SOUND PERFORMANCE	
Interior sound level (ISO 6396)	75 dB(A)
Exterior sound level (ISO 6395)	105 dB(A)

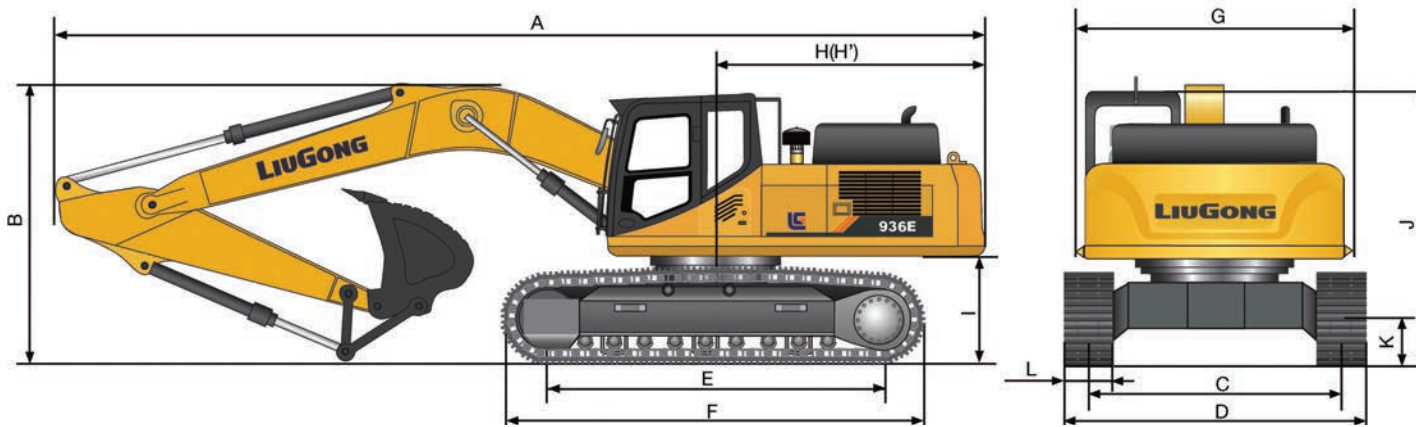
# SPECIFICATIONS



## WORKING RANGES

Description		Standard Arm	Short Arm
Boom		6.4 m (21 ft 0 in)	6.4 m (21 ft 0 in)
Arm options		3.2 m (10 ft 6 in)	2.6 m (8 ft 6 in)
A Max. digging height		10,240 mm (33 ft 7 in)	9,830 mm (32 ft 3 in)
B Max. dumping height		7,160 mm (23 ft 6 in)	6,900 mm (22 ft 7 in)
C Max. digging depth		7,340 mm (24 ft 1 in)	6,730 mm (22 ft 1 in)
D Max. vertical wall digging depth		6,460 mm (21 ft 2 in)	4,430 mm (14 ft 7 in)
E Max. digging depth 2.4m (8 ft) level bottom		7,180 mm (23 ft 7 in)	6,530 mm (21 ft 5 in)
F Max. digging reach		11,100 mm (36 ft 5 in)	10,560 mm (34 ft 8 in)
G Max. digging reach at ground level		10,900 mm (35 ft 9 in)	10,350 mm (33 ft 11 in)
H Min. swing radius		4,465 mm (14 ft 8 in)	4,700 mm (15 ft 5 in)
Bucket digging force (ISO)	Normal	232 kN (52,155 lbf)	232 kN (52,155 lbf)
	Power boost	252 kN (56,651 lbf)	252 kN (56,651 lbf)
Arm digging force (ISO)	Normal	170 kN (38,217 lbf)	210 kN (47,209 lbf)
	Power boost	185 kN (41,589 lbf)	228 kN (51,265 lbf)
Bucket capacity		1.6 m <sup>3</sup> (2.09 yd <sup>3</sup> )	1.9 m <sup>3</sup> (2.48 yd <sup>3</sup> )
Bucket tip radius		1,687 mm (5 ft 6 in)	1,687 mm (5 ft 6 in)

# SPECIFICATIONS

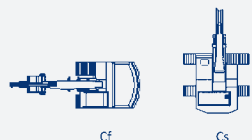


DIMENSIONS		
	Standard Arm	Short Arm
Boom	6.4 m (21 ft 0 in)	
Arm options	3.2 m (10 ft 6 in)	2.6 m (8 ft 6 in)
A Shipping length	11,167 mm (36 ft 8 in)	11,350 mm (37 ft 3 in)
B Shipping height top of boom	3,530 mm (11 ft 7 in)	3,800 mm (12 ft 6 in)
C Track gauge	2,590 mm (8 ft 6 in)	2,590 mm (8 ft 6 in)
D Undercarriage width	3,390 mm (11 ft 1 in)	3,390 mm (11 ft 1 in)
E Length to center of rollers	4,050 mm (13 ft 3 in)	4,050 mm (13 ft 3 in)
F Track length	4,944 mm (16 ft 2 in)	4,944 mm (16 ft 2 in)
G Overall width of upper structure	3,163 mm (10 ft 4 in)	3,163 mm (10 ft 4 in)
H Tail swing radius	3,500 mm (11 ft 6 in)	3,500 mm (11 ft 6 in)
I Counterweight ground clearance	1,172 mm (3 ft 10 in)	1,172 mm (3 ft 10 in)
J Overall height of cab	3,318 mm (10 ft 10 in)	3,318 mm (10 ft 10 in)
K Min. ground clearance	532 mm (1 ft 9 in)	532 mm (1 ft 9 in)
L Track shoe width	800 mm (31.5 in)	800 mm (31.5 in)

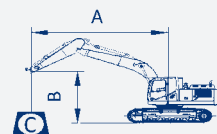
# SPECIFICATIONS

## 936E WITH 800 MM (31.5 IN) SHOES, 3.2 M (10 FT 6 IN) ARM

A: Reach from swing center  
 B: Bucket hook height  
 C: Lifting capacity  
 Cf: Rating over front  
 Cs: Rating over side



Conditions:  
 Boom length: 6.4 m (21 ft 0 in)  
 Arm length: 3.2 m (10 ft 6 in)  
 Counterweight: 16,976 lb (7,700 kg)  
 Shoes: 800 mm (31.5 in) triple grouser  
 Bucket: SAE 1.6 m<sup>3</sup> (2.09 yd<sup>3</sup>), 4,222 lb (1,915 kg)



### A Reach: m (ft)

B: Height m (ft)		3.0 m (10 ft)		4.6 m (15 ft)		6.1 m (20 ft)		7.6 m (25 ft)		9.1 m (30 ft)		MAX REACH		
		Cf	Cs	Cf	Cs	Cf	Cs	Cf	Cs	Cf	Cs	Front	Side	Distance
6.1 m 20 ft	kg							*7,949	7,052			*7,828	9,119	8.2 m
	lb							*17,525	15,549			*17,258	13,492	27 ft
4.6 m 15 ft	kg					*9,657	9,482	*8,469	6,852			*7,912	5,381	8.8 m
	lb					*21,292	20,906	*18,671	15,108			*17,443	11,865	29 ft
3.0 m 10 ft	kg			*14,925	13,302	*11,055	8,963	*9,177	6,592	*8,127	5,085	*8,078	5,004	9.1 m
	lb			*32,904	29,326	*24,374	19,762	*20,234	14,535	*17,919	11,212	*17,809	11,032	30 ft
1.5 m 5 ft	kg			*17,051	12,460	*12,272	8,513	*9,844	6,348	8,598	4,970	7,716	4,894	9.1 m
	lb			*37,593	27,471	*27,057	18,770	*21,704	13,995	18,957	10,957	17,013	10,791	30 ft
0 m 0 ft	kg			*17,696	12,119	*12,951	8,233	*10,254	6,177	8,123	4,712	7,887	4,825	9.1 m
	lb			*39,015	26,720	*28,554	18,152	*22,608	13,618	17,910	10,390	17,390	10,639	30 ft
-1.5 m -5 ft	kg	*23,816	*23,816	*17,213	12,078	*12,941	8,132	*10,205	6,108	*6,193	3,205	8,627	5,239	8.5 m
	lb	*52,507	*52,507	*37,988	26,629	*28,532	17,930	*22,500	13,468	*13,655	7,066	19,021	11,552	28 ft
-3.0 m -10 ft	kg	*21,312	*21,312	*15,813	12,224	*12,110	8,190	*9,363	6,177			*9,186	6,081	7.6 m
	lb	*46,985	*46,985	*34,862	26,951	*26,698	18,058	*20,642	13,620			*20,252	13,408	25 ft
-4.6 m -15 ft	kg	*7,115	*17,115	*13,100	12,558	*9,940	8,439					*9,101	7,782	6.4 m
	lb	*37,734	*37,734	*28,881	27,687	*21,914	18,607					*20,066	17,158	21 ft

1. \* Indicates the load is limited by hydraulic capacity rather than the tipping capacity.

2. The above loads are in compliance with the ISO 10567 hydraulic rating standard. They do not exceed 87% of the hydraulic lifting capacity of 75% tipping load.

3. Rating at bucket lift hook.

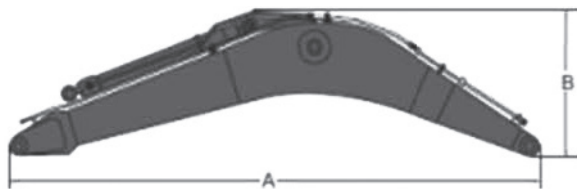
# SPECIFICATIONS

## MACHINE WEIGHTS AND GROUND PRESSURE

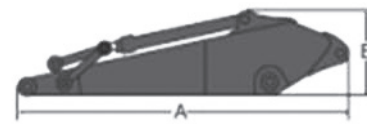
Operating weight includes boom 6.4 m (21 ft 0 in), arm 3.2 m (10 ft 6 in), bucket 1.6 m<sup>3</sup> (2.09 yd<sup>3</sup>) counterweight 7,700 kg (16,976 lb) full fuel tank, and operator.

Shoe Width	Operating Weight	Ground Pressure	Overall Width
800 mm	37,800 kg	51.2 kPa	3,390 mm
31.5 in	83,335 lb	7.4 psi	11 ft 1 in

**Boom**



**Arm**



### BOOM DIMENSIONS

#### Description

	Standard
Boom	6.4 m (21 ft 0 in)
Length	6,692 mm (21 ft 11 in)
Height	1,980 mm (6 ft 6 in)
Width	813 mm (2 ft 8 in)
Weight	3,250 kg (7,165 lb)
Includes cylinder, piping and pin, excludes boom cylinder pin.	

### ARM DIMENSIONS

#### Description

	Standard	Short
Arm	3.2 m (10 ft 6 in)	2.6 m (8 ft 6 in)
Length	4,376 mm (14 ft 4 in)	3,873 mm (12 ft 8 in)
Height	1,055 mm (3 ft 5 in)	1,155 mm (3 ft 9 in)
Width	652 mm (2 ft 2 in)	655 mm (2 ft 2 in)
Weight	1,880 kg (4,144 lb)	1,730 kg (3,813 lb)
Includes cylinder, piping and pin, excludes boom cylinder pin.		

## BUCKET SELECTION GUIDE

Bucket Type	Capacity	Cutting Width	Weight	Teeth Pcs	HD Boom 6.4 m (21 ft 0 in) Shoes 800 mm (31.5 in)
General Purpose	1.6 m <sup>3</sup> (2.09 yd <sup>3</sup> )	1,372 mm (54 in)	1,915 kg (4,222 lb)	5	□
	1.9 m <sup>3</sup> (2.5 yd <sup>3</sup> )	1,660 mm (65 in)	2,045 kg (4,508 lb)	5	X
Heavy Duty	1.6 m <sup>3</sup> (2.1 yd <sup>3</sup> )	1,372 mm (54 in)	1,915 kg (4,222 lb)	5	◇
	1.9 m <sup>3</sup> (2.5 yd <sup>3</sup> )	1,660 mm (65 in)	2,045 kg (4,508 lb)	5	X

Maximum material density

◇ Used with material weights 1,200 - 1,300 kg/m<sup>3</sup> (2,023 - 2,191 lb yd<sup>3</sup>) Coal, Caliche, Shale

□ Used with material weights up to 1,400 - 1,600 kg/m<sup>3</sup> (2,360 - 2,697 lb yd<sup>3</sup>) wet earth and clay, Limestone, Sandstone

X Not Recommended



# STANDARD EQUIPMENT

## ENGINE

- Cummins QSL9 certified to stringent US EPA Tier 4 Final emissions standards
- Auto idle speed control
- 2 Stage air filters with pre-cleaner
- VGT (Variable Geometry Turbocharger)
- Fuel system pre-filter with water separator
- Radiator, oil cooler and intercooler
- IPC (Intelligent Power Control) system
- Engine overheating prevention system

## HYDRAULIC SYSTEM

- Manual power boost
- Auto power boost
- Boom and arm regeneration circuits
- Pilot oil filter
- Load holding valve
- Pilot control shut-off lever
- Swing with anti-reverse function
- Control pattern changer valve
- Bi-directional piping to arm
- 2-joystick with multi buttons

## TELEMATICS

- 36 months service from initial sale
- Positioning and engine on/off history

## OPERATOR STATION

- Travel rear-view camera
- 3 hallogen work lights
- Pressurized and sealed cab with all around visibility
- Front window wiper
- Removable lower window
- 6-working mode selection system: Power Mode, Economy Mode, Fine Mode, Lifting Mode, Breaker Mode and Attachment Mode
- Skylight rooftop, w/ sliding sun visor
- Air conditioner, heater, defroster
- AM/FM Radio with MP3 audio jack
- Color LCD monitor with alarms, filter/fluid change, fuel rate, water temperature, work mode, fault code, working hour, seven language setting
- Glass-breaking hammer
- Fire extinguisher
- Cup holder
- Floor mat
- Storage box
- Rotation beacon
- Front glass lower guard
- Travel alarm
- Front window rain guard

## UPPER STRUCTURE

- Rear view mirror (right & left side)
- 2 batteries
- One key for all locks
- Fuel gauge
- Hydraulic oil level gauge
- Storage box
- Swing parking brake
- Boom working lights
- Light integrated into storage box
- Rollover Protective System (ROPS) Cab

## UNDERCARRIAGE

- 800 mm (31.5 in) triple grouser track-shoes
- 3 piece track-guard (each-side)
- Towing eye on base frame
- Sealed and lubricated track chain

## WORK EQUIPMENT

- 6.4 m (21 ft 0 in) boom
- 3.2 m (10 ft 6 in) arm
- 1.6 m<sup>3</sup> (2.09 yd<sup>3</sup>) bucket heavy duty

# OPTIONAL EQUIPMENT

## ENGINE SYSTEM

- Electrical fuel refilling pump

## HYDRAULIC SYSTEM

- Security valves (2 on boom and 1 on arm) Auxiliary Hydraulic options
- PTO rotating piping
- Hi pressure quick coupler piping

## OPERATOR STATION

- Power outlet 24V to 12V converter
- 3 LED working lights
- Air suspension seat
- Falling Object Protective Structure (FOPS)

## UNDERCARRIAGE

- 600, 700, 900 mm track-shoes with triple grousers

## FEATURES TO ENHANCE YOUR PRODUCTIVITY

- LED lights
- Attachment piping
- Auto lube system

## ARM

- 2.6 m (8 ft 6 in)

## COUNTERWEIGHT

- 7,700 kg (16,975 lb)



**LiuGong Construction Machinery N.A, LLC.**

22220 Merchants Way - Suite 100  
Katy, TX 77449  
USA

T: 281-579-8882 F: 281-579-8388  
[www.liugongna.com](http://www.liugongna.com)

Like and follow us:



**LG-PB-936E-012020-ENG-US**

The LiuGong series of logos herein, including but not limited to word marks, device marks, letter of alphabet marks and combination marks, as the registered trademarks of Guangxi LiuGong Group Co., Ltd. are used by Guangxi LiuGong Machinery Co., Ltd. with legal permission, and shall not be used without permission. Specifications and designs are subject to change without notice. Illustrations and pictures may include optional equipment and may not include all standard equipment. Equipment and options varies by regional availability.