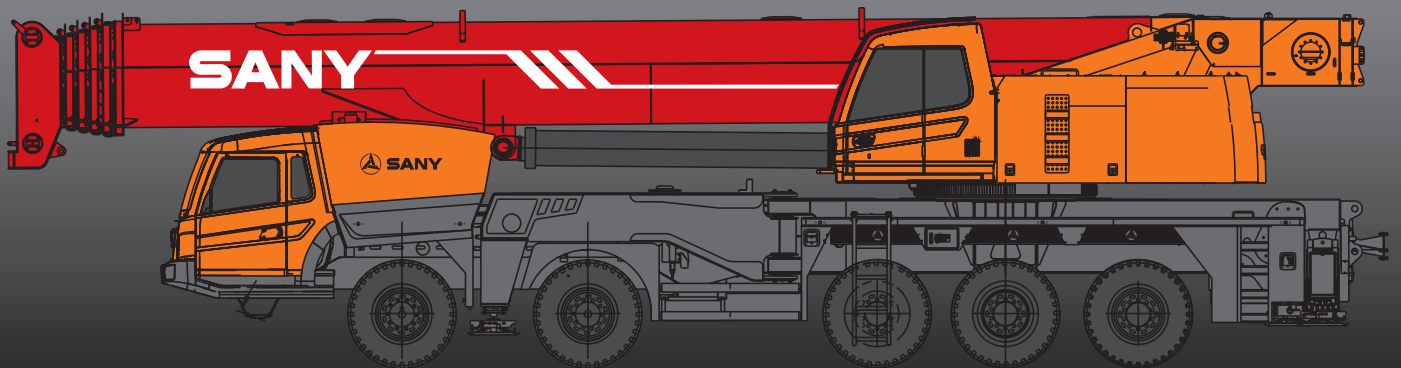


STC1600

STC1600 TRUCK CRANE
160 TONS LIFTING CAPACITY

Quality Changes the World



SANY

■ SANY Automobile Hoisting Machinery is one of the core business unit of Sany Heavy Industry, mainly engaged in the research and development of high end, mid to large tonnage crane series, including mobile crane, crawler crane, tower crane and loader crane. It has two industrial parks in Ningxiang and Huzhou, since entering the market, the products of Sany Automobile Hoisting Machinery have received worldwide recognition with advanced technology, lean manufacturing, high reliability and excellent service.





SANY TRUCK CRANE

CONTENT

| | |
|----|------------------------|
| 04 | Icon |
| 05 | Selling Points |
| 06 | Introduction |
| 09 | Dimension |
| 10 | Technical Parameter |
| 11 | Operation Condition |
| 12 | Load Chart |
| 40 | Wheel Crane Family Map |



Cab



Carrier frame



Suspension system



Hydraulic system



Outriggers



Telescopic boom



Control system



Engine



Lattice jibs



Telescopic system



Transmission system



Superlift devices



Luffing system



Drive/Steer



Luffing lattice jib



Slewing



Axles



winch mechanism:



Counterweight



Tyres



Safety system



Brakes system



Hoist system

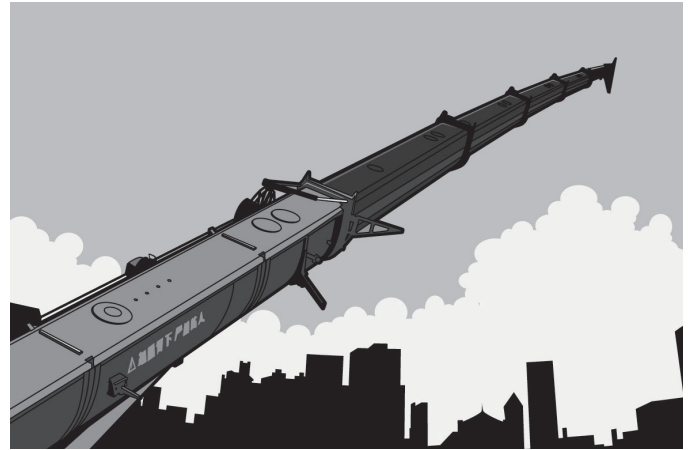


Electrical system



High-efficient and innovate chassis performance / chassis system

Newly creative 5-axle chassis is designed, with multiple braking brakes applied to ensure more reliable driving performance of chassis. Anti-tilting pre-warning technology is used, providing high stability and safety of the overall operation.



Safe and stable lifting performance / boom system

6-section boom is applied, with a total extended length of 62m, which leads the industry; fully optimized U-shaped large circular-section lifting boom of high-strength structural steel is used, to ensure more even stress and lighter weight, improving operation safety. The total jib length is 36m, claims the first in the industry; infinitely variable speed luffing is applied, with mounting angle of 0°, 20°, and 40°, to facilitate the change of operating condition, improving operation efficiency.



High-efficiency, energy-saving, and unique hydraulic control technology / hydraulic system

Self-developed dual pump conversing / dividing main valve is used, with higher conversing efficiency for single-action and good dividing controllability for combined-action of dual pump. Electro-proportional variable displacement piston pump is applied to ensure high-precision flow control, high efficiency and high energy-saving features.



Safe, stable, advanced and intelligent electronic control technology / electronic control system

Sany self-developed controller SYMC specially designed for engineering machinery, CAN bus full-digital network control technology and sufficient sensors are used, to ensure stable control signal, simple harness, and high reliability; timely data feedback facilitates the monitoring of the machine working state in real time; Load moment limiter equipping with comprehensive intelligent protective system is adopted, with accuracy controlled within $\pm 5\%$; comprehensive logic and interlock control is applied, to ensure more safe and reliable operation.

Superstructure

Cab

- Sany self-developed cab in accordance with ergonomic design is used, with safety glass and corrosion-resistant steel plate, full-covering soft interior, super-large internal space, panoramic sunroof, and user-friendly adjustable seats; air conditioning and electric wiper are configured, to provide more comfortable and easy operation. Load moment limiter display is adopted for the systematic combination of main console and operation display system, which clearly show the data of all operating conditions for lifting operation.

Hydraulic System

- Electro-proportional variable displacement piston pump is used to adjust the pump displacement in real time, achieving the high-precision flow control and greatly reducing energy loss;
- Innovative dual pump converging and dividing main valves are used to easily achieve the stable control of single action and combined action under all operating conditions;
- Electric proportional variable motor is used for main winch, to ensure high operation efficiency; max. speed of single lines of main and auxiliary winches can be up to 135m/min;
- Closed slewing system is used, with free slipping function applied, to ensure stable rotation and control, and excellent inching operation.

Control system

- CAN-bus instrument: CAN-bus instrument with a combined intelligent control electrical system is used for easy reading of the traveling parameters at any time. meanwhile, engine fault warning function is applied, to ensure convenient and fast troubleshooting;
- Outrigger automatic control system: Outrigger can be controlled electrically, with auto leveling control function configured for flexible and convenient operation.
- Comprehensive security protection system with 3-wraps protector, height limiter and angle limiter are configured for main and auxiliary winches, to prevent wire rope from over-hoisting and over-rolling out.
- Load moment limiter: High intelligent load moment limiter system is used, to fully protect lifting operation, providing accurate, stable and comfortable operation;
- Fault self-diagnosis system is used, to detect the failure of electrical and hydraulic devices of the superstructure, and engine and gearbox of the undercarriage. In case of failure of crane, guidance will be provided for troubleshooting to ensure reliable operation of the crane.

Luffing system

- Deadweight lowering system is used with lowering compensation control applied. Lowering speed can be controlled for lifting of intermediate and long boom, to ensure lifting safety.
- Luffing angle is $-0.5^{\circ} \sim 82^{\circ}$.

Telescopic boom

- Single-cylinder pin technology is used, to achieve the pull-in and pull-out actions of the cylinder pin and boom pin through the electro-hydraulic control system;
- Telescopic action of the lifting boom can be applied through a single telescopic cylinder, with multi-stage pressure control applied. The use of multiple telescopic balance valves and mechanical and hydraulic interlock mechanism of cylinder pin and boom pin ensures safe and reliable operation of the telescopic system.
- 6-section boom made of high-strength welding structural steel, with U-shaped cross section applied. Length of basic boom is 13.4m, of fully-extended boom is 62m; jib length is 36m; lifting height of fully-extended boom is 62m; max. lifting height including jib is 98m.

Slewing system

- 360° rotation is applied, with max. slewing speed of 1.6r/min; electro-proportional closed double-slewing system is used, to ensure good operation and more stable rotation.

Superstructure



Hoisting Mechanism

- Pump and motor dual variable speed regulation is applied, which is highly efficient and energy-saving. The perfect combination of winch balance valve and unique anti-slip hook technology is applied, to ensure stable lifting and lowering operation of the load.
- Normally-closed winch brake is used, with winch balance valve configured, to prevent stalling of the hook;
- Main hoist wire rope: Wire rope,35W×7-Φ22 280m; auxiliary hoist wire rope: Wire rope,35W×7-Φ22 210m;



Safety Device

- Load Moment Limiter: Coordinate system is introduced to establish a simple and accurate model to measure the lifting load, improving the integrated precision of load moment limiter system. The use of on-line empty-load calibration can solve the inaccurate problem of lifting load due to deviation of dimensional parameters of lifting boom, thus improving the system accuracy, with accuracy of load moment limiter system up to $\pm 5\%$.
- Hydraulic system is configured with hydraulic balance valve, relief valve, and two-way hydraulic lock etc., achieving stable and reliable operation of hydraulic system;
- Main and auxiliary winches are equipped with 3-wrap protector, to prevent wire rope from over-rolling out;
- Boom and jib are configured with height limiter, to prevent wire rope from over-hoisting;
- Anemometer is equipped at boom end, to detect whether the high-altitude wind speed exceeds the available operating range.
- Length and angle sensors and pressure sensor are configured, to display the operation state of the crane in real time and to cut off the dangerous action automatically, with an alarm given from the buzzer.



Counterweight

- 60t movable counterweight
- There are Six-counterweight combination of 10t, 19t, 28t, 37t, 46t, and 60t, to ensure fast and convenient installation;
- Slewing radius is 4910mm.

Undercarriage



Cab

- Sany self-developed new steel cab is used, featuring with good shock resistance and sealing, with both side open door, mechanical suspension driving seat, adjustable steering wheel, large-vision rearview mirror, comfort driver's seat with headrest, fog fan, air conditioning, and stereo radio equipped, and a complete set of control instrument and meters to ensure more comfortable and safe operation.



Frame

- It is of a Sany self-designed and manufactured box-type structure welded by high-strength steel plate, featuring with lighter weight and greater bearing capacity, with flexural strength increased by 46.8% and torsional strength increased by 68% compared to the original structure.



Axles

- Third, fourth, and fifth axles are as drive shaft and first, second, and fifth axles are as steering shaft; third and fourth axles are equipped with axial and inter-wheel differential inside, and fifth axle is equipped with inter-wheel differential; welding-type axle housing is used, to provide bearing capacity.

Undercarriage



Outrigger

- Arrangement of front-swing outrigger and rear telescopic outriggers is applied. They are made of high-strength steel plate, which are controlled by control panel, featuring with automatically leveling function, to ensure flexible operation. Four-point support is applied, with longitudinal and horizontal spans of 7.8m×8.0m applied, to ensure easy operation and high stability.



Transmission System

- Gearbox: Manual / Auto gearbox is used, with twelve forward gears and two reverse gears, to provide a large speed ratio range, which can not only meet the requirement of climbing at low speed but also travel at high speed, with automatic cruise function.
- Drive shaft: Optimized arrangement of drive shaft is applied, to ensure stable and reliable transmission of drive shaft. For most optimized power transmission, end tooth coupling shaft is used, to provide larger transmission torque.



Braking System

- Braking system includes traveling brake, parking brake, emergency brake, and auxiliary brake.
- Traveling brake adopts double-circuit braking system, with air servo brakes and drum brakes used for all wheels.
- Parking brake will be acted on the third to fifth axle through spring air chamber;
- For emergency brake, air supply shall be cut off by stored energy of spring for emergency stop;
- Auxiliary brake consists of engine brake and exhaust brake, with dual brake applied for engine, to ensure traveling safety and reliability.



Suspension System

- All axle suspensions adopt plate spring suspension systems; plate spring has been passed more than 100,000 times fatigue tests, with performance parameters of front and rear plate springs optimized, to ensure strength and comfort riding.



Steering System

- Single-circuit hydraulic power steering system equipping with mechanical steering limit is used, and emergency steering device having emergency pump drive is equipped.



Drive / Swing

- 10×6×6



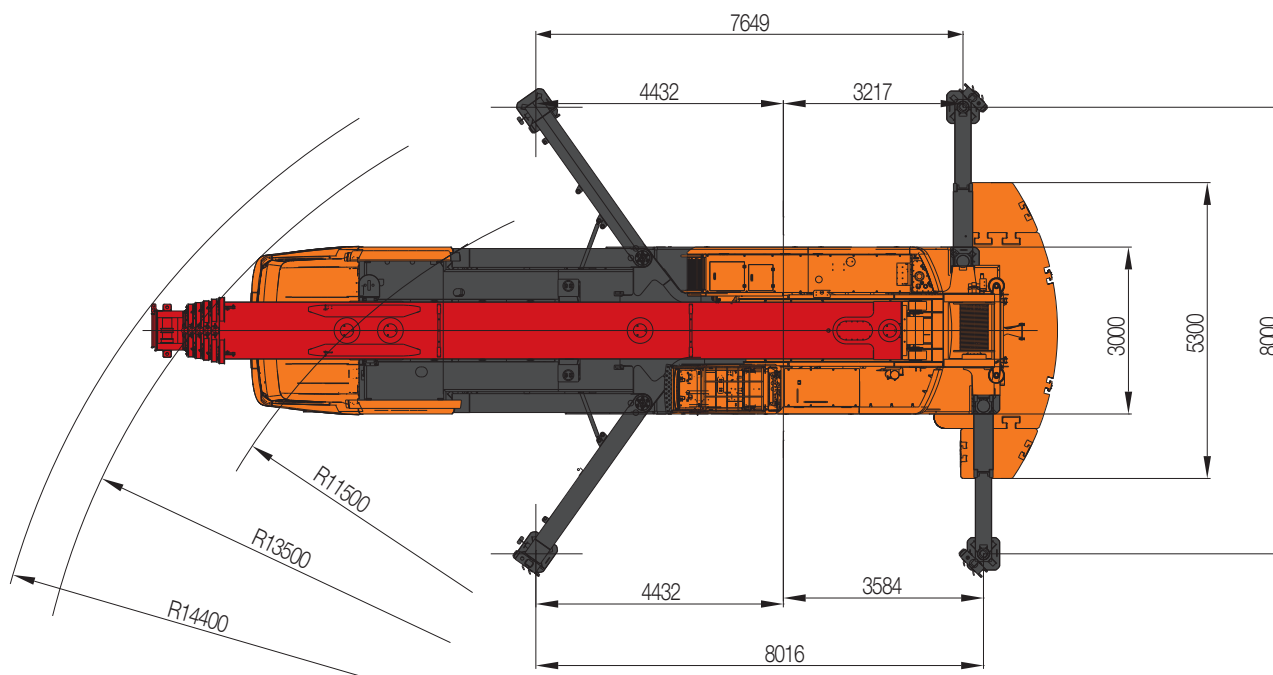
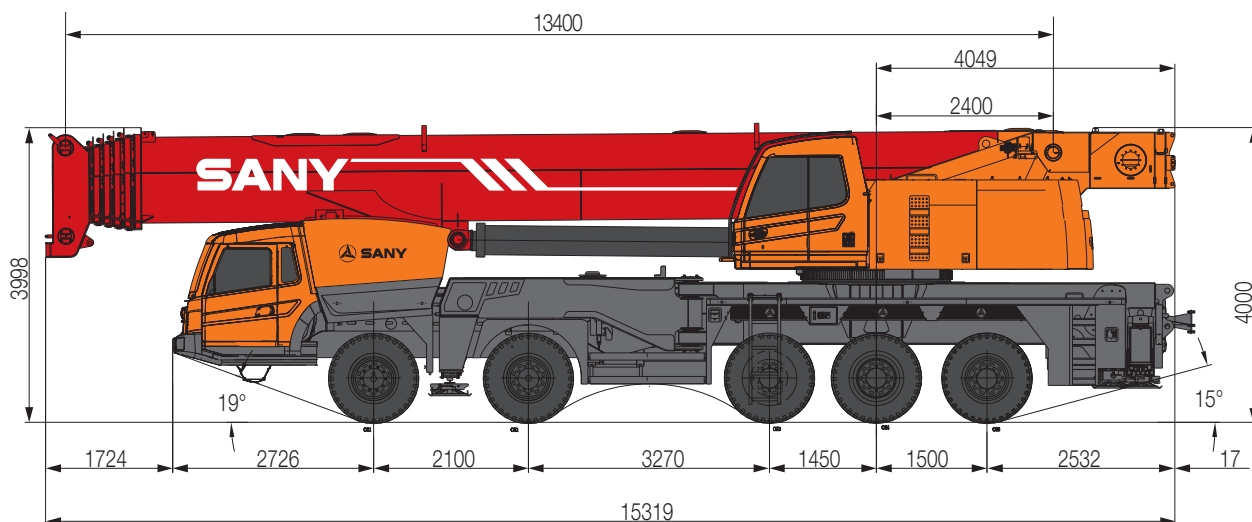
Tires

- 12.00R24-20PR /14.00R20-20PR



Electrical system

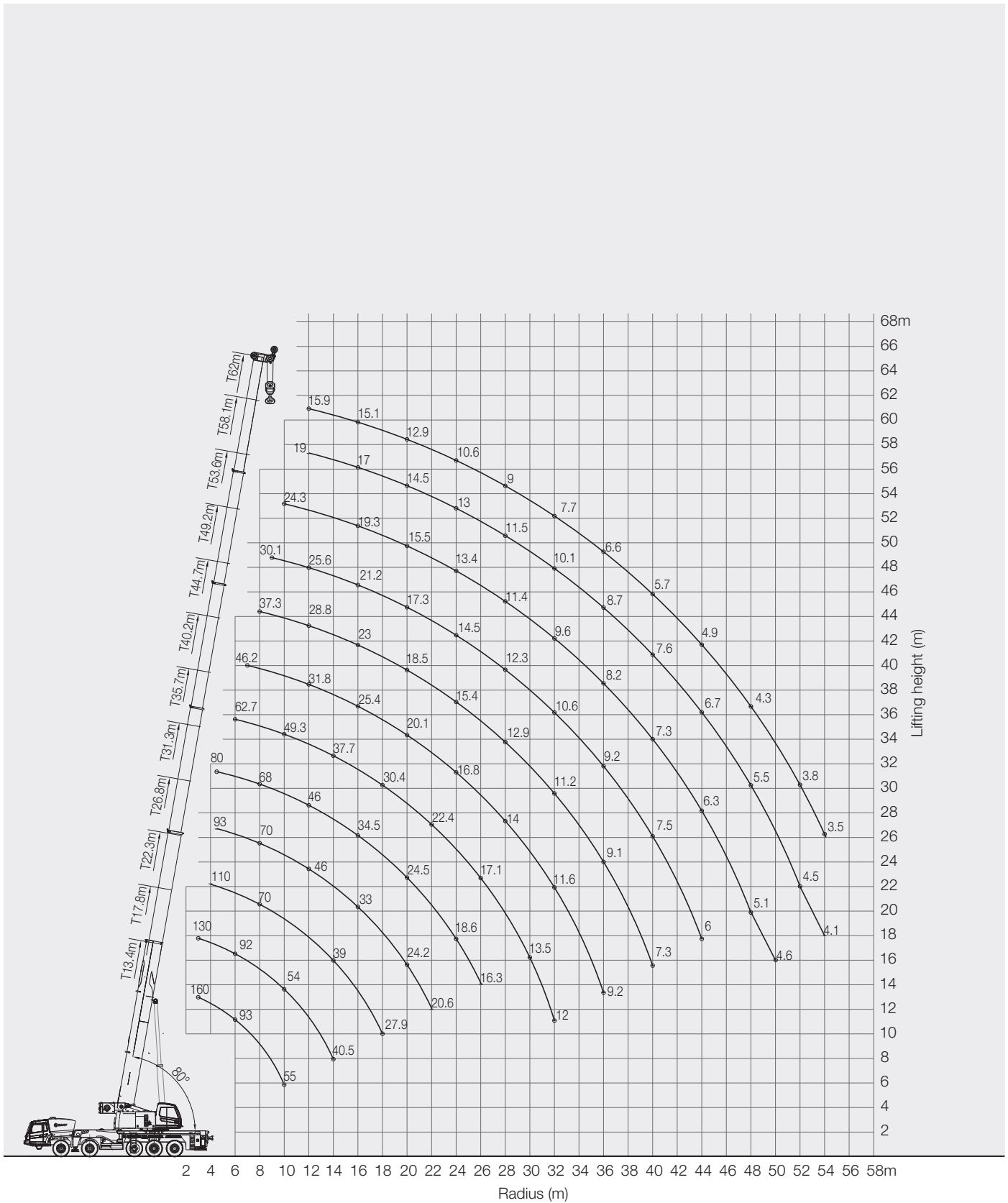
- 2 × 12V maintenance-free batteries are used, with mechanical power master switch configured, to manually cut off the machine power; bus control system is used, to achieve information interaction between superstructure and undercarriage.



STC1600 TRUCK CRANE
TECHNICAL PARAMETER

| Type | Item | Parameter | |
|---|--|---------------------------------|---------------------|
| Capacity | Max. lifting capacity | 160t | |
| Dimensions | Overall length | 15319 mm | |
| | Overall width | 3000 mm | |
| | Overall height | 4000 mm | |
| | Axle distance | Axle-1,2 | 2100 mm |
| | | Axle-2,3 | 3270 mm |
| Axle-3,4 | | 1450 mm | |
| Axle-4,5 | | 1500 mm | |
| Weight | Overall weight | 55000 kg | |
| | Axle load | Axle load-1,2 | 10000/10000 kg |
| | | Axle load-3,4,5 | 13000/13000/9000 kg |
| Traveling | Max.traveling speed | 80 km/h | |
| | Turning radius | Min.turning radius | 11.5 m |
| | | Min.turning radius of boom head | 14.4 m |
| | Wheel formula | 10×6 ×6 | |
| | Min.ground clearance | 310 mm | |
| | approach angle | 19 ° | |
| | Departure angle | 15 ° | |
| | Max.gradeability | 40% | |
| Fuel consumption per 100km | ≤ 78 L | | |
| Main Performance Data | Temperature range | - 0.5 °C ~+ 82 °C | |
| | Min.rated range | 3 m | |
| | Tail slewing radius of swingtable | 4.91m | |
| | Boom section | 6 | |
| | boom shape | U-shaped | |
| | Max.lifting moment | Base boom | 6000 kN·m |
| | | Full-extend boom | 2580 kN·m |
| | | Full-extend boom+jib | 1827kN·m |
| | Boom length | Base boom | 13.4 m |
| | | Full-extend boom | 62 m |
| Full-extend boom+jib | | 98 m | |
| Outrigger span (Longitudinal×Transversal) | 7.8 × 8.0 m | | |
| Jib offset | 0 °, 20 °, 40 ° | | |
| Working speed | Max.single rope lifting speed of main winch (no load) | 135 m/min | |
| | Max.single rope lifting speed of auxiliary winch (no load) | 135 m/min | |
| | Full extension/retraction time of boom | 500 / s | |
| | Full lifting/descending time of boom | 60 /s | |
| | Slewing speed | 1.6 r/min | |
| Aircondition | Aircondition in up cab | Cooling/Heating | |
| | Aircondition in low cab | Cooling/Heating | |

STC1600 Working Ranges



**STC1600 TRUCK CRANE
LOAD CHART**
Prerequisites:

- ① Boom operation conditions (fully extended boom length), min length is 13.4m and max. length is 62m.
- ② The span of outriggers is 7.8x8.0m.
- ③ 360° working condition is applied.
- ④ Counterweight is 60T.

| Range (m) | Main boom | | | | | | | | | | | | | | Range (m) |
|-----------------|-----------|-------|-------|------|-------|-------|------|------|------|------|------|------|------|------|-----------------|
| | 13.4 | 17.8 | 17.8 | 17.8 | 22.3 | 22.3 | 22.3 | 26.8 | 26.8 | 26.8 | 31.3 | 31.3 | 31.3 | 35.7 | |
| 3 | 160.0 | | | | | | | | | | | | | | 3 |
| 3.5 | 140.0 | 130.0 | 130.0 | 63.7 | | | | | | | | | | | 3.5 |
| 4 | 125.0 | 122.0 | 120.0 | 59.7 | 110.0 | 103.3 | 69.8 | | | | | | | | 4 |
| 4.5 | 115.0 | 115.0 | 113.0 | 56.9 | 110.0 | 98.2 | 66 | 93.0 | 65.1 | 62.3 | | | | | 4.5 |
| 5 | 105.0 | 104.0 | 105.0 | 54.3 | 103.0 | 95.5 | 62.9 | 93.0 | 61.0 | 59.3 | 67.0 | 80.0 | 70.0 | | 5 |
| 6 | 93.0 | 91.0 | 92.0 | 49.2 | 90.0 | 83.8 | 58 | 89.0 | 57.3 | 57.7 | 64.6 | 80.0 | 62.4 | 63.5 | 6 |
| 7 | 80.0 | 79.5 | 79.0 | 45.3 | 79.0 | 74.2 | 52.5 | 78.0 | 50.1 | 51.4 | 56.8 | 73.0 | 56.2 | 56.6 | 7 |
| 8 | 75.0 | 73.2 | 72.0 | 41.8 | 70.0 | 65.3 | 47.6 | 70.0 | 43.8 | 44.9 | 50.4 | 68.0 | 51.7 | 51.7 | 8 |
| 9 | 64.0 | 63.5 | 63.0 | 39.2 | 62.0 | 57.3 | 43.9 | 61.5 | 39.7 | 40.7 | 45.2 | 60.0 | 48.0 | 46.9 | 9 |
| 10 | 55.0 | 54.5 | 54.0 | 36.4 | 54.0 | 53.0 | 40.5 | 54.0 | 36.0 | 37.6 | 40.5 | 53.0 | 44.5 | 43.2 | 10 |
| 12 | | 46.9 | 47.7 | 32.5 | 46.0 | 46.5 | 35 | 46.0 | 27.9 | 28.8 | 38.0 | 46.0 | 37.2 | 36.7 | 12 |
| 14 | | 39.6 | 40.5 | 29.6 | 39.0 | 39.5 | 31.3 | 39.0 | 26.3 | 25.4 | 34.0 | 39.0 | 35.0 | 31.7 | 14 |
| 16 | | | | | 33.8 | 35.2 | 27.8 | 33.0 | 25.1 | 24.0 | 29.7 | 34.5 | 33.2 | 27.8 | 16 |
| 18 | | | | | 27.9 | 29.2 | 24.8 | 27.5 | 24.7 | 23.1 | 26.5 | 28.5 | 29.0 | 24.7 | 18 |
| 20 | | | | | | | | 24.2 | 22.0 | 21.8 | 23.6 | 24.5 | 26.6 | 22.0 | 20 |
| 22 | | | | | | | | 20.6 | 19.9 | 21.1 | 20.7 | 21.5 | 23.0 | 20.0 | 22 |
| 24 | | | | | | | | | | | 17.9 | 18.6 | 20.1 | 18.1 | 24 |
| 26 | | | | | | | | | | | 15.5 | 16.3 | 17.7 | 15.8 | 26 |
| 28 | | | | | | | | | | | | | | 13.9 | 28 |
| 30 | | | | | | | | | | | | | | 12.2 | 30 |
| 32 | | | | | | | | | | | | | | 10.8 | 32 |
| 34 | | | | | | | | | | | | | | | 34 |
| 36 | | | | | | | | | | | | | | | 36 |
| 38 | | | | | | | | | | | | | | | 38 |
| 40 | | | | | | | | | | | | | | | 40 |
| 42 | | | | | | | | | | | | | | | 42 |
| 44 | | | | | | | | | | | | | | | 44 |
| 46 | | | | | | | | | | | | | | | 46 |
| 48 | | | | | | | | | | | | | | | 48 |
| 50 | | | | | | | | | | | | | | | 50 |
| 52 | | | | | | | | | | | | | | | 52 |
| 54 | | | | | | | | | | | | | | | 54 |
| 56 | | | | | | | | | | | | | | | 56 |
| 58 | | | | | | | | | | | | | | | 58 |
| 60 | | | | | | | | | | | | | | | 60 |
| 62 | | | | | | | | | | | | | | | 62 |
| 64 | | | | | | | | | | | | | | | 64 |
| 66 | | | | | | | | | | | | | | | 66 |
| Number of lines | 14 | 12 | 12 | 12 | 9 | 9 | 9 | 8 | 8 | 8 | 6 | 6 | 6 | 5 | Number of lines |
| II | 0 | 46 | 0 | 0 | 46 | 0 | 0 | 46 | 0 | 0 | 46 | 46 | 0 | 92 | II |
| III | 0 | 0 | 46 | 0 | 46 | 46 | 0 | 46 | 92 | 0 | 92 | 46 | 46 | 46 | III |
| IV | 0 | 0 | 0 | 0 | 0 | 46 | 0 | 46 | 46 | 46 | 46 | 46 | 46 | 46 | IV |
| V | 0 | 0 | 0 | 0 | 0 | 0 | 46 | 0 | 0 | 46 | 0 | 46 | 46 | 46 | V |
| VI | 0 | 0 | 0 | 46 | 0 | 0 | 46 | 0 | 0 | 46 | 0 | 0 | 46 | 0 | VI |

Prerequisites:

- ① Boom operation conditions (fully extended boom length), min length is 13.4m and max. length is 62m.
- ② The span of outriggers is 7.8x8.0m.
- ③ 360° working condition is applied.
- ④ Counterweight is 60T.

| Range (m) | Main boom | | | | | | | | | | | | | | | Range (m) |
|-----------------|-----------|------|------|------|------|------|------|------|------|------|------|------|------|------|------|-----------------|
| | 35.7 | 35.7 | 40.2 | 40.2 | 40.2 | 44.7 | 44.7 | 44.7 | 49.2 | 49.2 | 49.2 | 53.6 | 53.6 | 58.1 | 62 | |
| 3 | | | | | | | | | | | | | | | | 3 |
| 3.5 | | | | | | | | | | | | | | | | 3.5 |
| 4 | | | | | | | | | | | | | | | | 4 |
| 4.5 | | | | | | | | | | | | | | | | 4.5 |
| 5 | | | | | | | | | | | | | | | | 5 |
| 6 | 62.7 | 47.9 | | | | | | | | | | | | | | 6 |
| 7 | 60.2 | 43.4 | 46.2 | 43.1 | 39.7 | | | | | | | | | | | 7 |
| 8 | 56.1 | 39.3 | 42.6 | 39.7 | 37.3 | 37.3 | 33.6 | 29.3 | | | | | | | | 8 |
| 9 | 52.2 | 36.3 | 39.3 | 36.9 | 34.9 | 34.9 | 31.5 | 27.5 | 30.1 | 26.2 | 23.3 | | | | | 9 |
| 10 | 49.3 | 33.4 | 36.8 | 34.3 | 32.7 | 32.7 | 29.5 | 25.8 | 28.4 | 24.9 | 21.9 | 24.3 | 21.0 | | | 10 |
| 12 | 42.2 | 28.9 | 31.8 | 30.2 | 29.3 | 28.8 | 25.9 | 22.8 | 25.6 | 22.3 | 19.5 | 22.5 | 19.0 | 19.0 | 15.9 | 12 |
| 14 | 37.7 | 25.4 | 28.5 | 26.5 | 26.1 | 26.0 | 23.2 | 20.6 | 23.5 | 20.1 | 17.7 | 21.5 | 17.1 | 18.0 | 15.9 | 14 |
| 16 | 33.6 | 22.2 | 25.4 | 23.6 | 23.7 | 23.0 | 21.0 | 18.6 | 21.2 | 18.2 | 16.1 | 19.3 | 15.7 | 17.0 | 15.1 | 16 |
| 18 | 30.4 | 19.8 | 22.6 | 21.4 | 21.5 | 20.4 | 18.7 | 16.9 | 19.2 | 16.5 | 14.6 | 17.0 | 14.5 | 15.5 | 14.2 | 18 |
| 20 | 25.9 | 17.9 | 20.1 | 19.1 | 19.8 | 18.5 | 17.3 | 15.3 | 17.3 | 15.2 | 13.2 | 15.5 | 13.3 | 14.5 | 12.9 | 20 |
| 22 | 22.4 | 16.2 | 18.2 | 17.3 | 18.3 | 17.0 | 15.6 | 14.1 | 15.7 | 14.0 | 12.2 | 14.5 | 12.3 | 13.8 | 11.7 | 22 |
| 24 | 19.5 | 14.7 | 16.8 | 15.9 | 16.8 | 15.4 | 14.4 | 13.0 | 14.5 | 12.9 | 11.2 | 13.4 | 11.3 | 13.0 | 10.6 | 24 |
| 26 | 17.1 | 13.6 | 15.8 | 14.7 | 15.5 | 14.2 | 13.1 | 12.0 | 13.3 | 11.9 | 10.3 | 12.3 | 10.4 | 12.2 | 9.8 | 26 |
| 28 | 15.2 | 12.5 | 14.0 | 13.3 | 14.5 | 12.9 | 12.0 | 11.1 | 12.3 | 11.0 | 9.7 | 11.4 | 9.8 | 11.5 | 9.0 | 28 |
| 30 | 13.5 | 11.5 | 12.9 | 12.5 | 13.6 | 12.4 | 11.3 | 10.4 | 11.3 | 10.1 | 8.9 | 10.5 | 9.2 | 10.7 | 8.3 | 30 |
| 32 | 12.0 | 10.4 | 11.6 | 11.5 | 12.7 | 11.2 | 10.4 | 9.6 | 10.6 | 9.5 | 8.2 | 9.8 | 8.5 | 10.1 | 7.7 | 32 |
| 34 | | | 10.3 | 10.6 | 11.4 | 10.2 | 9.6 | 9.0 | 9.8 | 8.8 | 7.7 | 8.1 | 7.9 | 9.4 | 7.1 | 34 |
| 36 | | | 9.2 | 9.5 | 10.3 | 9.1 | 9.0 | 8.4 | 9.2 | 8.2 | 7.2 | 8.7 | 7.4 | 8.7 | 6.6 | 36 |
| 38 | | | | | | 8.2 | 8.3 | 7.9 | 8.4 | 7.6 | 6.8 | 8.3 | 7.0 | 8.2 | 6.1 | 38 |
| 40 | | | | | | 7.3 | 7.5 | 7.2 | 7.5 | 7.1 | 6.3 | 7.7 | 6.5 | 7.6 | 5.7 | 40 |
| 42 | | | | | | | | | 6.7 | 6.6 | 5.9 | 7.0 | 6.1 | 7.1 | 5.3 | 42 |
| 44 | | | | | | | | | 6.0 | 6.0 | 5.4 | 6.3 | 5.7 | 6.7 | 4.9 | 44 |
| 46 | | | | | | | | | | | | 5.7 | 5.4 | 6.1 | 4.6 | 46 |
| 48 | | | | | | | | | | | | 5.1 | 5.0 | 5.5 | 4.3 | 48 |
| 50 | | | | | | | | | | | | 4.6 | 4.5 | 5.0 | 4.0 | 50 |
| 52 | | | | | | | | | | | | | | 4.5 | 3.8 | 52 |
| 54 | | | | | | | | | | | | | | 4.1 | 3.5 | 54 |
| 56 | | | | | | | | | | | | | | | | 56 |
| 58 | | | | | | | | | | | | | | | | 58 |
| 60 | | | | | | | | | | | | | | | | 60 |
| 62 | | | | | | | | | | | | | | | | 62 |
| 64 | | | | | | | | | | | | | | | | 64 |
| 66 | | | | | | | | | | | | | | | | 66 |
| Number of lines | 4 | 4 | 4 | 4 | 4 | 3 | 3 | 3 | 3 | 3 | 3 | 3 | 3 | 2 | 2 | Number of lines |
| II | 46 | 0 | 92 | 46 | 46 | 92 | 46 | 46 | 92 | 46 | 46 | 92 | 46 | 92 | 100 | II |
| III | 46 | 92 | 46 | 92 | 46 | 92 | 92 | 46 | 92 | 92 | 46 | 92 | 92 | 92 | 100 | III |
| IV | 46 | 46 | 46 | 46 | 46 | 46 | 92 | 46 | 92 | 92 | 92 | 92 | 92 | 92 | 100 | IV |
| V | 46 | 46 | 46 | 46 | 46 | 46 | 46 | 92 | 46 | 92 | 92 | 92 | 92 | 92 | 100 | V |
| VI | 46 | 46 | 46 | 46 | 92 | 46 | 46 | 92 | 46 | 46 | 92 | 46 | 92 | 92 | 100 | VI |

**STC1600 TRUCK CRANE
LOAD CHART**
Prerequisites:

- ① Boom operation conditions (fully extended boom length), min length is 13.4m and max. length is 62m.
- ② The span of outriggers is 7.8x8.0m.
- ③ 360° working condition is applied.
- ④ Counterweight is 46T.

| Range (m) | Main boom | | | | | | | | | | | | | | Range (m) |
|-----------------|-----------|-------|-------|------|-------|-------|------|------|------|------|------|------|------|------|-----------------|
| | 13.4 | 17.8 | 17.8 | 17.8 | 22.3 | 22.3 | 22.3 | 26.8 | 26.8 | 26.8 | 31.3 | 31.3 | 31.3 | 35.7 | |
| 3 | 160.0 | | | | | | | | | | | | | | 3 |
| 3.5 | 140.0 | 130.0 | 130.0 | 63.7 | | | | | | | | | | | 3.5 |
| 4 | 125.0 | 122.0 | 120.0 | 59.7 | 110.0 | 103.3 | 69.8 | | | | | | | | 4 |
| 4.5 | 115.0 | 115.0 | 113.0 | 56.9 | 110.0 | 98.2 | 66.0 | 93.0 | 65.1 | 62.3 | | | | | 4.5 |
| 5 | 105.0 | 104.0 | 105.0 | 54.3 | 103.0 | 95.5 | 62.9 | 93.0 | 61.0 | 59.3 | 67.0 | 80.0 | 70.0 | | 5 |
| 6 | 93.0 | 91.0 | 92.0 | 49.2 | 90.0 | 83.8 | 58.0 | 89.0 | 57.3 | 57.7 | 64.6 | 80.0 | 62.4 | 63.5 | 6 |
| 7 | 80.0 | 79.5 | 79.0 | 45.3 | 79.0 | 74.2 | 52.5 | 78.0 | 50.1 | 51.4 | 56.8 | 73.0 | 56.2 | 56.6 | 7 |
| 8 | 75.0 | 73.2 | 72.0 | 41.8 | 70.0 | 65.3 | 47.6 | 70.0 | 43.8 | 44.9 | 50.4 | 68.0 | 51.7 | 51.7 | 8 |
| 9 | 64.0 | 63.5 | 63.0 | 39.2 | 62.0 | 57.3 | 43.9 | 61.5 | 39.7 | 40.7 | 45.2 | 60.0 | 48.0 | 46.9 | 9 |
| 10 | 55.0 | 54.5 | 54.0 | 36.4 | 54.0 | 53.0 | 40.5 | 54.0 | 36.0 | 37.6 | 40.5 | 53.0 | 44.5 | 43.2 | 10 |
| 12 | | 44.0 | 45.0 | 32.5 | 44.4 | 45.9 | 35.0 | 45.2 | 27.9 | 28.8 | 38.0 | 46.0 | 37.2 | 36.7 | 12 |
| 14 | | 33.9 | 34.8 | 29.6 | 34.3 | 35.7 | 31.3 | 35.1 | 26.3 | 25.4 | 34.0 | 36.0 | 35.0 | 31.7 | 14 |
| 16 | | | | | 27.4 | 28.7 | 27.8 | 28.1 | 25.1 | 24.0 | 28.2 | 29.0 | 30.7 | 27.8 | 16 |
| 18 | | | | | 22.4 | 23.7 | 24.8 | 23.1 | 23.7 | 23.1 | 23.2 | 24.0 | 25.6 | 23.5 | 18 |
| 20 | | | | | | | | 19.3 | 19.8 | 21.8 | 19.4 | 20.1 | 21.7 | 19.7 | 20 |
| 22 | | | | | | | | 16.3 | 16.8 | 18.9 | 16.4 | 17.1 | 18.6 | 16.7 | 22 |
| 24 | | | | | | | | | | | 13.9 | 14.7 | 16.2 | 14.2 | 24 |
| 26 | | | | | | | | | | | 11.9 | 12.7 | 14.1 | 12.3 | 26 |
| 28 | | | | | | | | | | | | | | 10.6 | 28 |
| 30 | | | | | | | | | | | | | | 9.2 | 30 |
| 32 | | | | | | | | | | | | | | 7.9 | 32 |
| 34 | | | | | | | | | | | | | | | 34 |
| 36 | | | | | | | | | | | | | | | 36 |
| 38 | | | | | | | | | | | | | | | 38 |
| 40 | | | | | | | | | | | | | | | 40 |
| 42 | | | | | | | | | | | | | | | 42 |
| 44 | | | | | | | | | | | | | | | 44 |
| 46 | | | | | | | | | | | | | | | 46 |
| 48 | | | | | | | | | | | | | | | 48 |
| 50 | | | | | | | | | | | | | | | 50 |
| 52 | | | | | | | | | | | | | | | 52 |
| 54 | | | | | | | | | | | | | | | 54 |
| 56 | | | | | | | | | | | | | | | 56 |
| 58 | | | | | | | | | | | | | | | 58 |
| 60 | | | | | | | | | | | | | | | 60 |
| 62 | | | | | | | | | | | | | | | 62 |
| 64 | | | | | | | | | | | | | | | 64 |
| 66 | | | | | | | | | | | | | | | 66 |
| Number of lines | 14 | 12 | 12 | 12 | 9 | 9 | 9 | 8 | 8 | 8 | 6 | 6 | 6 | 5 | Number of lines |
| II | 0 | 46 | 0 | 0 | 46 | 0 | 0 | 46 | 0 | 0 | 46 | 46 | 0 | 92 | II |
| III | 0 | 0 | 46 | 0 | 46 | 46 | 0 | 46 | 92 | 0 | 92 | 46 | 46 | 46 | III |
| IV | 0 | 0 | 0 | 0 | 0 | 46 | 0 | 46 | 46 | 46 | 46 | 46 | 46 | 46 | IV |
| V | 0 | 0 | 0 | 0 | 0 | 0 | 46 | 0 | 0 | 46 | 0 | 46 | 46 | 46 | V |
| VI | 0 | 0 | 0 | 46 | 0 | 0 | 46 | 0 | 0 | 46 | 0 | 0 | 46 | 0 | VI |

Prerequisites:

- ① Boom operation conditions (fully extended boom length), min length is 13.4m and max. length is 62m.
- ② The span of outriggers is 7.8x8.0m.
- ③ 360° working condition is applied.
- ④ Counterweight is 46T.

| Range (m) | Main boom | | | | | | | | | | | | | | | Range (m) |
|-----------------|-----------|------|------|------|------|------|------|------|------|------|------|------|------|------|------|-----------------|
| | 35.7 | 35.7 | 40.2 | 40.2 | 40.2 | 44.7 | 44.7 | 44.7 | 49.2 | 49.2 | 49.2 | 53.6 | 53.6 | 58.1 | 62 | |
| 3 | | | | | | | | | | | | | | | | 3 |
| 3.5 | | | | | | | | | | | | | | | | 3.5 |
| 4 | | | | | | | | | | | | | | | | 4 |
| 4.5 | | | | | | | | | | | | | | | | 4.5 |
| 5 | | | | | | | | | | | | | | | | 5 |
| 6 | 62.7 | 47.9 | | | | | | | | | | | | | | 6 |
| 7 | 60.2 | 43.4 | 46.2 | 43.1 | 39.7 | | | | | | | | | | | 7 |
| 8 | 56.1 | 39.3 | 42.6 | 39.7 | 37.3 | 37.3 | 33.6 | 29.3 | | | | | | | | 8 |
| 9 | 52.2 | 36.3 | 39.3 | 36.9 | 34.9 | 34.9 | 31.5 | 27.5 | 30.1 | 26.2 | 23.3 | | | | | 9 |
| 10 | 49.3 | 33.4 | 36.8 | 34.3 | 32.7 | 32.7 | 29.5 | 25.8 | 28.4 | 24.9 | 21.9 | 24.3 | 21.0 | | | 10 |
| 12 | 42.2 | 28.9 | 31.8 | 30.2 | 29.3 | 28.8 | 25.9 | 22.8 | 25.6 | 22.3 | 19.5 | 22.5 | 19.0 | 19.0 | 15.9 | 12 |
| 14 | 37.0 | 25.4 | 28.5 | 26.5 | 26.1 | 26.0 | 23.2 | 20.6 | 23.5 | 20.1 | 17.7 | 21.5 | 17.1 | 18.0 | 15.9 | 14 |
| 16 | 30.0 | 22.2 | 25.4 | 23.6 | 23.7 | 23.0 | 21.0 | 18.6 | 21.2 | 18.2 | 16.1 | 19.3 | 15.7 | 17.0 | 15.1 | 16 |
| 18 | 24.9 | 19.8 | 22.6 | 21.4 | 21.5 | 20.4 | 18.7 | 16.9 | 19.2 | 16.5 | 14.6 | 17.0 | 14.5 | 15.5 | 14.2 | 18 |
| 20 | 21.0 | 17.9 | 20.1 | 19.1 | 19.8 | 18.5 | 17.3 | 15.3 | 17.3 | 15.2 | 13.2 | 15.5 | 13.3 | 14.5 | 12.9 | 20 |
| 22 | 18.0 | 16.2 | 17.5 | 17.3 | 18.3 | 17.0 | 15.6 | 14.1 | 15.7 | 14.0 | 12.2 | 14.5 | 12.3 | 13.8 | 11.7 | 22 |
| 24 | 15.6 | 14.7 | 15.1 | 15.4 | 16.2 | 15.0 | 14.4 | 13.0 | 14.5 | 12.9 | 11.2 | 13.4 | 11.3 | 13.0 | 10.6 | 24 |
| 26 | 13.5 | 13.6 | 13.1 | 13.4 | 14.2 | 13.0 | 13.1 | 12.0 | 13.2 | 11.9 | 10.3 | 12.3 | 10.4 | 12.2 | 9.8 | 26 |
| 28 | 11.9 | 12.2 | 11.4 | 11.7 | 12.5 | 11.3 | 11.9 | 11.1 | 11.5 | 11.0 | 9.7 | 11.4 | 9.8 | 11.5 | 9.0 | 28 |
| 30 | 10.4 | 10.8 | 10.0 | 10.3 | 11.1 | 9.9 | 10.5 | 10.4 | 10.1 | 10.1 | 8.9 | 10.4 | 9.2 | 10.7 | 8.3 | 30 |
| 32 | 9.2 | 9.6 | 8.7 | 9.1 | 9.8 | 8.7 | 9.2 | 9.6 | 8.8 | 9.5 | 8.2 | 9.2 | 8.5 | 9.6 | 7.7 | 32 |
| 34 | | | 7.7 | 8.0 | 8.8 | 7.6 | 8.1 | 9.0 | 7.8 | 8.5 | 7.7 | 8.1 | 7.9 | 8.5 | 7.1 | 34 |
| 36 | | | 6.7 | 7.0 | 7.8 | 6.7 | 7.2 | 8.1 | 6.8 | 7.5 | 7.2 | 7.2 | 7.4 | 7.6 | 6.6 | 36 |
| 38 | | | | | | 5.8 | 6.4 | 7.3 | 6.0 | 6.7 | 6.8 | 6.3 | 7.0 | 6.8 | 6.1 | 38 |
| 40 | | | | | | 5.1 | 5.6 | 6.5 | 5.3 | 6.0 | 6.3 | 5.6 | 6.4 | 6.0 | 5.7 | 40 |
| 42 | | | | | | | | | 4.6 | 5.3 | 5.9 | 4.9 | 5.7 | 5.4 | 5.3 | 42 |
| 44 | | | | | | | | | 4.0 | 4.7 | 5.3 | 4.3 | 5.1 | 4.8 | 4.8 | 44 |
| 46 | | | | | | | | | | | | 3.8 | 4.6 | 4.2 | 4.3 | 46 |
| 48 | | | | | | | | | | | | 3.3 | 4.1 | 3.7 | 3.8 | 48 |
| 50 | | | | | | | | | | | | 2.8 | 3.6 | 3.3 | 3.3 | 50 |
| 52 | | | | | | | | | | | | | | 2.9 | 2.9 | 52 |
| 54 | | | | | | | | | | | | | | 2.5 | 2.5 | 54 |
| 56 | | | | | | | | | | | | | | | | 56 |
| 58 | | | | | | | | | | | | | | | | 58 |
| 60 | | | | | | | | | | | | | | | | 60 |
| 62 | | | | | | | | | | | | | | | | 62 |
| 64 | | | | | | | | | | | | | | | | 64 |
| 66 | | | | | | | | | | | | | | | | 66 |
| Number of lines | 4 | 4 | 4 | 4 | 4 | 3 | 3 | 3 | 3 | 3 | 3 | 3 | 3 | 2 | 2 | Number of lines |
| II | 46 | 0 | 92 | 46 | 46 | 92 | 46 | 46 | 92 | 46 | 46 | 92 | 46 | 92 | 100 | II |
| III | 46 | 92 | 46 | 92 | 46 | 92 | 92 | 46 | 92 | 92 | 46 | 92 | 92 | 92 | 100 | III |
| IV | 46 | 46 | 46 | 46 | 46 | 46 | 92 | 46 | 92 | 92 | 92 | 92 | 92 | 92 | 100 | IV |
| V | 46 | 46 | 46 | 46 | 46 | 46 | 46 | 92 | 46 | 92 | 92 | 92 | 92 | 92 | 100 | V |
| VI | 46 | 46 | 46 | 46 | 92 | 46 | 46 | 92 | 46 | 46 | 92 | 46 | 92 | 92 | 100 | VI |

**STC1600 TRUCK CRANE
LOAD CHART**
Prerequisites:

- ① Boom operation conditions (fully extended boom length), min length is 13.4m and max. length is 62m.
- ② The span of outriggers is 7.8x8.0m.
- ③ 360° working condition is applied.
- ④ Counterweight is 37T.

| Range (m) | Main boom | | | | | | | | | | | | | | Range (m) |
|-----------------|-----------|-------|-------|------|-------|-------|------|------|------|------|------|------|------|------|-----------------|
| | 13.4 | 17.8 | 17.8 | 17.8 | 22.3 | 22.3 | 22.3 | 26.8 | 26.8 | 26.8 | 31.3 | 31.3 | 31.3 | 35.7 | |
| 3 | 160.0 | | | | | | | | | | | | | | 3 |
| 3.5 | 140.0 | 130.0 | 130.0 | 63.7 | | | | | | | | | | | 3.5 |
| 4 | 125.0 | 122.0 | 120.0 | 59.7 | 110.0 | 103.3 | 69.8 | | | | | | | | 4 |
| 4.5 | 115.0 | 115.0 | 113.0 | 56.9 | 110.0 | 98.2 | 66.0 | 93.0 | 65.1 | 62.3 | | | | | 4.5 |
| 5 | 105.0 | 104.0 | 105.0 | 54.3 | 103.0 | 95.5 | 62.9 | 93.0 | 61.0 | 59.3 | 67.0 | 80.0 | 70.0 | | 5 |
| 6 | 93.0 | 91.0 | 92.0 | 49.2 | 90.0 | 83.8 | 58.0 | 89.0 | 57.3 | 57.7 | 64.6 | 80.0 | 62.4 | 63.5 | 6 |
| 7 | 80.0 | 79.5 | 79.0 | 45.3 | 79.0 | 74.2 | 52.5 | 78.0 | 50.1 | 51.4 | 56.8 | 73.0 | 56.2 | 56.6 | 7 |
| 8 | 75.0 | 73.2 | 72.0 | 41.8 | 70.0 | 65.3 | 47.6 | 70.0 | 43.8 | 44.9 | 50.4 | 68.0 | 51.7 | 51.7 | 8 |
| 9 | 64.0 | 63.3 | 63.0 | 39.2 | 62.0 | 57.3 | 43.9 | 61.5 | 39.7 | 40.7 | 45.2 | 60.0 | 48.0 | 46.9 | 9 |
| 10 | 53.0 | 52.3 | 53.4 | 36.4 | 52.7 | 53.0 | 40.5 | 53.6 | 36.0 | 37.6 | 40.5 | 53.0 | 44.5 | 43.2 | 10 |
| 12 | | 38.0 | 38.9 | 32.5 | 38.3 | 39.8 | 35.0 | 39.1 | 27.9 | 28.8 | 38.0 | 40.1 | 37.2 | 36.7 | 12 |
| 14 | | 29.0 | 29.9 | 29.6 | 29.4 | 30.8 | 31.3 | 30.1 | 26.3 | 25.4 | 30.2 | 31.1 | 32.8 | 30.6 | 14 |
| 16 | | | | | 23.3 | 24.6 | 26.7 | 24.0 | 24.6 | 24.0 | 24.1 | 24.9 | 26.5 | 24.4 | 16 |
| 18 | | | | | 18.8 | 20.1 | 22.2 | 19.5 | 20.1 | 22.3 | 19.6 | 20.4 | 22.0 | 19.9 | 18 |
| 20 | | | | | | | | 16.1 | 16.7 | 18.9 | 16.2 | 17.0 | 18.5 | 16.5 | 20 |
| 22 | | | | | | | | 13.5 | 14.0 | 16.1 | 13.6 | 14.3 | 15.8 | 13.9 | 22 |
| 24 | | | | | | | | | | | 11.4 | 12.1 | 13.6 | 11.7 | 24 |
| 26 | | | | | | | | | | | 9.6 | 10.4 | 11.8 | 9.9 | 26 |
| 28 | | | | | | | | | | | | | | 8.5 | 28 |
| 30 | | | | | | | | | | | | | | 7.2 | 30 |
| 32 | | | | | | | | | | | | | | 6.1 | 32 |
| 34 | | | | | | | | | | | | | | | 34 |
| 36 | | | | | | | | | | | | | | | 36 |
| 38 | | | | | | | | | | | | | | | 38 |
| 40 | | | | | | | | | | | | | | | 40 |
| 42 | | | | | | | | | | | | | | | 42 |
| 44 | | | | | | | | | | | | | | | 44 |
| 46 | | | | | | | | | | | | | | | 46 |
| 48 | | | | | | | | | | | | | | | 48 |
| 50 | | | | | | | | | | | | | | | 50 |
| 52 | | | | | | | | | | | | | | | 52 |
| 54 | | | | | | | | | | | | | | | 54 |
| 56 | | | | | | | | | | | | | | | 56 |
| 58 | | | | | | | | | | | | | | | 58 |
| 60 | | | | | | | | | | | | | | | 60 |
| 62 | | | | | | | | | | | | | | | 62 |
| 64 | | | | | | | | | | | | | | | 64 |
| 66 | | | | | | | | | | | | | | | 66 |
| Number of lines | 14 | 12 | 12 | 12 | 9 | 9 | 9 | 8 | 8 | 8 | 6 | 6 | 6 | 5 | Number of lines |
| II | 0 | 46 | 0 | 0 | 46 | 0 | 0 | 46 | 0 | 0 | 46 | 46 | 0 | 92 | II |
| III | 0 | 0 | 46 | 0 | 46 | 46 | 0 | 46 | 92 | 0 | 92 | 46 | 46 | 46 | III |
| IV | 0 | 0 | 0 | 0 | 0 | 46 | 0 | 46 | 46 | 46 | 46 | 46 | 46 | 46 | IV |
| V | 0 | 0 | 0 | 0 | 0 | 0 | 46 | 0 | 0 | 46 | 0 | 46 | 46 | 46 | V |
| VI | 0 | 0 | 0 | 46 | 0 | 0 | 46 | 0 | 0 | 46 | 0 | 0 | 46 | 0 | VI |

Prerequisites:

- ① Boom operation conditions (fully extended boom length), min length is 13.4m and max. length is 62m.
- ② The span of outriggers is 7.8x8.0m.
- ③ 360° working condition is applied.
- ④ Counterweight is 37T.

| Range (m) | Main boom | | | | | | | | | | | | | | | Range (m) |
|-----------------|-----------|------|------|------|------|------|------|------|------|------|------|------|------|------|------|-----------------|
| | 35.7 | 35.7 | 40.2 | 40.2 | 40.2 | 44.7 | 44.7 | 44.7 | 49.2 | 49.2 | 49.2 | 53.6 | 53.6 | 58.1 | 62 | |
| 3 | | | | | | | | | | | | | | | | 3 |
| 3.5 | | | | | | | | | | | | | | | | 3.5 |
| 4 | | | | | | | | | | | | | | | | 4 |
| 4.5 | | | | | | | | | | | | | | | | 4.5 |
| 5 | | | | | | | | | | | | | | | | 5 |
| 6 | 62.7 | 47.9 | | | | | | | | | | | | | | 6 |
| 7 | 60.2 | 43.4 | 46.2 | 43.1 | 39.7 | | | | | | | | | | | 7 |
| 8 | 56.1 | 39.3 | 42.6 | 39.7 | 37.3 | 37.3 | 33.6 | 29.3 | | | | | | | | 8 |
| 9 | 52.2 | 36.3 | 39.3 | 36.9 | 34.9 | 34.9 | 31.5 | 27.5 | 30.1 | 26.2 | 23.3 | | | | | 9 |
| 10 | 49.3 | 33.4 | 36.8 | 34.3 | 32.7 | 32.7 | 29.5 | 25.8 | 28.4 | 24.9 | 21.9 | 24.3 | 21.0 | | | 10 |
| 12 | 41.2 | 28.9 | 31.8 | 30.2 | 29.3 | 28.8 | 25.9 | 22.8 | 25.6 | 22.3 | 19.5 | 22.5 | 19.0 | 19.0 | 15.9 | 12 |
| 14 | 32.1 | 25.4 | 28.5 | 26.5 | 26.1 | 26.0 | 23.2 | 20.6 | 23.5 | 20.1 | 17.7 | 21.5 | 17.1 | 18.0 | 15.9 | 14 |
| 16 | 25.8 | 22.2 | 25.3 | 23.6 | 23.7 | 23.0 | 21.0 | 18.6 | 21.2 | 18.2 | 16.1 | 19.3 | 15.7 | 17.0 | 15.1 | 16 |
| 18 | 21.3 | 19.8 | 20.8 | 21.2 | 21.5 | 20.4 | 18.7 | 16.9 | 19.2 | 16.5 | 14.6 | 17.0 | 14.5 | 15.5 | 14.2 | 18 |
| 20 | 17.9 | 17.9 | 17.4 | 17.7 | 18.6 | 17.3 | 17.3 | 15.3 | 17.3 | 15.2 | 13.2 | 15.5 | 13.3 | 14.5 | 12.9 | 20 |
| 22 | 15.2 | 15.6 | 14.7 | 15.1 | 15.9 | 14.6 | 15.2 | 14.1 | 14.8 | 14.0 | 12.2 | 14.5 | 12.3 | 13.8 | 11.7 | 22 |
| 24 | 13.0 | 13.4 | 12.5 | 12.9 | 13.7 | 12.5 | 13.0 | 13.0 | 12.6 | 12.9 | 11.2 | 13.0 | 11.3 | 13.0 | 10.6 | 24 |
| 26 | 11.2 | 11.6 | 10.8 | 11.1 | 11.9 | 10.7 | 11.3 | 12.0 | 10.9 | 11.6 | 10.3 | 11.2 | 10.4 | 11.7 | 9.8 | 26 |
| 28 | 9.7 | 10.1 | 9.3 | 9.6 | 10.4 | 9.2 | 9.8 | 10.7 | 9.4 | 10.1 | 9.7 | 9.7 | 9.8 | 10.2 | 9.0 | 28 |
| 30 | 8.5 | 8.8 | 8.0 | 8.3 | 9.1 | 7.9 | 8.5 | 9.4 | 8.1 | 8.8 | 8.9 | 8.4 | 9.2 | 8.9 | 8.3 | 30 |
| 32 | 7.4 | 7.7 | 6.9 | 7.2 | 8.0 | 6.8 | 7.4 | 8.3 | 7.0 | 7.7 | 8.2 | 7.4 | 8.2 | 7.8 | 7.7 | 32 |
| 34 | | | 5.9 | 6.3 | 7.0 | 5.9 | 6.4 | 7.4 | 6.1 | 6.8 | 7.4 | 6.4 | 7.2 | 6.8 | 6.9 | 34 |
| 36 | | | 5.1 | 5.4 | 6.2 | 5.1 | 5.6 | 6.5 | 5.2 | 5.9 | 6.6 | 5.6 | 6.4 | 6.0 | 6.0 | 36 |
| 38 | | | | | | 4.3 | 4.9 | 5.8 | 4.5 | 5.2 | 5.8 | 4.8 | 5.6 | 5.3 | 5.3 | 38 |
| 40 | | | | | | 3.7 | 4.2 | 5.1 | 3.8 | 4.5 | 5.2 | 4.2 | 5.0 | 4.6 | 4.6 | 40 |
| 42 | | | | | | | | | 3.3 | 3.9 | 4.6 | 3.6 | 4.4 | 4.0 | 4.1 | 42 |
| 44 | | | | | | | | | 2.7 | 3.4 | 4.0 | 3.1 | 3.8 | 3.5 | 3.5 | 44 |
| 46 | | | | | | | | | | | | 2.6 | 3.4 | 3.0 | 3.0 | 46 |
| 48 | | | | | | | | | | | | 2.1 | 2.9 | 2.6 | 2.6 | 48 |
| 50 | | | | | | | | | | | | 1.7 | 2.5 | 2.2 | 2.2 | 50 |
| 52 | | | | | | | | | | | | | | 1.8 | 1.8 | 52 |
| 54 | | | | | | | | | | | | | | 1.4 | 1.5 | 54 |
| 56 | | | | | | | | | | | | | | | | 56 |
| 58 | | | | | | | | | | | | | | | | 58 |
| 60 | | | | | | | | | | | | | | | | 60 |
| 62 | | | | | | | | | | | | | | | | 62 |
| 64 | | | | | | | | | | | | | | | | 64 |
| 66 | | | | | | | | | | | | | | | | 66 |
| Number of lines | 4 | 4 | 4 | 4 | 4 | 3 | 3 | 3 | 3 | 3 | 3 | 3 | 3 | 2 | 2 | Number of lines |
| II | 46 | 0 | 92 | 46 | 46 | 92 | 46 | 46 | 92 | 46 | 46 | 92 | 46 | 92 | 100 | II |
| III | 46 | 92 | 46 | 92 | 46 | 92 | 92 | 46 | 92 | 92 | 46 | 92 | 92 | 92 | 100 | III |
| IV | 46 | 46 | 46 | 46 | 46 | 46 | 92 | 46 | 92 | 92 | 92 | 92 | 92 | 92 | 100 | IV |
| V | 46 | 46 | 46 | 46 | 46 | 46 | 46 | 92 | 46 | 92 | 92 | 92 | 92 | 92 | 100 | V |
| VI | 46 | 46 | 46 | 46 | 92 | 46 | 46 | 92 | 46 | 46 | 92 | 46 | 92 | 92 | 100 | VI |

**STC1600 TRUCK CRANE
LOAD CHART**
Prerequisites:

- ① Boom operation conditions (fully extended boom length), min length is 13.4m and max. length is 62m.
- ② The span of outriggers is 7.8x8.0m.
- ③ 360° working condition is applied.
- ④ Counterweight is 28T.

| Range (m) | Main boom | | | | | | | | | | | | | | Range (m) |
|-----------------|-----------|-------|-------|------|-------|-------|------|------|------|------|------|------|------|------|-----------------|
| | 13.4 | 17.8 | 17.8 | 17.8 | 22.3 | 22.3 | 22.3 | 26.8 | 26.8 | 26.8 | 31.3 | 31.3 | 31.3 | 35.7 | |
| 3 | 160.0 | | | | | | | | | | | | | | 3 |
| 3.5 | 140.0 | 130.0 | 130.0 | 63.7 | | | | | | | | | | | 3.5 |
| 4 | 125.0 | 122.0 | 120.0 | 59.7 | 110.0 | 103.3 | 69.8 | | | | | | | | 4 |
| 4.5 | 115.0 | 115.0 | 113.0 | 56.9 | 110.0 | 98.2 | 66.0 | 93.0 | 65.1 | 62.3 | | | | | 4.5 |
| 5 | 105.0 | 104.0 | 105.0 | 54.3 | 103.0 | 95.5 | 62.9 | 93.0 | 61.0 | 59.3 | 67.0 | 80.0 | 70.0 | | 5 |
| 6 | 93.0 | 91.0 | 92.0 | 49.2 | 90.0 | 83.8 | 58.0 | 89.0 | 57.3 | 57.7 | 64.6 | 80.0 | 62.4 | 63.5 | 6 |
| 7 | 80.0 | 79.5 | 79.0 | 45.3 | 79.0 | 74.2 | 52.5 | 78.0 | 50.1 | 51.4 | 56.8 | 73.0 | 56.2 | 56.6 | 7 |
| 8 | 68.7 | 67.8 | 69.0 | 41.8 | 68.2 | 65.3 | 47.6 | 69.2 | 43.8 | 44.9 | 50.4 | 68.0 | 51.7 | 51.7 | 8 |
| 9 | 54.8 | 54.0 | 55.2 | 39.2 | 54.4 | 56.1 | 43.9 | 55.4 | 39.7 | 40.7 | 45.2 | 56.5 | 48.0 | 46.9 | 9 |
| 10 | 45.1 | 44.4 | 45.5 | 36.4 | 44.8 | 46.4 | 40.5 | 45.7 | 36.0 | 37.6 | 40.5 | 46.8 | 44.5 | 43.2 | 10 |
| 12 | | 31.9 | 32.9 | 32.5 | 32.3 | 33.7 | 35.0 | 33.1 | 27.9 | 28.8 | 33.2 | 34.1 | 35.9 | 33.5 | 12 |
| 14 | | 24.1 | 25.0 | 27.2 | 24.5 | 25.8 | 28.1 | 25.2 | 25.8 | 25.4 | 25.3 | 26.1 | 27.9 | 25.6 | 14 |
| 16 | | | | | 19.1 | 20.4 | 22.6 | 19.9 | 20.4 | 22.7 | 19.9 | 20.7 | 22.4 | 20.3 | 16 |
| 18 | | | | | 15.2 | 16.5 | 18.6 | 16.0 | 16.5 | 18.7 | 16.0 | 16.8 | 18.4 | 16.4 | 18 |
| 20 | | | | | | | | 13.0 | 13.5 | 15.7 | 13.1 | 13.8 | 15.4 | 13.4 | 20 |
| 22 | | | | | | | | 10.7 | 11.2 | 13.3 | 10.7 | 11.5 | 13.0 | 11.1 | 22 |
| 24 | | | | | | | | | | | 8.9 | 9.6 | 11.1 | 9.2 | 24 |
| 26 | | | | | | | | | | | 7.3 | 8.1 | 9.5 | 7.6 | 26 |
| 28 | | | | | | | | | | | | | | 6.3 | 28 |
| 30 | | | | | | | | | | | | | | 5.2 | 30 |
| 32 | | | | | | | | | | | | | | 4.3 | 32 |
| 34 | | | | | | | | | | | | | | | 34 |
| 36 | | | | | | | | | | | | | | | 36 |
| 38 | | | | | | | | | | | | | | | 38 |
| 40 | | | | | | | | | | | | | | | 40 |
| 42 | | | | | | | | | | | | | | | 42 |
| 44 | | | | | | | | | | | | | | | 44 |
| 46 | | | | | | | | | | | | | | | 46 |
| 48 | | | | | | | | | | | | | | | 48 |
| 50 | | | | | | | | | | | | | | | 50 |
| 52 | | | | | | | | | | | | | | | 52 |
| 54 | | | | | | | | | | | | | | | 54 |
| 56 | | | | | | | | | | | | | | | 56 |
| 58 | | | | | | | | | | | | | | | 58 |
| 60 | | | | | | | | | | | | | | | 60 |
| 62 | | | | | | | | | | | | | | | 62 |
| 64 | | | | | | | | | | | | | | | 64 |
| 66 | | | | | | | | | | | | | | | 66 |
| Number of lines | 14 | 12 | 12 | 12 | 9 | 9 | 9 | 8 | 8 | 8 | 6 | 6 | 6 | 5 | Number of lines |
| II | 0 | 46 | 0 | 0 | 46 | 0 | 0 | 46 | 0 | 0 | 46 | 46 | 0 | 92 | II |
| III | 0 | 0 | 46 | 0 | 46 | 46 | 0 | 46 | 92 | 0 | 92 | 46 | 46 | 46 | III |
| IV | 0 | 0 | 0 | 0 | 0 | 46 | 0 | 46 | 46 | 46 | 46 | 46 | 46 | 46 | IV |
| V | 0 | 0 | 0 | 0 | 0 | 0 | 46 | 0 | 0 | 46 | 0 | 46 | 46 | 46 | V |
| VI | 0 | 0 | 0 | 46 | 0 | 0 | 46 | 0 | 0 | 46 | 0 | 0 | 46 | 0 | VI |

Prerequisites:

- ① Boom operation conditions (fully extended boom length), min length is 13.4m and max. length is 62m.
- ② The span of outriggers is 7.8x8.0m.
- ③ 360° working condition is applied.
- ④ Counterweight is 28T.

| Range (m) | Main boom | | | | | | | | | | | | | | | Range (m) |
|-----------------|-----------|------|------|------|------|------|------|------|------|------|------|------|------|------|------|-----------------|
| | 35.7 | 35.7 | 40.2 | 40.2 | 40.2 | 44.7 | 44.7 | 44.7 | 49.2 | 49.2 | 49.2 | 53.6 | 53.6 | 58.1 | 62 | |
| 3 | | | | | | | | | | | | | | | | 3 |
| 3.5 | | | | | | | | | | | | | | | | 3.5 |
| 4 | | | | | | | | | | | | | | | | 4 |
| 4.5 | | | | | | | | | | | | | | | | 4.5 |
| 5 | | | | | | | | | | | | | | | | 5 |
| 6 | 62.7 | 47.9 | | | | | | | | | | | | | | 6 |
| 7 | 60.2 | 43.4 | 46.2 | 43.1 | 39.7 | | | | | | | | | | | 7 |
| 8 | 56.1 | 39.3 | 42.6 | 39.7 | 37.3 | 37.3 | 33.6 | 29.3 | | | | | | | | 8 |
| 9 | 52.2 | 36.3 | 39.3 | 36.9 | 34.9 | 34.9 | 31.5 | 27.5 | 30.1 | 26.2 | 23.3 | | | | | 9 |
| 10 | 47.9 | 33.4 | 36.8 | 34.3 | 32.7 | 32.7 | 29.5 | 25.8 | 28.4 | 24.9 | 21.9 | 24.3 | 21.0 | | | 10 |
| 12 | 35.1 | 28.9 | 31.8 | 30.2 | 29.3 | 28.8 | 25.9 | 22.8 | 25.6 | 22.3 | 19.5 | 22.5 | 19.0 | 19.0 | 15.9 | 12 |
| 14 | 27.1 | 25.4 | 26.6 | 26.5 | 26.1 | 26.0 | 23.2 | 20.6 | 23.5 | 20.1 | 17.7 | 21.5 | 17.1 | 18.0 | 15.9 | 14 |
| 16 | 21.7 | 22.1 | 21.2 | 21.5 | 22.4 | 21.1 | 21.0 | 18.6 | 21.2 | 18.2 | 16.1 | 19.3 | 15.7 | 17.0 | 15.1 | 16 |
| 18 | 17.7 | 18.2 | 17.2 | 17.6 | 18.5 | 17.1 | 17.8 | 16.9 | 17.3 | 16.5 | 14.6 | 17.0 | 14.5 | 15.5 | 14.2 | 18 |
| 20 | 14.7 | 15.1 | 14.2 | 14.6 | 15.4 | 14.2 | 14.8 | 15.3 | 14.4 | 15.1 | 13.2 | 14.7 | 13.3 | 14.5 | 12.9 | 20 |
| 22 | 12.4 | 12.8 | 11.9 | 12.2 | 13.1 | 11.8 | 12.4 | 13.4 | 12.0 | 12.8 | 12.2 | 12.4 | 12.3 | 12.8 | 11.7 | 22 |
| 24 | 10.5 | 10.9 | 10.0 | 10.3 | 11.2 | 9.9 | 10.5 | 11.5 | 10.1 | 10.9 | 11.2 | 10.5 | 11.3 | 10.9 | 10.6 | 24 |
| 26 | 8.9 | 9.3 | 8.4 | 8.8 | 9.6 | 8.4 | 9.0 | 9.9 | 8.6 | 9.3 | 9.9 | 8.9 | 9.8 | 9.4 | 9.4 | 26 |
| 28 | 7.6 | 8.0 | 7.1 | 7.5 | 8.3 | 7.1 | 7.6 | 8.6 | 7.3 | 8.0 | 8.6 | 7.6 | 8.4 | 8.0 | 8.1 | 28 |
| 30 | 6.5 | 6.9 | 6.0 | 6.4 | 7.1 | 6.0 | 6.5 | 7.5 | 6.1 | 6.9 | 7.5 | 6.5 | 7.3 | 6.9 | 7.0 | 30 |
| 32 | 5.5 | 5.9 | 5.1 | 5.4 | 6.2 | 5.0 | 5.6 | 6.5 | 5.2 | 5.9 | 6.5 | 5.5 | 6.4 | 6.0 | 6.0 | 32 |
| 34 | | | 4.2 | 4.6 | 5.3 | 4.2 | 4.7 | 5.6 | 4.3 | 5.1 | 5.7 | 4.7 | 5.5 | 5.1 | 5.2 | 34 |
| 36 | | | 3.5 | 3.8 | 4.6 | 3.4 | 4.0 | 4.9 | 3.6 | 4.3 | 5.0 | 3.9 | 4.8 | 4.4 | 4.4 | 36 |
| 38 | | | | | | 2.7 | 3.3 | 4.2 | 2.9 | 3.7 | 4.3 | 3.3 | 4.1 | 3.7 | 3.8 | 38 |
| 40 | | | | | | 2.2 | 2.7 | 3.6 | 2.3 | 3.1 | 3.7 | 2.7 | 3.5 | 3.1 | 3.2 | 40 |
| 42 | | | | | | | | | 1.8 | 2.5 | 3.2 | 2.2 | 3.0 | 2.6 | 2.6 | 42 |
| 44 | | | | | | | | | 1.3 | 2.1 | 2.7 | 1.7 | 2.5 | 2.1 | 2.2 | 44 |
| 46 | | | | | | | | | | | | 1.3 | 2.1 | 1.7 | 1.7 | 46 |
| 48 | | | | | | | | | | | | | 1.7 | 1.3 | 1.3 | 48 |
| 50 | | | | | | | | | | | | | 1.3 | | 1.0 | 50 |
| 52 | | | | | | | | | | | | | | | | 52 |
| 54 | | | | | | | | | | | | | | | | 54 |
| 56 | | | | | | | | | | | | | | | | 56 |
| 58 | | | | | | | | | | | | | | | | 58 |
| 60 | | | | | | | | | | | | | | | | 60 |
| 62 | | | | | | | | | | | | | | | | 62 |
| 64 | | | | | | | | | | | | | | | | 64 |
| 66 | | | | | | | | | | | | | | | | 66 |
| Number of lines | 4 | 4 | 4 | 4 | 4 | 3 | 3 | 3 | 3 | 3 | 3 | 3 | 3 | 2 | 2 | Number of lines |
| II | 46 | 0 | 92 | 46 | 46 | 92 | 46 | 46 | 92 | 46 | 46 | 92 | 46 | 92 | 100 | II |
| III | 46 | 92 | 46 | 92 | 46 | 92 | 92 | 46 | 92 | 92 | 46 | 92 | 92 | 92 | 100 | III |
| IV | 46 | 46 | 46 | 46 | 46 | 46 | 92 | 46 | 92 | 92 | 92 | 92 | 92 | 92 | 100 | IV |
| V | 46 | 46 | 46 | 46 | 46 | 46 | 46 | 92 | 46 | 92 | 92 | 92 | 92 | 92 | 100 | V |
| VI | 46 | 46 | 46 | 46 | 92 | 46 | 46 | 92 | 46 | 46 | 92 | 46 | 92 | 92 | 100 | VI |

**STC1600 TRUCK CRANE
LOAD CHART**
Prerequisites:

- ① Boom operation conditions (fully extended boom length), min length is 13.4m and max. length is 62m.
- ② The span of outriggers is 7.8x8.0m.
- ③ 360° working condition is applied.
- ④ Counterweight is 19T.

| Range (m) | Main boom | | | | | | | | | | | | | | Range (m) |
|-----------------|-----------|-------|-------|------|-------|-------|------|------|------|------|------|------|------|------|-----------------|
| | 13.4 | 17.8 | 17.8 | 17.8 | 22.3 | 22.3 | 22.3 | 26.8 | 26.8 | 26.8 | 31.3 | 31.3 | 31.3 | 35.7 | |
| 3 | 150.0 | | | | | | | | | | | | | | 3 |
| 3.5 | 140.0 | 130.0 | 130.0 | 63.7 | | | | | | | | | | | 3.5 |
| 4 | 125.0 | 122.0 | 120.0 | 59.7 | 110.0 | 103.3 | 69.8 | | | | | | | | 4 |
| 4.5 | 115.0 | 115.0 | 113.0 | 56.9 | 110.0 | 98.2 | 66.0 | 93.0 | 65.1 | 62.3 | | | | | 4.5 |
| 5 | 105.0 | 104.0 | 105.0 | 54.3 | 103.0 | 95.5 | 62.9 | 93.0 | 61.0 | 59.3 | 67.0 | 80.0 | 70.0 | | 5 |
| 6 | 93.0 | 91.0 | 92.0 | 49.2 | 90.0 | 83.8 | 58.0 | 89.0 | 57.3 | 57.7 | 64.6 | 80.0 | 62.4 | 63.5 | 6 |
| 7 | 75.7 | 74.7 | 76.1 | 45.3 | 75.2 | 74.2 | 52.5 | 76.3 | 50.1 | 51.4 | 56.8 | 73.0 | 56.2 | 56.6 | 7 |
| 8 | 57.3 | 56.4 | 57.7 | 41.8 | 56.9 | 58.8 | 47.6 | 57.9 | 43.8 | 44.9 | 50.4 | 59.1 | 51.7 | 51.7 | 8 |
| 9 | 45.5 | 44.7 | 45.8 | 39.2 | 45.1 | 46.8 | 43.9 | 46.0 | 39.7 | 40.7 | 45.2 | 47.2 | 48.0 | 46.5 | 9 |
| 10 | 37.2 | 36.5 | 37.6 | 36.4 | 36.9 | 38.5 | 40.5 | 37.8 | 36.0 | 37.6 | 37.9 | 38.8 | 40.9 | 38.2 | 10 |
| 12 | | 25.8 | 26.8 | 29.1 | 26.2 | 27.7 | 30.1 | 27.0 | 27.6 | 28.8 | 27.1 | 28.0 | 29.8 | 27.4 | 12 |
| 14 | | 19.1 | 20.1 | 22.2 | 19.5 | 20.9 | 23.2 | 20.3 | 20.9 | 23.3 | 20.4 | 21.2 | 22.9 | 20.7 | 14 |
| 16 | | | | | 15.0 | 16.3 | 18.5 | 15.7 | 16.3 | 18.6 | 15.8 | 16.6 | 18.2 | 16.1 | 16 |
| 18 | | | | | 11.6 | 12.9 | 15.0 | 12.4 | 12.9 | 15.2 | 12.5 | 13.2 | 14.8 | 12.8 | 18 |
| 20 | | | | | | | | 9.7 | 10.3 | 12.6 | 9.8 | 10.6 | 12.2 | 10.1 | 20 |
| 22 | | | | | | | | 7.6 | 8.2 | 10.4 | 7.7 | 8.5 | 10.1 | 8.0 | 22 |
| 24 | | | | | | | | | | | 6.1 | 6.8 | 8.4 | 6.4 | 24 |
| 26 | | | | | | | | | | | 4.7 | 5.5 | 7.0 | 5.0 | 26 |
| 28 | | | | | | | | | | | | | | 3.9 | 28 |
| 30 | | | | | | | | | | | | | | 2.9 | 30 |
| 32 | | | | | | | | | | | | | | 2.1 | 32 |
| 34 | | | | | | | | | | | | | | | 34 |
| 36 | | | | | | | | | | | | | | | 36 |
| 38 | | | | | | | | | | | | | | | 38 |
| 40 | | | | | | | | | | | | | | | 40 |
| 42 | | | | | | | | | | | | | | | 42 |
| 44 | | | | | | | | | | | | | | | 44 |
| 46 | | | | | | | | | | | | | | | 46 |
| 48 | | | | | | | | | | | | | | | 48 |
| 50 | | | | | | | | | | | | | | | 50 |
| 52 | | | | | | | | | | | | | | | 52 |
| 54 | | | | | | | | | | | | | | | 54 |
| 56 | | | | | | | | | | | | | | | 56 |
| 58 | | | | | | | | | | | | | | | 58 |
| 60 | | | | | | | | | | | | | | | 60 |
| 62 | | | | | | | | | | | | | | | 62 |
| 64 | | | | | | | | | | | | | | | 64 |
| 66 | | | | | | | | | | | | | | | 66 |
| Number of lines | 14 | 12 | 12 | 12 | 9 | 9 | 9 | 8 | 8 | 8 | 6 | 6 | 6 | 5 | Number of lines |
| II | 0 | 46 | 0 | 0 | 46 | 0 | 0 | 46 | 0 | 0 | 46 | 46 | 0 | 92 | II |
| III | 0 | 0 | 46 | 0 | 46 | 46 | 0 | 46 | 92 | 0 | 92 | 46 | 46 | 46 | III |
| IV | 0 | 0 | 0 | 0 | 0 | 46 | 0 | 46 | 46 | 46 | 46 | 46 | 46 | 46 | IV |
| V | 0 | 0 | 0 | 0 | 0 | 0 | 46 | 0 | 0 | 46 | 0 | 46 | 46 | 46 | V |
| VI | 0 | 0 | 0 | 46 | 0 | 0 | 46 | 0 | 0 | 46 | 0 | 0 | 46 | 0 | VI |

Prerequisites:

- ① Boom operation conditions (fully extended boom length), min length is 13.4m and max. length is 62m.
- ② The span of outriggers is 7.8x8.0m.
- ③ 360° working condition is applied.
- ④ Counterweight is 19T.

| Range (m) | Main boom | | | | | | | | | | | | | | | Range (m) |
|-----------------|-----------|------|------|------|------|------|------|------|------|------|------|------|------|------|------|-----------------|
| | 35.7 | 35.7 | 40.2 | 40.2 | 40.2 | 44.7 | 44.7 | 44.7 | 49.2 | 49.2 | 49.2 | 53.6 | 53.6 | 58.1 | 62 | |
| 3 | | | | | | | | | | | | | | | | 3 |
| 3.5 | | | | | | | | | | | | | | | | 3.5 |
| 4 | | | | | | | | | | | | | | | | 4 |
| 4.5 | | | | | | | | | | | | | | | | 4.5 |
| 5 | | | | | | | | | | | | | | | | 5 |
| 6 | 62.7 | 47.9 | | | | | | | | | | | | | | 6 |
| 7 | 60.2 | 43.4 | 46.2 | 43.1 | 39.7 | | | | | | | | | | | 7 |
| 8 | 56.1 | 39.3 | 42.6 | 39.7 | 37.3 | 37.3 | 33.6 | 29.3 | | | | | | | | 8 |
| 9 | 48.4 | 36.3 | 39.3 | 36.9 | 34.9 | 34.9 | 31.5 | 27.5 | 30.1 | 26.2 | 23.3 | | | | | 9 |
| 10 | 40.0 | 33.4 | 36.8 | 34.3 | 32.7 | 32.7 | 29.5 | 25.8 | 28.4 | 24.9 | 21.9 | 24.3 | 21.0 | | | 10 |
| 12 | 29.0 | 28.9 | 28.4 | 28.9 | 29.3 | 28.3 | 25.9 | 22.8 | 25.6 | 22.3 | 19.5 | 22.5 | 19.0 | 19.0 | 15.9 | 12 |
| 14 | 22.2 | 22.7 | 21.6 | 22.1 | 23.0 | 21.6 | 22.2 | 20.6 | 21.8 | 20.1 | 17.7 | 21.5 | 17.1 | 18.0 | 15.9 | 14 |
| 16 | 17.5 | 18.0 | 17.0 | 17.4 | 18.3 | 16.9 | 17.6 | 18.6 | 17.1 | 18.0 | 16.1 | 17.5 | 15.7 | 17.0 | 15.1 | 16 |
| 18 | 14.2 | 14.6 | 13.6 | 14.0 | 14.9 | 13.6 | 14.2 | 15.2 | 13.8 | 14.6 | 14.6 | 14.1 | 14.5 | 14.6 | 14.2 | 18 |
| 20 | 11.6 | 12.0 | 11.0 | 11.4 | 12.3 | 11.0 | 11.6 | 12.6 | 11.2 | 12.0 | 12.7 | 11.5 | 12.5 | 12.1 | 12.1 | 20 |
| 22 | 9.4 | 9.9 | 8.9 | 9.3 | 10.2 | 8.8 | 9.5 | 10.5 | 9.0 | 9.8 | 10.5 | 9.4 | 10.3 | 9.9 | 10.0 | 22 |
| 24 | 7.7 | 8.2 | 7.2 | 7.6 | 8.4 | 7.2 | 7.8 | 8.8 | 7.4 | 8.1 | 8.8 | 7.7 | 8.6 | 8.2 | 8.3 | 24 |
| 26 | 6.4 | 6.8 | 5.9 | 6.2 | 7.0 | 5.8 | 6.4 | 7.4 | 6.0 | 6.8 | 7.4 | 6.3 | 7.2 | 6.8 | 6.9 | 26 |
| 28 | 5.2 | 5.6 | 4.7 | 5.1 | 5.9 | 4.6 | 5.2 | 6.2 | 4.8 | 5.6 | 6.3 | 5.2 | 6.1 | 5.7 | 5.7 | 28 |
| 30 | 4.2 | 4.6 | 3.8 | 4.1 | 4.9 | 3.7 | 4.3 | 5.2 | 3.9 | 4.6 | 5.3 | 4.2 | 5.1 | 4.7 | 4.7 | 30 |
| 32 | 3.4 | 3.8 | 2.9 | 3.3 | 4.1 | 2.9 | 3.4 | 4.4 | 3.1 | 3.8 | 4.4 | 3.4 | 4.3 | 3.9 | 3.9 | 32 |
| 34 | | | 2.2 | 2.6 | 3.3 | 2.2 | 2.7 | 3.7 | 2.3 | 3.1 | 3.7 | 2.7 | 3.5 | 3.1 | 3.2 | 34 |
| 36 | | | 1.6 | 1.9 | 2.7 | 1.5 | 2.1 | 3.0 | 1.7 | 2.4 | 3.1 | 2.1 | 2.9 | 2.5 | 2.6 | 36 |
| 38 | | | | | | 1.0 | 1.5 | 2.5 | 1.2 | 1.9 | 2.5 | 1.5 | 2.3 | 2.0 | 2.0 | 38 |
| 40 | | | | | | | 1.1 | 2.0 | | 1.4 | 2.0 | 1.0 | 1.8 | 1.5 | 1.5 | 40 |
| 42 | | | | | | | | | | 1.0 | 1.6 | | 1.4 | 1.0 | 1.1 | 42 |
| 44 | | | | | | | | | | | 1.2 | | 1.0 | | | 44 |
| 46 | | | | | | | | | | | | | | | | 46 |
| 48 | | | | | | | | | | | | | | | | 48 |
| 50 | | | | | | | | | | | | | | | | 50 |
| 52 | | | | | | | | | | | | | | | | 52 |
| 54 | | | | | | | | | | | | | | | | 54 |
| 56 | | | | | | | | | | | | | | | | 56 |
| 58 | | | | | | | | | | | | | | | | 58 |
| 60 | | | | | | | | | | | | | | | | 60 |
| 62 | | | | | | | | | | | | | | | | 62 |
| 64 | | | | | | | | | | | | | | | | 64 |
| 66 | | | | | | | | | | | | | | | | 66 |
| Number of lines | 4 | 4 | 4 | 4 | 4 | 3 | 3 | 3 | 3 | 3 | 3 | 3 | 3 | 2 | 2 | Number of lines |
| II | 46 | 0 | 92 | 46 | 46 | 92 | 46 | 46 | 92 | 46 | 46 | 92 | 46 | 92 | 100 | II |
| III | 46 | 92 | 46 | 92 | 46 | 92 | 92 | 46 | 92 | 92 | 46 | 92 | 92 | 92 | 100 | III |
| IV | 46 | 46 | 46 | 46 | 46 | 46 | 92 | 46 | 92 | 92 | 92 | 92 | 92 | 92 | 100 | IV |
| V | 46 | 46 | 46 | 46 | 46 | 46 | 46 | 92 | 46 | 92 | 92 | 92 | 92 | 92 | 100 | V |
| VI | 46 | 46 | 46 | 46 | 92 | 46 | 46 | 92 | 46 | 46 | 92 | 46 | 92 | 92 | 100 | VI |

**STC1600 TRUCK CRANE
LOAD CHART**
Prerequisites:

- ① Boom operation conditions (fully extended boom length), min length is 13.4m and max. length is 62m.
- ② The span of outriggers is 7.8x8.0m.
- ③ Side and rear working conditions are applied.
- ④ Counterweight is 19T.

| Range (m) | Main boom | | | | | | | | | | | | | | Range (m) |
|-----------------|-----------|-------|-------|------|-------|-------|------|------|------|------|------|------|------|------|-----------------|
| | 13.4 | 17.8 | 17.8 | 17.8 | 22.3 | 22.3 | 22.3 | 26.8 | 26.8 | 26.8 | 31.3 | 31.3 | 31.3 | 35.7 | |
| 3 | 150.0 | | | | | | | | | | | | | | 3 |
| 3.5 | 140.0 | 130.0 | 130.0 | 63.7 | | | | | | | | | | | 3.5 |
| 4 | 125.0 | 122.0 | 120.0 | 59.7 | 110.0 | 103.3 | 69.8 | | | | | | | | 4 |
| 4.5 | 115.0 | 115.0 | 113.0 | 56.9 | 110.0 | 98.2 | 66.0 | 93.0 | 65.1 | 62.3 | | | | | 4.5 |
| 5 | 105.0 | 104.0 | 105.0 | 54.3 | 103.0 | 95.5 | 62.9 | 93.0 | 61.0 | 59.3 | 67.0 | 80.0 | 70.0 | | 5 |
| 6 | 93.0 | 91.0 | 92.0 | 49.2 | 90.0 | 83.8 | 58.0 | 89.0 | 57.3 | 57.7 | 64.6 | 80.0 | 62.4 | 63.5 | 6 |
| 7 | 75.7 | 74.7 | 76.1 | 45.3 | 75.2 | 74.2 | 52.5 | 76.3 | 50.1 | 51.4 | 56.8 | 73.0 | 56.2 | 56.6 | 7 |
| 8 | 57.3 | 56.4 | 57.7 | 41.8 | 56.9 | 58.8 | 47.6 | 57.9 | 43.8 | 44.9 | 50.4 | 59.1 | 51.7 | 51.7 | 8 |
| 9 | 45.5 | 44.7 | 45.8 | 39.2 | 45.1 | 46.8 | 43.9 | 46.0 | 39.7 | 40.7 | 45.2 | 47.2 | 48.0 | 46.5 | 9 |
| 10 | 37.2 | 36.5 | 37.6 | 36.4 | 36.9 | 38.5 | 40.5 | 37.8 | 36.0 | 37.6 | 37.9 | 38.8 | 40.9 | 38.2 | 10 |
| 12 | | 25.8 | 26.8 | 29.1 | 26.2 | 27.7 | 30.1 | 27.0 | 27.6 | 28.8 | 27.1 | 28.0 | 29.8 | 27.4 | 12 |
| 14 | | 19.1 | 20.1 | 22.2 | 19.5 | 20.9 | 23.2 | 20.3 | 20.9 | 23.3 | 20.4 | 21.2 | 22.9 | 20.7 | 14 |
| 16 | | | | | 15.0 | 16.3 | 18.5 | 15.7 | 16.3 | 18.6 | 15.8 | 16.6 | 18.2 | 16.1 | 16 |
| 18 | | | | | 11.6 | 12.9 | 15.0 | 12.4 | 12.9 | 15.2 | 12.5 | 13.2 | 14.8 | 12.8 | 18 |
| 20 | | | | | | | | 9.8 | 10.4 | 12.6 | 9.9 | 10.7 | 12.2 | 10.2 | 20 |
| 22 | | | | | | | | 7.9 | 8.4 | 10.5 | 7.9 | 8.7 | 10.2 | 8.3 | 22 |
| 24 | | | | | | | | | | | 6.3 | 7.1 | 8.6 | 6.6 | 24 |
| 26 | | | | | | | | | | | 5.0 | 5.7 | 7.2 | 5.3 | 26 |
| 28 | | | | | | | | | | | | | | 4.2 | 28 |
| 30 | | | | | | | | | | | | | | 3.3 | 30 |
| 32 | | | | | | | | | | | | | | 2.5 | 32 |
| 34 | | | | | | | | | | | | | | | 34 |
| 36 | | | | | | | | | | | | | | | 36 |
| 38 | | | | | | | | | | | | | | | 38 |
| 40 | | | | | | | | | | | | | | | 40 |
| 42 | | | | | | | | | | | | | | | 42 |
| 44 | | | | | | | | | | | | | | | 44 |
| 46 | | | | | | | | | | | | | | | 46 |
| 48 | | | | | | | | | | | | | | | 48 |
| 50 | | | | | | | | | | | | | | | 50 |
| 52 | | | | | | | | | | | | | | | 52 |
| 54 | | | | | | | | | | | | | | | 54 |
| 56 | | | | | | | | | | | | | | | 56 |
| 58 | | | | | | | | | | | | | | | 58 |
| 60 | | | | | | | | | | | | | | | 60 |
| 62 | | | | | | | | | | | | | | | 62 |
| 64 | | | | | | | | | | | | | | | 64 |
| 66 | | | | | | | | | | | | | | | 66 |
| Number of lines | 14 | 12 | 12 | 12 | 9 | 9 | 9 | 8 | 8 | 8 | 6 | 6 | 6 | 5 | Number of lines |
| II | 0 | 46 | 0 | 0 | 46 | 0 | 0 | 46 | 0 | 0 | 46 | 46 | 0 | 92 | II |
| III | 0 | 0 | 46 | 0 | 46 | 46 | 0 | 46 | 92 | 0 | 92 | 46 | 46 | 46 | III |
| IV | 0 | 0 | 0 | 0 | 0 | 46 | 0 | 46 | 46 | 46 | 46 | 46 | 46 | 46 | IV |
| V | 0 | 0 | 0 | 0 | 0 | 0 | 46 | 0 | 0 | 46 | 0 | 46 | 46 | 46 | V |
| VI | 0 | 0 | 0 | 46 | 0 | 0 | 46 | 0 | 0 | 46 | 0 | 0 | 46 | 0 | VI |

Prerequisites:

- ① Boom operation conditions (fully extended boom length), min length is 13.4m and max. length is 62m.
- ② The span of outriggers is 7.8x8.0m.
- ③ Side and rear working conditions are applied.
- ④ Counterweight is 19T.

| Range (m) | Main boom | | | | | | | | | | | | | | | Range (m) |
|-----------------|-----------|------|------|------|------|------|------|------|------|------|------|------|------|------|------|-----------------|
| | 35.7 | 35.7 | 40.2 | 40.2 | 40.2 | 44.7 | 44.7 | 44.7 | 49.2 | 49.2 | 49.2 | 53.6 | 53.6 | 58.1 | 62 | |
| 3 | | | | | | | | | | | | | | | | 3 |
| 3.5 | | | | | | | | | | | | | | | | 3.5 |
| 4 | | | | | | | | | | | | | | | | 4 |
| 4.5 | | | | | | | | | | | | | | | | 4.5 |
| 5 | | | | | | | | | | | | | | | | 5 |
| 6 | 62.7 | 47.9 | | | | | | | | | | | | | | 6 |
| 7 | 60.2 | 43.4 | 46.2 | 43.1 | 39.7 | | | | | | | | | | | 7 |
| 8 | 56.1 | 39.3 | 42.6 | 39.7 | 37.3 | 37.3 | 33.6 | 29.3 | | | | | | | | 8 |
| 9 | 48.4 | 36.3 | 39.3 | 36.9 | 34.9 | 34.9 | 31.5 | 27.5 | 30.1 | 26.2 | 23.3 | | | | | 9 |
| 10 | 40.0 | 33.4 | 36.8 | 34.3 | 32.7 | 32.7 | 29.5 | 25.8 | 28.4 | 24.9 | 21.9 | 24.3 | 21.0 | | | 10 |
| 12 | 29.0 | 28.9 | 28.4 | 28.9 | 29.3 | 28.3 | 25.9 | 22.8 | 25.6 | 22.3 | 19.5 | 22.5 | 19.0 | 19.0 | 15.9 | 12 |
| 14 | 22.2 | 22.7 | 21.6 | 22.1 | 23.0 | 21.6 | 22.2 | 20.6 | 21.8 | 20.1 | 17.7 | 21.5 | 17.1 | 18.0 | 15.9 | 14 |
| 16 | 17.5 | 18.0 | 17.0 | 17.4 | 18.3 | 16.9 | 17.6 | 18.6 | 17.1 | 18.0 | 16.1 | 17.5 | 15.7 | 17.0 | 15.1 | 16 |
| 18 | 14.2 | 14.6 | 13.6 | 14.0 | 14.9 | 13.6 | 14.2 | 15.2 | 13.8 | 14.6 | 14.6 | 14.1 | 14.5 | 14.6 | 14.2 | 18 |
| 20 | 11.6 | 12.0 | 11.1 | 11.5 | 12.3 | 11.0 | 11.6 | 12.6 | 11.2 | 12.0 | 12.7 | 11.6 | 12.5 | 12.1 | 12.1 | 20 |
| 22 | 9.6 | 10.0 | 9.1 | 9.4 | 10.3 | 9.0 | 9.6 | 10.6 | 9.2 | 10.0 | 10.6 | 9.6 | 10.4 | 10.0 | 10.1 | 22 |
| 24 | 7.9 | 8.3 | 7.5 | 7.8 | 8.6 | 7.4 | 8.0 | 8.9 | 7.6 | 8.3 | 9.0 | 7.9 | 8.8 | 8.4 | 8.4 | 24 |
| 26 | 6.6 | 7.0 | 6.1 | 6.5 | 7.3 | 6.1 | 6.6 | 7.6 | 6.2 | 7.0 | 7.6 | 6.6 | 7.4 | 7.1 | 7.1 | 26 |
| 28 | 5.5 | 5.9 | 5.0 | 5.4 | 6.1 | 4.9 | 5.5 | 6.5 | 5.1 | 5.9 | 6.5 | 5.5 | 6.3 | 5.9 | 6.0 | 28 |
| 30 | 4.5 | 4.9 | 4.1 | 4.4 | 5.2 | 4.0 | 4.6 | 5.5 | 4.2 | 4.9 | 5.5 | 4.5 | 5.4 | 5.0 | 5.0 | 30 |
| 32 | 3.7 | 4.1 | 3.3 | 3.6 | 4.4 | 3.2 | 3.7 | 4.7 | 3.4 | 4.1 | 4.7 | 3.7 | 4.5 | 4.1 | 4.2 | 32 |
| 34 | | | 2.5 | 2.9 | 3.6 | 2.5 | 3.0 | 3.9 | 2.7 | 3.4 | 4.0 | 3.0 | 3.8 | 3.4 | 3.5 | 34 |
| 36 | | | 1.9 | 2.2 | 3.0 | 1.9 | 2.4 | 3.3 | 2.0 | 2.7 | 3.4 | 2.4 | 3.2 | 2.8 | 2.8 | 36 |
| 38 | | | | | | 1.3 | 1.8 | 2.7 | 1.5 | 2.2 | 2.8 | 1.8 | 2.6 | 2.2 | 2.3 | 38 |
| 40 | | | | | | | 1.4 | 2.3 | 1.0 | 1.7 | 2.3 | 1.3 | 2.1 | 1.8 | 1.8 | 40 |
| 42 | | | | | | | | | | 1.2 | 1.9 | | 1.7 | 1.3 | 1.4 | 42 |
| 44 | | | | | | | | | | | 1.4 | | 1.3 | | 1.0 | 44 |
| 46 | | | | | | | | | | | | | | | | 46 |
| 48 | | | | | | | | | | | | | | | | 48 |
| 50 | | | | | | | | | | | | | | | | 50 |
| 52 | | | | | | | | | | | | | | | | 52 |
| 54 | | | | | | | | | | | | | | | | 54 |
| 56 | | | | | | | | | | | | | | | | 56 |
| 58 | | | | | | | | | | | | | | | | 58 |
| 60 | | | | | | | | | | | | | | | | 60 |
| 62 | | | | | | | | | | | | | | | | 62 |
| 64 | | | | | | | | | | | | | | | | 64 |
| 66 | | | | | | | | | | | | | | | | 66 |
| Number of lines | 4 | 4 | 4 | 4 | 4 | 3 | 3 | 3 | 3 | 3 | 3 | 3 | 3 | 2 | 2 | Number of lines |
| II | 46 | 0 | 92 | 46 | 46 | 92 | 46 | 46 | 92 | 46 | 46 | 92 | 46 | 92 | 100 | II |
| III | 46 | 92 | 46 | 92 | 46 | 92 | 92 | 46 | 92 | 92 | 46 | 92 | 92 | 92 | 100 | III |
| IV | 46 | 46 | 46 | 46 | 46 | 46 | 92 | 46 | 92 | 92 | 92 | 92 | 92 | 92 | 100 | IV |
| V | 46 | 46 | 46 | 46 | 46 | 46 | 46 | 92 | 46 | 92 | 92 | 92 | 92 | 92 | 100 | V |
| VI | 46 | 46 | 46 | 46 | 92 | 46 | 46 | 92 | 46 | 46 | 92 | 46 | 92 | 92 | 100 | VI |

**STC1600 TRUCK CRANE
LOAD CHART**
Prerequisites:

- ① Boom operation conditions (fully extended boom length), min length is 13.4m and max. length is 62m.
- ② The span of outriggers is 7.8x8.0m.
- ③ 360° working condition is applied.
- ④ Counterweight is 10T.

| Range (m) | Main boom | | | | | | | | | | | | | | Range (m) |
|-----------------|-----------|-------|-------|------|-------|-------|------|------|------|------|------|------|------|------|-----------------|
| | 13.4 | 17.8 | 17.8 | 17.8 | 22.3 | 22.3 | 22.3 | 26.8 | 26.8 | 26.8 | 31.3 | 31.3 | 31.3 | 35.7 | |
| 3 | 130.0 | | | | | | | | | | | | | | 3 |
| 3.5 | 120.0 | 120.0 | 120.0 | 63.7 | | | | | | | | | | | 3.5 |
| 4 | 110.0 | 105.0 | 105.0 | 59.7 | 105.0 | 105.0 | 69.8 | | | | | | | | 4 |
| 4.5 | 96.0 | 95.0 | 95.0 | 56.9 | 95.0 | 95.0 | 66.0 | 90.0 | 65.1 | 62.3 | | | | | 4.5 |
| 5 | 85.0 | 84.0 | 84.0 | 54.3 | 85.0 | 85.0 | 62.9 | 84.0 | 61.0 | 59.3 | 67.0 | 80.0 | 70.0 | | 5 |
| 6 | 75.0 | 74.0 | 74.0 | 49.2 | 73.0 | 73.0 | 58.0 | 73.0 | 57.3 | 57.7 | 64.6 | 80.0 | 62.4 | 63.5 | 6 |
| 7 | 61.2 | 60.2 | 61.6 | 45.3 | 60.7 | 62.8 | 52.5 | 61.8 | 50.1 | 51.4 | 56.8 | 63.3 | 56.2 | 56.6 | 7 |
| 8 | 46.0 | 45.1 | 46.3 | 41.8 | 45.5 | 47.4 | 47.6 | 46.5 | 43.8 | 44.9 | 46.6 | 47.8 | 50.1 | 47.1 | 8 |
| 9 | 36.2 | 35.4 | 36.5 | 39.2 | 35.8 | 37.5 | 40.3 | 36.7 | 37.5 | 40.5 | 36.8 | 37.9 | 40.0 | 37.2 | 9 |
| 10 | 29.3 | 28.6 | 29.7 | 32.2 | 29.0 | 30.6 | 33.2 | 29.9 | 30.6 | 33.4 | 29.9 | 30.9 | 32.9 | 30.3 | 10 |
| 12 | | 19.8 | 20.7 | 23.0 | 20.1 | 21.6 | 24.0 | 20.9 | 21.6 | 24.1 | 21.0 | 21.9 | 23.7 | 21.4 | 12 |
| 14 | | 13.7 | 14.7 | 17.1 | 14.1 | 15.7 | 18.1 | 15.0 | 15.6 | 18.3 | 15.1 | 16.0 | 17.9 | 15.4 | 14 |
| 16 | | | | | 10.1 | 11.5 | 13.9 | 10.9 | 11.5 | 14.0 | 11.0 | 11.9 | 13.7 | 11.4 | 16 |
| 18 | | | | | 7.3 | 8.6 | 10.9 | 8.0 | 8.6 | 11.0 | 8.1 | 9.0 | 10.7 | 8.5 | 18 |
| 20 | | | | | | | | 5.9 | 6.5 | 8.8 | 6.0 | 6.8 | 8.4 | 6.3 | 20 |
| 22 | | | | | | | | 4.2 | 4.8 | 7.1 | 4.3 | 5.1 | 6.7 | 4.7 | 22 |
| 24 | | | | | | | | | | | 3.0 | 3.8 | 5.4 | 3.3 | 24 |
| 26 | | | | | | | | | | | 1.9 | 2.7 | 4.2 | 2.3 | 26 |
| 28 | | | | | | | | | | | | | | 1.4 | 28 |
| 30 | | | | | | | | | | | | | | | 30 |
| 32 | | | | | | | | | | | | | | | 32 |
| 34 | | | | | | | | | | | | | | | 34 |
| 36 | | | | | | | | | | | | | | | 36 |
| 38 | | | | | | | | | | | | | | | 38 |
| 40 | | | | | | | | | | | | | | | 40 |
| 42 | | | | | | | | | | | | | | | 42 |
| 44 | | | | | | | | | | | | | | | 44 |
| 46 | | | | | | | | | | | | | | | 46 |
| 48 | | | | | | | | | | | | | | | 48 |
| 50 | | | | | | | | | | | | | | | 50 |
| 52 | | | | | | | | | | | | | | | 52 |
| 54 | | | | | | | | | | | | | | | 54 |
| 56 | | | | | | | | | | | | | | | 56 |
| 58 | | | | | | | | | | | | | | | 58 |
| 60 | | | | | | | | | | | | | | | 60 |
| 62 | | | | | | | | | | | | | | | 62 |
| 64 | | | | | | | | | | | | | | | 64 |
| 66 | | | | | | | | | | | | | | | 66 |
| Number of lines | 14 | 12 | 12 | 12 | 9 | 9 | 9 | 8 | 8 | 8 | 6 | 6 | 6 | 5 | Number of lines |
| II | 0 | 46 | 0 | 0 | 46 | 0 | 0 | 46 | 0 | 0 | 46 | 46 | 0 | 92 | II |
| III | 0 | 0 | 46 | 0 | 46 | 46 | 0 | 46 | 92 | 0 | 92 | 46 | 46 | 46 | III |
| IV | 0 | 0 | 0 | 0 | 0 | 46 | 0 | 46 | 46 | 46 | 46 | 46 | 46 | 46 | IV |
| V | 0 | 0 | 0 | 0 | 0 | 0 | 46 | 0 | 0 | 46 | 0 | 46 | 46 | 46 | V |
| VI | 0 | 0 | 0 | 46 | 0 | 0 | 46 | 0 | 0 | 46 | 0 | 0 | 46 | 0 | VI |

Prerequisites:

- ① Boom operation conditions (fully extended boom length), min length is 13.4m and max. length is 62m.
- ② The span of outriggers is 7.8x8.0m.
- ③ 360° working condition is applied.
- ④ Counterweight is 10T.

| Range (m) | Main boom | | | | | | | | | | | | | | | Range (m) |
|-----------------|-----------|------|------|------|------|------|------|------|------|------|------|------|------|------|------|-----------------|
| | 35.7 | 35.7 | 40.2 | 40.2 | 40.2 | 44.7 | 44.7 | 44.7 | 49.2 | 49.2 | 49.2 | 53.6 | 53.6 | 58.1 | 62 | |
| 3 | | | | | | | | | | | | | | | | 3 |
| 3.5 | | | | | | | | | | | | | | | | 3.5 |
| 4 | | | | | | | | | | | | | | | | 4 |
| 4.5 | | | | | | | | | | | | | | | | 4.5 |
| 5 | | | | | | | | | | | | | | | | 5 |
| 6 | 62.7 | 47.9 | | | | | | | | | | | | | | 6 |
| 7 | 60.2 | 43.4 | 46.2 | 43.1 | 39.7 | | | | | | | | | | | 7 |
| 8 | 49.2 | 39.3 | 42.6 | 39.7 | 37.3 | 37.3 | 33.6 | 29.3 | | | | | | | | 8 |
| 9 | 39.1 | 36.3 | 38.4 | 36.9 | 34.9 | 34.9 | 31.5 | 27.5 | 30.1 | 26.2 | 23.3 | | | | | 9 |
| 10 | 32.1 | 32.6 | 31.4 | 31.9 | 32.7 | 31.3 | 29.5 | 25.8 | 28.4 | 24.9 | 21.9 | 24.3 | 21.0 | | | 10 |
| 12 | 23.0 | 23.5 | 22.4 | 22.8 | 23.8 | 22.3 | 23.0 | 22.8 | 22.5 | 22.3 | 19.5 | 22.5 | 19.0 | 19.0 | 15.9 | 12 |
| 14 | 17.1 | 17.6 | 16.5 | 16.9 | 17.9 | 16.4 | 17.1 | 18.3 | 16.6 | 17.6 | 17.7 | 17.1 | 17.1 | 17.6 | 15.9 | 14 |
| 16 | 12.9 | 13.4 | 12.3 | 12.7 | 13.7 | 12.2 | 12.9 | 14.1 | 12.5 | 13.4 | 14.1 | 12.9 | 13.9 | 13.4 | 13.5 | 16 |
| 18 | 10.0 | 10.4 | 9.4 | 9.8 | 10.7 | 9.3 | 10.0 | 11.1 | 9.5 | 10.4 | 11.1 | 9.9 | 10.9 | 10.5 | 10.5 | 18 |
| 20 | 7.8 | 8.2 | 7.2 | 7.6 | 8.5 | 7.1 | 7.8 | 8.8 | 7.4 | 8.2 | 8.9 | 7.7 | 8.7 | 8.2 | 8.3 | 20 |
| 22 | 6.1 | 6.5 | 5.5 | 5.9 | 6.8 | 5.5 | 6.1 | 7.1 | 5.7 | 6.5 | 7.2 | 6.0 | 7.0 | 6.5 | 6.6 | 22 |
| 24 | 4.7 | 5.1 | 4.2 | 4.6 | 5.4 | 4.1 | 4.7 | 5.7 | 4.3 | 5.1 | 5.8 | 4.7 | 5.6 | 5.2 | 5.2 | 24 |
| 26 | 3.6 | 4.0 | 3.1 | 3.5 | 4.3 | 3.0 | 3.6 | 4.6 | 3.2 | 4.0 | 4.7 | 3.6 | 4.5 | 4.1 | 4.1 | 26 |
| 28 | 2.7 | 3.1 | 2.2 | 2.6 | 3.4 | 2.1 | 2.7 | 3.7 | 2.3 | 3.1 | 3.7 | 2.7 | 3.6 | 3.1 | 3.2 | 28 |
| 30 | 1.9 | 2.3 | 1.4 | 1.8 | 2.6 | 1.4 | 2.0 | 2.9 | 1.6 | 2.3 | 3.0 | 1.9 | 2.8 | 2.4 | 2.4 | 30 |
| 32 | 1.2 | 1.6 | | 1.1 | 1.9 | | 1.3 | 2.2 | | 1.6 | 2.3 | 1.3 | 2.1 | 1.7 | 1.8 | 32 |
| 34 | | | | | 1.3 | | | 1.7 | | 1.1 | 1.7 | | 1.5 | 1.1 | 1.2 | 34 |
| 36 | | | | | | | | 1.2 | | | 1.2 | | 1.0 | | | 36 |
| 38 | | | | | | | | | | | | | | | | 38 |
| 40 | | | | | | | | | | | | | | | | 40 |
| 42 | | | | | | | | | | | | | | | | 42 |
| 44 | | | | | | | | | | | | | | | | 44 |
| 46 | | | | | | | | | | | | | | | | 46 |
| 48 | | | | | | | | | | | | | | | | 48 |
| 50 | | | | | | | | | | | | | | | | 50 |
| 52 | | | | | | | | | | | | | | | | 52 |
| 54 | | | | | | | | | | | | | | | | 54 |
| 56 | | | | | | | | | | | | | | | | 56 |
| 58 | | | | | | | | | | | | | | | | 58 |
| 60 | | | | | | | | | | | | | | | | 60 |
| 62 | | | | | | | | | | | | | | | | 62 |
| 64 | | | | | | | | | | | | | | | | 64 |
| 66 | | | | | | | | | | | | | | | | 66 |
| Number of lines | 4 | 4 | 4 | 4 | 4 | 3 | 3 | 3 | 3 | 3 | 3 | 3 | 3 | 2 | 2 | Number of lines |
| II | 46 | 0 | 92 | 46 | 46 | 92 | 46 | 46 | 92 | 46 | 46 | 92 | 46 | 92 | 100 | II |
| III | 46 | 92 | 46 | 92 | 46 | 92 | 92 | 46 | 92 | 92 | 46 | 92 | 92 | 92 | 100 | III |
| IV | 46 | 46 | 46 | 46 | 46 | 46 | 92 | 46 | 92 | 92 | 92 | 92 | 92 | 92 | 100 | IV |
| V | 46 | 46 | 46 | 46 | 46 | 46 | 46 | 92 | 46 | 92 | 92 | 92 | 92 | 92 | 100 | V |
| VI | 46 | 46 | 46 | 46 | 92 | 46 | 46 | 92 | 46 | 46 | 92 | 46 | 92 | 92 | 100 | VI |

**STC1600 TRUCK CRANE
LOAD CHART**
Prerequisites:

- ① Boom operation conditions (fully extended boom length), min length is 13.4m and max. length is 62m.
- ② The span of outriggers is 7.8x8.0m.
- ③ Side and rear working conditions are applied.
- ④ Counterweight is 10T.

| Range (m) | Main boom | | | | | | | | | | | | | | Range (m) |
|-----------------|-----------|-------|-------|------|-------|-------|------|------|------|------|------|------|------|------|-----------------|
| | 13.4 | 17.8 | 17.8 | 17.8 | 22.3 | 22.3 | 22.3 | 26.8 | 26.8 | 26.8 | 31.3 | 31.3 | 31.3 | 35.7 | |
| 3 | 130.0 | | | | | | | | | | | | | | 3 |
| 3.5 | 120.0 | 120.0 | 120.0 | 63.7 | | | | | | | | | | | 3.5 |
| 4 | 110.0 | 105.0 | 105.0 | 59.7 | 105.0 | 105.0 | 69.8 | | | | | | | | 4 |
| 4.5 | 96.0 | 95.0 | 95.0 | 56.9 | 95.0 | 95.0 | 66.0 | 90.0 | 65.1 | 62.3 | | | | | 4.5 |
| 5 | 85.0 | 84.0 | 84.0 | 54.3 | 85.0 | 85.0 | 62.9 | 84.0 | 61.0 | 59.3 | 67.0 | 80.0 | 70.0 | | 5 |
| 6 | 75.0 | 74.0 | 74.0 | 49.2 | 73.0 | 73.0 | 58.0 | 73.0 | 57.3 | 57.7 | 64.6 | 80.0 | 62.4 | 63.5 | 6 |
| 7 | 61.2 | 60.2 | 61.6 | 45.3 | 60.7 | 62.8 | 52.5 | 61.8 | 50.1 | 51.4 | 56.8 | 63.3 | 56.2 | 56.6 | 7 |
| 8 | 46.0 | 45.1 | 46.3 | 41.8 | 45.5 | 47.4 | 47.6 | 46.5 | 43.8 | 44.9 | 46.6 | 47.8 | 50.1 | 47.1 | 8 |
| 9 | 36.2 | 35.4 | 36.5 | 39.2 | 35.8 | 37.5 | 40.3 | 36.7 | 37.5 | 40.5 | 36.8 | 37.9 | 40.0 | 37.2 | 9 |
| 10 | 29.3 | 28.6 | 29.7 | 32.2 | 29.0 | 30.6 | 33.2 | 29.9 | 30.6 | 33.4 | 29.9 | 30.9 | 32.9 | 30.3 | 10 |
| 12 | | 19.8 | 20.7 | 23.0 | 20.1 | 21.6 | 24.0 | 20.9 | 21.6 | 24.1 | 21.0 | 21.9 | 23.7 | 21.4 | 12 |
| 14 | | 14.2 | 15.2 | 17.3 | 14.6 | 16.0 | 18.2 | 15.4 | 16.0 | 18.4 | 15.4 | 16.3 | 18.0 | 15.8 | 14 |
| 16 | | | | | 10.8 | 12.2 | 14.3 | 11.6 | 12.1 | 14.4 | 11.6 | 12.5 | 14.1 | 12.0 | 16 |
| 18 | | | | | 8.1 | 9.4 | 11.5 | 8.8 | 9.4 | 11.6 | 8.9 | 9.7 | 11.3 | 9.2 | 18 |
| 20 | | | | | | | | 6.7 | 7.2 | 9.4 | 6.7 | 7.5 | 9.1 | 7.1 | 20 |
| 22 | | | | | | | | 5.0 | 5.5 | 7.7 | 5.0 | 5.8 | 7.4 | 5.4 | 22 |
| 24 | | | | | | | | | | | 3.7 | 4.4 | 6.0 | 4.0 | 24 |
| 26 | | | | | | | | | | | 2.6 | 3.3 | 4.8 | 2.9 | 26 |
| 28 | | | | | | | | | | | | | | 2.0 | 28 |
| 30 | | | | | | | | | | | | | | 1.2 | 30 |
| 32 | | | | | | | | | | | | | | | 32 |
| 34 | | | | | | | | | | | | | | | 34 |
| 36 | | | | | | | | | | | | | | | 36 |
| 38 | | | | | | | | | | | | | | | 38 |
| 40 | | | | | | | | | | | | | | | 40 |
| 42 | | | | | | | | | | | | | | | 42 |
| 44 | | | | | | | | | | | | | | | 44 |
| 46 | | | | | | | | | | | | | | | 46 |
| 48 | | | | | | | | | | | | | | | 48 |
| 50 | | | | | | | | | | | | | | | 50 |
| 52 | | | | | | | | | | | | | | | 52 |
| 54 | | | | | | | | | | | | | | | 54 |
| 56 | | | | | | | | | | | | | | | 56 |
| 58 | | | | | | | | | | | | | | | 58 |
| 60 | | | | | | | | | | | | | | | 60 |
| 62 | | | | | | | | | | | | | | | 62 |
| 64 | | | | | | | | | | | | | | | 64 |
| 66 | | | | | | | | | | | | | | | 66 |
| Number of lines | 14 | 12 | 12 | 12 | 9 | 9 | 9 | 8 | 8 | 8 | 6 | 6 | 6 | 5 | Number of lines |
| II | 0 | 46 | 0 | 0 | 46 | 0 | 0 | 46 | 0 | 0 | 46 | 46 | 0 | 92 | II |
| III | 0 | 0 | 46 | 0 | 46 | 46 | 0 | 46 | 92 | 0 | 92 | 46 | 46 | 46 | III |
| IV | 0 | 0 | 0 | 0 | 0 | 46 | 0 | 46 | 46 | 46 | 46 | 46 | 46 | 46 | IV |
| V | 0 | 0 | 0 | 0 | 0 | 0 | 46 | 0 | 0 | 46 | 0 | 46 | 46 | 46 | V |
| VI | 0 | 0 | 0 | 46 | 0 | 0 | 46 | 0 | 0 | 46 | 0 | 0 | 46 | 0 | VI |

Prerequisites:

- ① Boom operation conditions (fully extended boom length), min length is 13.4m and max. length is 62m.
- ② The span of outriggers is 7.8x8.0m.
- ③ Side and rear working conditions are applied.
- ④ Counterweight is 10T.

| Range (m) | Main boom | | | | | | | | | | | | | | | Range (m) |
|-----------------|-----------|------|------|------|------|------|------|------|------|------|------|------|------|------|------|-----------------|
| | 35.7 | 35.7 | 40.2 | 40.2 | 40.2 | 44.7 | 44.7 | 44.7 | 49.2 | 49.2 | 49.2 | 53.6 | 53.6 | 58.1 | 62 | |
| 3 | | | | | | | | | | | | | | | | 3 |
| 3.5 | | | | | | | | | | | | | | | | 3.5 |
| 4 | | | | | | | | | | | | | | | | 4 |
| 4.5 | | | | | | | | | | | | | | | | 4.5 |
| 5 | | | | | | | | | | | | | | | | 5 |
| 6 | 62.7 | 47.9 | | | | | | | | | | | | | | 6 |
| 7 | 60.2 | 43.4 | 46.2 | 43.1 | 39.7 | | | | | | | | | | | 7 |
| 8 | 49.2 | 39.3 | 42.6 | 39.7 | 37.3 | 37.3 | 33.6 | 29.3 | | | | | | | | 8 |
| 9 | 39.1 | 36.3 | 38.4 | 36.9 | 34.9 | 34.9 | 31.5 | 27.5 | 30.1 | 26.2 | 23.3 | | | | | 9 |
| 10 | 32.1 | 32.6 | 31.4 | 31.9 | 32.7 | 31.3 | 29.5 | 25.8 | 28.4 | 24.9 | 21.9 | 24.3 | 21.0 | | | 10 |
| 12 | 23.0 | 23.5 | 22.4 | 22.8 | 23.8 | 22.3 | 23.0 | 22.8 | 22.5 | 22.3 | 19.5 | 22.5 | 19.0 | 19.0 | 15.9 | 12 |
| 14 | 17.3 | 17.7 | 16.7 | 17.1 | 18.1 | 16.6 | 17.3 | 18.4 | 16.9 | 17.7 | 17.7 | 17.3 | 17.1 | 17.8 | 15.9 | 14 |
| 16 | 13.4 | 13.8 | 12.9 | 13.3 | 14.1 | 12.8 | 13.4 | 14.5 | 13.0 | 13.8 | 14.5 | 13.4 | 14.3 | 13.9 | 13.9 | 16 |
| 18 | 10.6 | 11.0 | 10.1 | 10.4 | 11.3 | 10.0 | 10.6 | 11.6 | 10.2 | 11.0 | 11.7 | 10.6 | 11.5 | 11.1 | 11.1 | 18 |
| 20 | 8.4 | 8.9 | 7.9 | 8.3 | 9.1 | 7.9 | 8.5 | 9.5 | 8.1 | 8.8 | 9.5 | 8.4 | 9.3 | 8.9 | 9.0 | 20 |
| 22 | 6.7 | 7.1 | 6.2 | 6.6 | 7.4 | 6.1 | 6.8 | 7.8 | 6.3 | 7.1 | 7.8 | 6.7 | 7.6 | 7.2 | 7.2 | 22 |
| 24 | 5.3 | 5.7 | 4.8 | 5.2 | 6.0 | 4.8 | 5.4 | 6.4 | 5.0 | 5.7 | 6.4 | 5.3 | 6.2 | 5.8 | 5.8 | 24 |
| 26 | 4.2 | 4.6 | 3.7 | 4.1 | 4.9 | 3.6 | 4.2 | 5.2 | 3.8 | 4.6 | 5.2 | 4.2 | 5.1 | 4.6 | 4.7 | 26 |
| 28 | 3.2 | 3.6 | 2.8 | 3.1 | 3.9 | 2.7 | 3.3 | 4.2 | 2.9 | 3.6 | 4.3 | 3.2 | 4.1 | 3.7 | 3.7 | 28 |
| 30 | 2.4 | 2.8 | 2.0 | 2.3 | 3.1 | 1.9 | 2.5 | 3.4 | 2.1 | 2.8 | 3.5 | 2.4 | 3.3 | 2.9 | 2.9 | 30 |
| 32 | 1.8 | 2.1 | 1.3 | 1.6 | 2.4 | 1.2 | 1.8 | 2.7 | 1.4 | 2.1 | 2.8 | 1.8 | 2.6 | 2.2 | 2.2 | 32 |
| 34 | | | | 1.0 | 1.8 | | 1.2 | 2.1 | | 1.5 | 2.2 | 1.2 | 2.0 | 1.6 | 1.6 | 34 |
| 36 | | | | | 1.3 | | | 1.6 | | 1.0 | 1.6 | | 1.5 | 1.1 | 1.1 | 36 |
| 38 | | | | | | | | 1.1 | | | 1.2 | | 1.0 | | | 38 |
| 40 | | | | | | | | | | | | | | | | 40 |
| 42 | | | | | | | | | | | | | | | | 42 |
| 44 | | | | | | | | | | | | | | | | 44 |
| 46 | | | | | | | | | | | | | | | | 46 |
| 48 | | | | | | | | | | | | | | | | 48 |
| 50 | | | | | | | | | | | | | | | | 50 |
| 52 | | | | | | | | | | | | | | | | 52 |
| 54 | | | | | | | | | | | | | | | | 54 |
| 56 | | | | | | | | | | | | | | | | 56 |
| 58 | | | | | | | | | | | | | | | | 58 |
| 60 | | | | | | | | | | | | | | | | 60 |
| 62 | | | | | | | | | | | | | | | | 62 |
| 64 | | | | | | | | | | | | | | | | 64 |
| 66 | | | | | | | | | | | | | | | | 66 |
| Number of lines | 4 | 4 | 4 | 4 | 4 | 3 | 3 | 3 | 3 | 3 | 3 | 3 | 3 | 2 | 2 | Number of lines |
| II | 46 | 0 | 92 | 46 | 46 | 92 | 46 | 46 | 92 | 46 | 46 | 92 | 46 | 92 | 100 | II |
| III | 46 | 92 | 46 | 92 | 46 | 92 | 92 | 46 | 92 | 92 | 46 | 92 | 92 | 92 | 100 | III |
| IV | 46 | 46 | 46 | 46 | 46 | 46 | 92 | 46 | 92 | 92 | 92 | 92 | 92 | 92 | 100 | IV |
| V | 46 | 46 | 46 | 46 | 46 | 46 | 46 | 92 | 46 | 92 | 92 | 92 | 92 | 92 | 100 | V |
| VI | 46 | 46 | 46 | 46 | 92 | 46 | 46 | 92 | 46 | 46 | 92 | 46 | 92 | 92 | 100 | VI |

**STC1600 TRUCK CRANE
LOAD CHART**
Prerequisites:

- ① Boom operation conditions (fully extended boom length), min length is 13.4m and max. length is 62m.
- ② The span of outriggers is 7.8x8.0m.
- ③ 360° working condition is applied.
- ④ Counterweight is 0T.

| Range (m) | Main boom | | | | | | | | | | | | | | Range (m) |
|-----------------|-----------|-------|-------|------|-------|-------|------|------|------|------|------|------|------|------|-----------------|
| | 13.4 | 17.8 | 17.8 | 17.8 | 22.3 | 22.3 | 22.3 | 26.8 | 26.8 | 26.8 | 31.3 | 31.3 | 31.3 | 35.7 | |
| 3 | 120.0 | | | | | | | | | | | | | | 3 |
| 3.5 | 115.0 | 115.0 | 115.0 | 63.7 | | | | | | | | | | | 3.5 |
| 4 | 105.0 | 105.0 | 105.0 | 59.7 | 105.0 | 105.0 | 69.8 | | | | | | | | 4 |
| 4.5 | 96.0 | 95.0 | 95.0 | 56.9 | 95.0 | 95.0 | 66.0 | 90.0 | 65.1 | 62.3 | | | | | 4.5 |
| 5 | 85.0 | 84.0 | 84.0 | 54.3 | 85.0 | 85.0 | 62.9 | 84.0 | 61.0 | 59.3 | 67.0 | 80.0 | 70.0 | | 5 |
| 6 | 62.6 | 61.4 | 63.0 | 49.2 | 61.9 | 64.4 | 58.0 | 63.2 | 57.3 | 57.7 | 64.6 | 64.9 | 62.4 | 63.5 | 6 |
| 7 | 42.9 | 41.9 | 43.2 | 45.3 | 42.4 | 44.4 | 47.7 | 43.4 | 44.3 | 47.8 | 43.5 | 44.8 | 47.3 | 44.0 | 7 |
| 8 | 31.7 | 30.9 | 32.0 | 34.8 | 31.3 | 33.1 | 36.0 | 32.2 | 33.0 | 36.1 | 32.3 | 33.4 | 35.7 | 32.8 | 8 |
| 9 | 24.2 | 23.3 | 24.7 | 27.4 | 23.8 | 25.8 | 28.4 | 24.9 | 25.7 | 28.6 | 25.0 | 26.1 | 28.2 | 25.5 | 9 |
| 10 | 18.4 | 17.6 | 18.8 | 21.6 | 18.0 | 19.8 | 22.7 | 19.0 | 19.8 | 22.9 | 19.1 | 20.2 | 22.4 | 19.5 | 10 |
| 12 | | 10.6 | 11.7 | 14.1 | 11.0 | 12.6 | 15.1 | 11.9 | 12.6 | 15.3 | 11.9 | 12.9 | 14.9 | 12.3 | 12 |
| 14 | | 6.5 | 7.5 | 9.7 | 6.9 | 8.3 | 10.7 | 7.7 | 8.3 | 10.8 | 7.8 | 8.7 | 10.5 | 8.1 | 14 |
| 16 | | | | | 4.2 | 5.6 | 7.8 | 5.0 | 5.6 | 7.9 | 5.0 | 5.9 | 7.6 | 5.4 | 16 |
| 18 | | | | | 2.3 | 3.6 | 5.7 | 3.0 | 3.6 | 5.9 | 3.1 | 3.9 | 5.5 | 3.4 | 18 |
| 20 | | | | | | | | 1.6 | 2.1 | 4.3 | 1.7 | 2.4 | 4.0 | 2.0 | 20 |
| 22 | | | | | | | | | 1.0 | 3.1 | | 1.3 | 2.8 | | 22 |
| 24 | | | | | | | | | | | | | 1.9 | | 24 |
| 26 | | | | | | | | | | | | | 1.1 | | 26 |
| 28 | | | | | | | | | | | | | | | 28 |
| 30 | | | | | | | | | | | | | | | 30 |
| 32 | | | | | | | | | | | | | | | 32 |
| 34 | | | | | | | | | | | | | | | 34 |
| 36 | | | | | | | | | | | | | | | 36 |
| 38 | | | | | | | | | | | | | | | 38 |
| 40 | | | | | | | | | | | | | | | 40 |
| 42 | | | | | | | | | | | | | | | 42 |
| 44 | | | | | | | | | | | | | | | 44 |
| 46 | | | | | | | | | | | | | | | 46 |
| 48 | | | | | | | | | | | | | | | 48 |
| 50 | | | | | | | | | | | | | | | 50 |
| 52 | | | | | | | | | | | | | | | 52 |
| 54 | | | | | | | | | | | | | | | 54 |
| 56 | | | | | | | | | | | | | | | 56 |
| 58 | | | | | | | | | | | | | | | 58 |
| 60 | | | | | | | | | | | | | | | 60 |
| 62 | | | | | | | | | | | | | | | 62 |
| 64 | | | | | | | | | | | | | | | 64 |
| 66 | | | | | | | | | | | | | | | 66 |
| Number of lines | 14 | 12 | 12 | 12 | 9 | 9 | 9 | 8 | 8 | 8 | 6 | 6 | 6 | 5 | Number of lines |
| II | 0 | 46 | 0 | 0 | 46 | 0 | 0 | 46 | 0 | 0 | 46 | 46 | 0 | 92 | II |
| III | 0 | 0 | 46 | 0 | 46 | 46 | 0 | 46 | 92 | 0 | 92 | 46 | 46 | 46 | III |
| IV | 0 | 0 | 0 | 0 | 0 | 46 | 0 | 46 | 46 | 46 | 46 | 46 | 46 | 46 | IV |
| V | 0 | 0 | 0 | 0 | 0 | 0 | 46 | 0 | 0 | 46 | 0 | 46 | 46 | 46 | V |
| VI | 0 | 0 | 0 | 46 | 0 | 0 | 46 | 0 | 0 | 46 | 0 | 0 | 46 | 0 | VI |

Prerequisites:

- ① Boom operation conditions (fully extended boom length), min length is 13.4m and max. length is 62m.
- ② The span of outriggers is 7.8x8.0m.
- ③ 360° working condition is applied.
- ④ Counterweight is 0T.

| Range (m) | Main boom | | | | | | | | | | | | | | | Range (m) |
|-----------------|-----------|------|------|------|------|------|------|------|------|------|------|------|------|------|------|-----------------|
| | 35.7 | 35.7 | 40.2 | 40.2 | 40.2 | 44.7 | 44.7 | 44.7 | 49.2 | 49.2 | 49.2 | 53.6 | 53.6 | 58.1 | 62 | |
| 3 | | | | | | | | | | | | | | | | 3 |
| 3.5 | | | | | | | | | | | | | | | | 3.5 |
| 4 | | | | | | | | | | | | | | | | 4 |
| 4.5 | | | | | | | | | | | | | | | | 4.5 |
| 5 | | | | | | | | | | | | | | | | 5 |
| 6 | 62.7 | 47.9 | | | | | | | | | | | | | | 6 |
| 7 | 46.2 | 43.4 | 46.2 | 43.1 | 39.7 | | | | | | | | | | | 7 |
| 8 | 34.7 | 35.3 | 34.0 | 34.5 | 37.3 | 33.9 | 33.6 | 29.3 | | | | | | | | 8 |
| 9 | 27.3 | 27.8 | 26.6 | 27.1 | 28.2 | 26.5 | 27.3 | 27.5 | 26.8 | 26.2 | 23.3 | | | | | 9 |
| 10 | 21.5 | 22.1 | 20.7 | 21.3 | 22.5 | 20.6 | 21.5 | 22.9 | 20.9 | 22.0 | 21.9 | 21.4 | 21.0 | | | 10 |
| 12 | 14.0 | 14.6 | 13.4 | 13.9 | 14.9 | 13.3 | 14.1 | 15.3 | 13.5 | 14.5 | 15.4 | 14.0 | 15.1 | 14.6 | 14.7 | 12 |
| 14 | 9.7 | 10.2 | 9.1 | 9.5 | 10.5 | 9.0 | 9.7 | 10.9 | 9.2 | 10.1 | 10.9 | 9.7 | 10.7 | 10.2 | 10.3 | 14 |
| 16 | 6.9 | 7.3 | 6.3 | 6.7 | 7.6 | 6.2 | 6.9 | 8.0 | 6.4 | 7.3 | 8.0 | 6.8 | 7.8 | 7.4 | 7.4 | 16 |
| 18 | 4.8 | 5.3 | 4.3 | 4.7 | 5.6 | 4.2 | 4.9 | 5.9 | 4.4 | 5.3 | 6.0 | 4.8 | 5.8 | 5.3 | 5.4 | 18 |
| 20 | 3.4 | 3.8 | 2.8 | 3.2 | 4.0 | 2.8 | 3.4 | 4.4 | 3.0 | 3.7 | 4.4 | 3.3 | 4.2 | 3.8 | 3.9 | 20 |
| 22 | 2.2 | 2.6 | 1.7 | 2.1 | 2.9 | 1.6 | 2.2 | 3.2 | 1.8 | 2.6 | 3.2 | 2.2 | 3.1 | 2.6 | 2.7 | 22 |
| 24 | 1.3 | 1.7 | | 1.1 | 1.9 | | 1.3 | 2.3 | | 1.7 | 2.3 | 1.3 | 2.1 | 1.7 | 1.8 | 24 |
| 26 | | | | | 1.2 | | | 1.5 | | | 1.5 | | 1.4 | 1.0 | 1.0 | 26 |
| 28 | | | | | | | | | | | | | | | | 28 |
| 30 | | | | | | | | | | | | | | | | 30 |
| 32 | | | | | | | | | | | | | | | | 32 |
| 34 | | | | | | | | | | | | | | | | 34 |
| 36 | | | | | | | | | | | | | | | | 36 |
| 38 | | | | | | | | | | | | | | | | 38 |
| 40 | | | | | | | | | | | | | | | | 40 |
| 42 | | | | | | | | | | | | | | | | 42 |
| 44 | | | | | | | | | | | | | | | | 44 |
| 46 | | | | | | | | | | | | | | | | 46 |
| 48 | | | | | | | | | | | | | | | | 48 |
| 50 | | | | | | | | | | | | | | | | 50 |
| 52 | | | | | | | | | | | | | | | | 52 |
| 54 | | | | | | | | | | | | | | | | 54 |
| 56 | | | | | | | | | | | | | | | | 56 |
| 58 | | | | | | | | | | | | | | | | 58 |
| 60 | | | | | | | | | | | | | | | | 60 |
| 62 | | | | | | | | | | | | | | | | 62 |
| 64 | | | | | | | | | | | | | | | | 64 |
| 66 | | | | | | | | | | | | | | | | 66 |
| Number of lines | 4 | 4 | 4 | 4 | 4 | 3 | 3 | 3 | 3 | 3 | 3 | 3 | 3 | 2 | 2 | Number of lines |
| II | 46 | 0 | 92 | 46 | 46 | 92 | 46 | 46 | 92 | 46 | 46 | 92 | 46 | 92 | 100 | II |
| III | 46 | 92 | 46 | 92 | 46 | 92 | 92 | 46 | 92 | 92 | 46 | 92 | 92 | 92 | 100 | III |
| IV | 46 | 46 | 46 | 46 | 46 | 46 | 92 | 46 | 92 | 92 | 92 | 92 | 92 | 92 | 100 | IV |
| V | 46 | 46 | 46 | 46 | 46 | 46 | 46 | 92 | 46 | 92 | 92 | 92 | 92 | 92 | 100 | V |
| VI | 46 | 46 | 46 | 46 | 92 | 46 | 46 | 92 | 46 | 46 | 92 | 46 | 92 | 92 | 100 | VI |

**STC1600 TRUCK CRANE
LOAD CHART**
Prerequisites:

- ① Boom operation conditions (fully extended boom length), min length is 13.4m and max. length is 62m.
- ② The span of outriggers is 7.8x8.0m.
- ③ Side and rear working conditions are applied.
- ④ Counterweight is 0T.

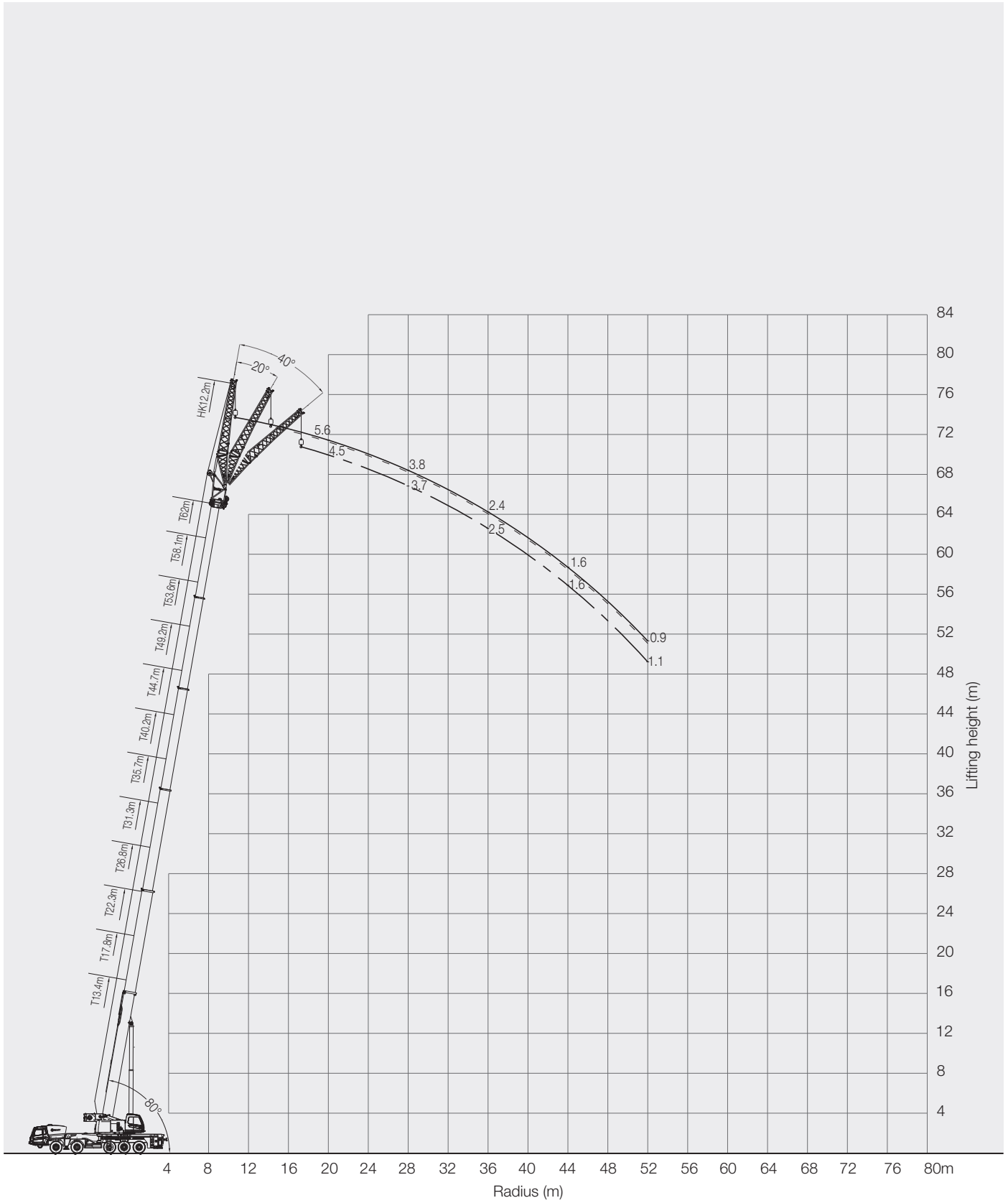
| Range (m) | Main boom | | | | | | | | | | | | | | Range (m) |
|-----------------|-----------|-------|-------|------|-------|-------|------|------|------|------|------|------|------|------|-----------------|
| | 13.4 | 17.8 | 17.8 | 17.8 | 22.3 | 22.3 | 22.3 | 26.8 | 26.8 | 26.8 | 31.3 | 31.3 | 31.3 | 35.7 | |
| 3 | 120.0 | | | | | | | | | | | | | | 3 |
| 3.5 | 115.0 | 115.0 | 115.0 | 63.7 | | | | | | | | | | | 3.5 |
| 4 | 105.0 | 105.0 | 105.0 | 59.7 | 105.0 | 105.0 | 69.8 | | | | | | | | 4 |
| 4.5 | 96.0 | 95.0 | 95.0 | 56.9 | 95.0 | 95.0 | 66.0 | 90.0 | 65.1 | 62.3 | | | | | 4.5 |
| 5 | 85.0 | 84.0 | 84.0 | 54.3 | 85.0 | 85.0 | 62.9 | 84.0 | 61.0 | 59.3 | 67.0 | 80.0 | 70.0 | | 5 |
| 6 | 62.6 | 61.4 | 63.0 | 49.2 | 61.9 | 64.4 | 58.0 | 63.2 | 57.3 | 57.7 | 64.6 | 64.9 | 62.4 | 63.5 | 6 |
| 7 | 42.9 | 41.9 | 43.2 | 45.3 | 42.4 | 44.4 | 47.7 | 43.4 | 44.3 | 47.8 | 43.5 | 44.8 | 47.3 | 44.0 | 7 |
| 8 | 31.7 | 30.9 | 32.0 | 34.8 | 31.3 | 33.1 | 36.0 | 32.2 | 33.0 | 36.1 | 32.3 | 33.4 | 35.7 | 32.8 | 8 |
| 9 | 24.5 | 23.8 | 24.9 | 27.4 | 24.2 | 25.8 | 28.4 | 25.0 | 25.8 | 28.6 | 25.1 | 26.1 | 28.2 | 25.5 | 9 |
| 10 | 19.5 | 18.8 | 19.8 | 22.2 | 19.2 | 20.7 | 23.2 | 20.0 | 20.7 | 23.4 | 20.1 | 21.0 | 22.9 | 20.5 | 10 |
| 12 | | 12.2 | 13.2 | 15.5 | 12.5 | 14.0 | 16.4 | 13.3 | 14.0 | 16.5 | 13.4 | 14.3 | 16.1 | 13.8 | 12 |
| 14 | | 7.9 | 8.9 | 11.0 | 8.3 | 9.7 | 11.9 | 9.1 | 9.7 | 12.1 | 9.1 | 10.0 | 11.7 | 9.5 | 14 |
| 16 | | | | | 5.5 | 6.8 | 8.9 | 6.2 | 6.8 | 9.1 | 6.3 | 7.1 | 8.7 | 6.6 | 16 |
| 18 | | | | | 3.4 | 4.7 | 6.8 | 4.2 | 4.7 | 6.9 | 4.2 | 5.0 | 6.6 | 4.5 | 18 |
| 20 | | | | | | | | 2.6 | 3.2 | 5.3 | 2.7 | 3.4 | 5.0 | 3.0 | 20 |
| 22 | | | | | | | | 1.4 | 1.9 | 4.0 | 1.5 | 2.2 | 3.7 | 1.8 | 22 |
| 24 | | | | | | | | | | | | 1.3 | 2.7 | | 24 |
| 26 | | | | | | | | | | | | | 1.9 | | 26 |
| 28 | | | | | | | | | | | | | | | 28 |
| 30 | | | | | | | | | | | | | | | 30 |
| 32 | | | | | | | | | | | | | | | 32 |
| 34 | | | | | | | | | | | | | | | 34 |
| 36 | | | | | | | | | | | | | | | 36 |
| 38 | | | | | | | | | | | | | | | 38 |
| 40 | | | | | | | | | | | | | | | 40 |
| 42 | | | | | | | | | | | | | | | 42 |
| 44 | | | | | | | | | | | | | | | 44 |
| 46 | | | | | | | | | | | | | | | 46 |
| 48 | | | | | | | | | | | | | | | 48 |
| 50 | | | | | | | | | | | | | | | 50 |
| 52 | | | | | | | | | | | | | | | 52 |
| 54 | | | | | | | | | | | | | | | 54 |
| 56 | | | | | | | | | | | | | | | 56 |
| 58 | | | | | | | | | | | | | | | 58 |
| 60 | | | | | | | | | | | | | | | 60 |
| 62 | | | | | | | | | | | | | | | 62 |
| 64 | | | | | | | | | | | | | | | 64 |
| 66 | | | | | | | | | | | | | | | 66 |
| Number of lines | 14 | 12 | 12 | 12 | 9 | 9 | 9 | 8 | 8 | 8 | 6 | 6 | 6 | 5 | Number of lines |
| II | 0 | 46 | 0 | 0 | 46 | 0 | 0 | 46 | 0 | 0 | 46 | 46 | 0 | 92 | II |
| III | 0 | 0 | 46 | 0 | 46 | 46 | 0 | 46 | 92 | 0 | 92 | 46 | 46 | 46 | III |
| IV | 0 | 0 | 0 | 0 | 0 | 46 | 0 | 46 | 46 | 46 | 46 | 46 | 46 | 46 | IV |
| V | 0 | 0 | 0 | 0 | 0 | 0 | 46 | 0 | 0 | 46 | 0 | 46 | 46 | 46 | V |
| VI | 0 | 0 | 0 | 46 | 0 | 0 | 46 | 0 | 0 | 46 | 0 | 0 | 46 | 0 | VI |

Prerequisites:

- ① Boom operation conditions (fully extended boom length), min length is 13.4m and max. length is 62m.
- ② The span of outriggers is 7.8x8.0m.
- ③ Side and rear working conditions are applied.
- ④ Counterweight is 0T.

| Range (m) | Main boom | | | | | | | | | | | | | | | Range (m) |
|-----------------|-----------|------|------|------|------|------|------|------|------|------|------|------|------|------|------|-----------------|
| | 35.7 | 35.7 | 40.2 | 40.2 | 40.2 | 44.7 | 44.7 | 44.7 | 49.2 | 49.2 | 49.2 | 53.6 | 53.6 | 58.1 | 62 | |
| 3 | | | | | | | | | | | | | | | | 3 |
| 3.5 | | | | | | | | | | | | | | | | 3.5 |
| 4 | | | | | | | | | | | | | | | | 4 |
| 4.5 | | | | | | | | | | | | | | | | 4.5 |
| 5 | | | | | | | | | | | | | | | | 5 |
| 6 | 62.7 | 47.9 | | | | | | | | | | | | | | 6 |
| 7 | 46.2 | 43.4 | 46.2 | 43.1 | 39.7 | | | | | | | | | | | 7 |
| 8 | 34.7 | 35.3 | 34.0 | 34.5 | 37.3 | 33.9 | 33.6 | 29.3 | | | | | | | | 8 |
| 9 | 27.3 | 27.8 | 26.6 | 27.1 | 28.2 | 26.5 | 27.3 | 27.5 | 26.8 | 26.2 | 23.3 | | | | | 9 |
| 10 | 22.1 | 22.6 | 21.5 | 22.0 | 23.0 | 21.4 | 22.2 | 23.4 | 21.7 | 22.6 | 21.9 | 22.1 | 21.0 | | | 10 |
| 12 | 15.4 | 15.9 | 14.8 | 15.2 | 16.2 | 14.7 | 15.4 | 16.6 | 14.9 | 15.8 | 16.6 | 15.4 | 16.4 | 15.9 | 15.9 | 12 |
| 14 | 11.0 | 11.4 | 10.4 | 10.8 | 11.8 | 10.3 | 11.0 | 12.1 | 10.5 | 11.4 | 12.2 | 11.0 | 11.9 | 11.5 | 11.5 | 14 |
| 16 | 8.0 | 8.5 | 7.5 | 7.9 | 8.8 | 7.4 | 8.1 | 9.1 | 7.6 | 8.4 | 9.2 | 8.0 | 8.9 | 8.5 | 8.6 | 16 |
| 18 | 5.9 | 6.3 | 5.4 | 5.8 | 6.6 | 5.3 | 5.9 | 6.9 | 5.5 | 6.3 | 7.0 | 5.9 | 6.8 | 6.4 | 6.4 | 18 |
| 20 | 4.3 | 4.7 | 3.8 | 4.2 | 5.0 | 3.8 | 4.4 | 5.3 | 3.9 | 4.7 | 5.4 | 4.3 | 5.2 | 4.8 | 4.8 | 20 |
| 22 | 3.1 | 3.5 | 2.6 | 3.0 | 3.8 | 2.5 | 3.1 | 4.1 | 2.7 | 3.5 | 4.1 | 3.1 | 3.9 | 3.5 | 3.6 | 22 |
| 24 | 2.1 | 2.5 | 1.6 | 2.0 | 2.8 | 1.6 | 2.1 | 3.1 | 1.7 | 2.5 | 3.1 | 2.1 | 2.9 | 2.5 | 2.6 | 24 |
| 26 | 1.3 | 1.7 | | 1.2 | 1.9 | | 1.3 | 2.2 | | 1.7 | 2.3 | 1.3 | 2.1 | 1.7 | 1.8 | 26 |
| 28 | | 1.0 | | | 1.2 | | | 1.6 | | 1.0 | 1.6 | | 1.4 | 1.0 | 1.1 | 28 |
| 30 | | | | | | | | 1.0 | | | 1.0 | | | | | 30 |
| 32 | | | | | | | | | | | | | | | | 32 |
| 34 | | | | | | | | | | | | | | | | 34 |
| 36 | | | | | | | | | | | | | | | | 36 |
| 38 | | | | | | | | | | | | | | | | 38 |
| 40 | | | | | | | | | | | | | | | | 40 |
| 42 | | | | | | | | | | | | | | | | 42 |
| 44 | | | | | | | | | | | | | | | | 44 |
| 46 | | | | | | | | | | | | | | | | 46 |
| 48 | | | | | | | | | | | | | | | | 48 |
| 50 | | | | | | | | | | | | | | | | 50 |
| 52 | | | | | | | | | | | | | | | | 52 |
| 54 | | | | | | | | | | | | | | | | 54 |
| 56 | | | | | | | | | | | | | | | | 56 |
| 58 | | | | | | | | | | | | | | | | 58 |
| 60 | | | | | | | | | | | | | | | | 60 |
| 62 | | | | | | | | | | | | | | | | 62 |
| 64 | | | | | | | | | | | | | | | | 64 |
| 66 | | | | | | | | | | | | | | | | 66 |
| Number of lines | 4 | 4 | 4 | 4 | 4 | 3 | 3 | 3 | 3 | 3 | 3 | 3 | 3 | 2 | 2 | Number of lines |
| II | 46 | 0 | 92 | 46 | 46 | 92 | 46 | 46 | 92 | 46 | 46 | 92 | 46 | 92 | 100 | II |
| III | 46 | 92 | 46 | 92 | 46 | 92 | 92 | 46 | 92 | 92 | 46 | 92 | 92 | 92 | 100 | III |
| IV | 46 | 46 | 46 | 46 | 46 | 46 | 92 | 46 | 92 | 92 | 92 | 92 | 92 | 92 | 100 | IV |
| V | 46 | 46 | 46 | 46 | 46 | 46 | 46 | 92 | 46 | 92 | 92 | 92 | 92 | 92 | 100 | V |
| VI | 46 | 46 | 46 | 46 | 92 | 46 | 46 | 92 | 46 | 46 | 92 | 46 | 92 | 92 | 100 | VI |

STC1600 Working Ranges

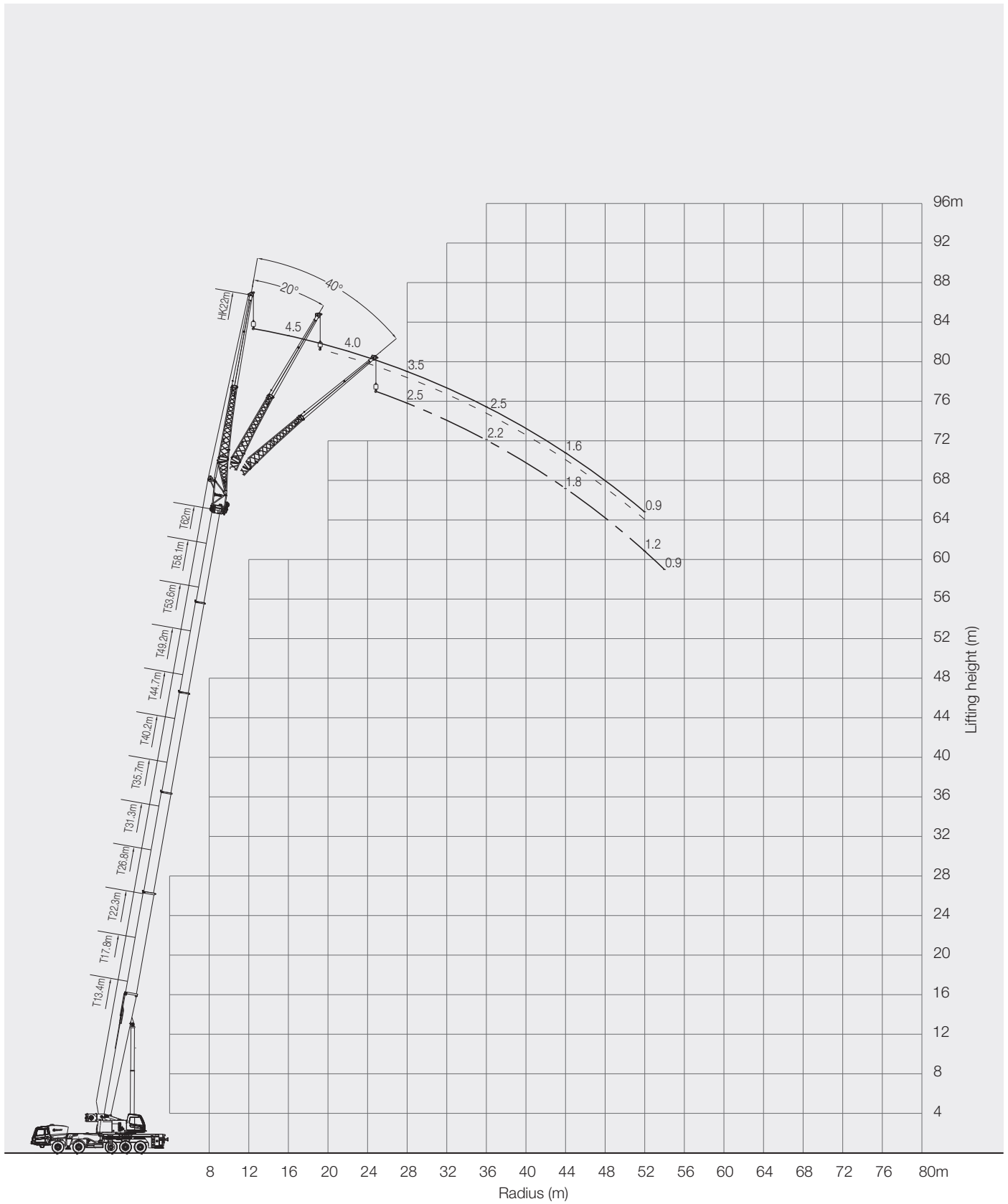


Prerequisites:

- ① Boom operation conditions (fully extended boom + jib), max. length is 62 + 12.2m.
- ② The span of outriggers is 7.8x8.0m.
- ③ 360° working conditions are applied.
- ④ Counterweight is 60T.
- ⑤ Jib offset of 0°, 20°, 40°.

| Range (m) | Main boom | | | | | | | | | | | | | | | Range (m) |
|-----------------|-----------|-----|-----|------|-----|-----|------|-----|-----|------|-----|-----|------|------|------|-----------------|
| | 44.7 | | | 49.2 | | | 53.6 | | | 58.1 | | | 62 | | | |
| | 0° | 20° | 40° | 0° | 20° | 40° | 0° | 20° | 40° | 0° | 20° | 40° | 0° | 20° | 40° | |
| 9 | | | | | | | | | | | | | | | | 9 |
| 10 | 11.0 | | | 10.5 | | | | | | | | | | | | 10 |
| 12 | 10.7 | 8.4 | | 10.3 | | | 9.0 | | | 7.3 | | | | | | 12 |
| 14 | 10.3 | 7.7 | 6.3 | 10.0 | 7.4 | | 9.0 | | | 7.3 | | | 6.5 | | | 14 |
| 16 | 10.0 | 7.1 | 6.0 | 9.7 | 6.9 | 6.1 | 8.5 | 7.0 | | 7.0 | 6.0 | | 6.5 | | | 16 |
| 18 | 9.6 | 6.6 | 5.8 | 8.8 | 6.5 | 5.9 | 7.7 | 6.6 | 5.8 | 6.8 | 5.6 | 5.5 | 6.3 | 5.0 | | 18 |
| 20 | 9.1 | 6.2 | 5.5 | 7.9 | 6.1 | 5.6 | 7.0 | 6.3 | 5.6 | 6.2 | 5.2 | 5.2 | 5.6 | 4.5 | 4.5 | 20 |
| 22 | 8.2 | 5.9 | 5.3 | 7.0 | 5.9 | 5.4 | 6.3 | 6.0 | 5.5 | 5.5 | 5.0 | 4.9 | 5.0 | 4.3 | 4.3 | 22 |
| 24 | 7.5 | 5.6 | 4.9 | 6.3 | 5.7 | 5.1 | 5.7 | 5.6 | 5.3 | 5.0 | 4.7 | 4.7 | 4.4 | 4.1 | 4.1 | 24 |
| 26 | 6.7 | 5.4 | 4.7 | 5.8 | 5.5 | 4.9 | 5.0 | 5.0 | 4.9 | 4.6 | 4.5 | 4.5 | 4.1 | 4.0 | 4.0 | 26 |
| 28 | 6.2 | 5.1 | 4.6 | 5.1 | 5.1 | 4.7 | 4.5 | 4.5 | 4.5 | 4.3 | 4.2 | 4.2 | 3.8 | 3.8 | 3.7 | 28 |
| 30 | 5.7 | 4.9 | 4.5 | 4.7 | 4.7 | 4.5 | 4.2 | 4.2 | 4.2 | 3.8 | 3.8 | 3.8 | 3.4 | 3.4 | 3.4 | 30 |
| 32 | 5.0 | 4.7 | 4.4 | 4.3 | 4.3 | 4.3 | 3.8 | 3.8 | 3.8 | 3.5 | 3.5 | 3.5 | 3.0 | 3.0 | 3.0 | 32 |
| 34 | 4.6 | 4.5 | 4.2 | 3.8 | 3.9 | 3.9 | 3.4 | 3.4 | 3.5 | 3.0 | 3.0 | 3.0 | 2.7 | 2.7 | 2.8 | 34 |
| 36 | 4.3 | 4.3 | 4.1 | 3.5 | 3.6 | 3.6 | 3.0 | 3.0 | 3.2 | 2.8 | 2.8 | 2.9 | 2.4 | 2.5 | 2.5 | 36 |
| 38 | 3.8 | 3.8 | 3.9 | 3.2 | 3.3 | 3.2 | 2.7 | 2.8 | 2.8 | 2.6 | 2.6 | 2.6 | 2.2 | 2.3 | 2.3 | 38 |
| 40 | 3.6 | 3.6 | 3.6 | 2.8 | 2.9 | 2.9 | 2.5 | 2.6 | 2.6 | 2.3 | 2.3 | 2.3 | 2.0 | 2.1 | 2.1 | 40 |
| 42 | 3.3 | 3.4 | 3.4 | 2.6 | 2.7 | 2.6 | 2.3 | 2.3 | 2.3 | 2.1 | 2.1 | 2.1 | 1.7 | 1.9 | 1.9 | 42 |
| 44 | 3.0 | 3.0 | 2.9 | 2.3 | 2.4 | 2.5 | 2.0 | 2.1 | 2.1 | 1.9 | 1.9 | 2.0 | 1.6 | 1.6 | 1.6 | 44 |
| 46 | 2.5 | 2.5 | 2.4 | 2.1 | 2.2 | 2.2 | 1.9 | 1.9 | 1.9 | 1.7 | 1.8 | 1.8 | 1.4 | 1.5 | 1.5 | 46 |
| 48 | 2.0 | 2.0 | 2.2 | 1.9 | 2.0 | 2.0 | 1.6 | 1.7 | 1.7 | 1.6 | 1.6 | 1.6 | 1.3 | 1.3 | 1.4 | 48 |
| 50 | 1.5 | 1.5 | 1.8 | 1.6 | 1.6 | 1.7 | 1.5 | 1.6 | 1.6 | 1.4 | 1.4 | 1.5 | 1.1 | 1.2 | 1.2 | 50 |
| 52 | 1.0 | 1.0 | 1.2 | 1.3 | 1.2 | 1.4 | 1.4 | 1.4 | 1.4 | 1.3 | 1.3 | 1.3 | 0.9 | 0.9 | 1.1 | 52 |
| 54 | | | | 1.0 | 1.0 | | 1.0 | 1.0 | 1.2 | 1.2 | 1.2 | 1.2 | | | | 54 |
| 56 | | | | | | | | | | 0.9 | 1.1 | 1.1 | | | | 56 |
| 58 | | | | | | | | | | | | | | | | 58 |
| 60 | | | | | | | | | | | | | | | | 60 |
| n | 1 | 1 | 1 | 1 | 1 | 1 | 1 | 1 | 1 | 1 | 1 | 1 | 1 | 1 | 1 | n |
| Number of lines | 9 | 9 | 9 | 9 | 9 | 9 | 9 | 9 | 9 | 9 | 9 | 9 | 9 | 9 | 9 | Number of lines |
| II | 0+ | 0+ | 0+ | 0+ | 0+ | 0+ | 46+ | 46+ | 46+ | 9 | 9 | 9 | 1 | 1 | 1 | II |
| III | 92+ | 92+ | 92+ | 92+ | 92+ | 92+ | 92+ | 92+ | 92+ | 92+ | 92+ | 92+ | 1 | 1 | 1 | III |
| IV | 92+ | 92+ | 92+ | 92+ | 92+ | 92+ | 92+ | 92+ | 92+ | 92+ | 92+ | 92+ | 100+ | 100+ | 100+ | IV |
| V | 92+ | 92+ | 92+ | 92+ | 92+ | 92+ | 92+ | 92+ | 92+ | 92+ | 92+ | 92+ | 100+ | 100+ | 100+ | V |
| VI | 46+ | 46+ | 46+ | 92+ | 92+ | 92+ | 92+ | 92+ | 92+ | 92+ | 92+ | 92+ | 100+ | 100+ | 100+ | VI |

STC1600 Working Ranges

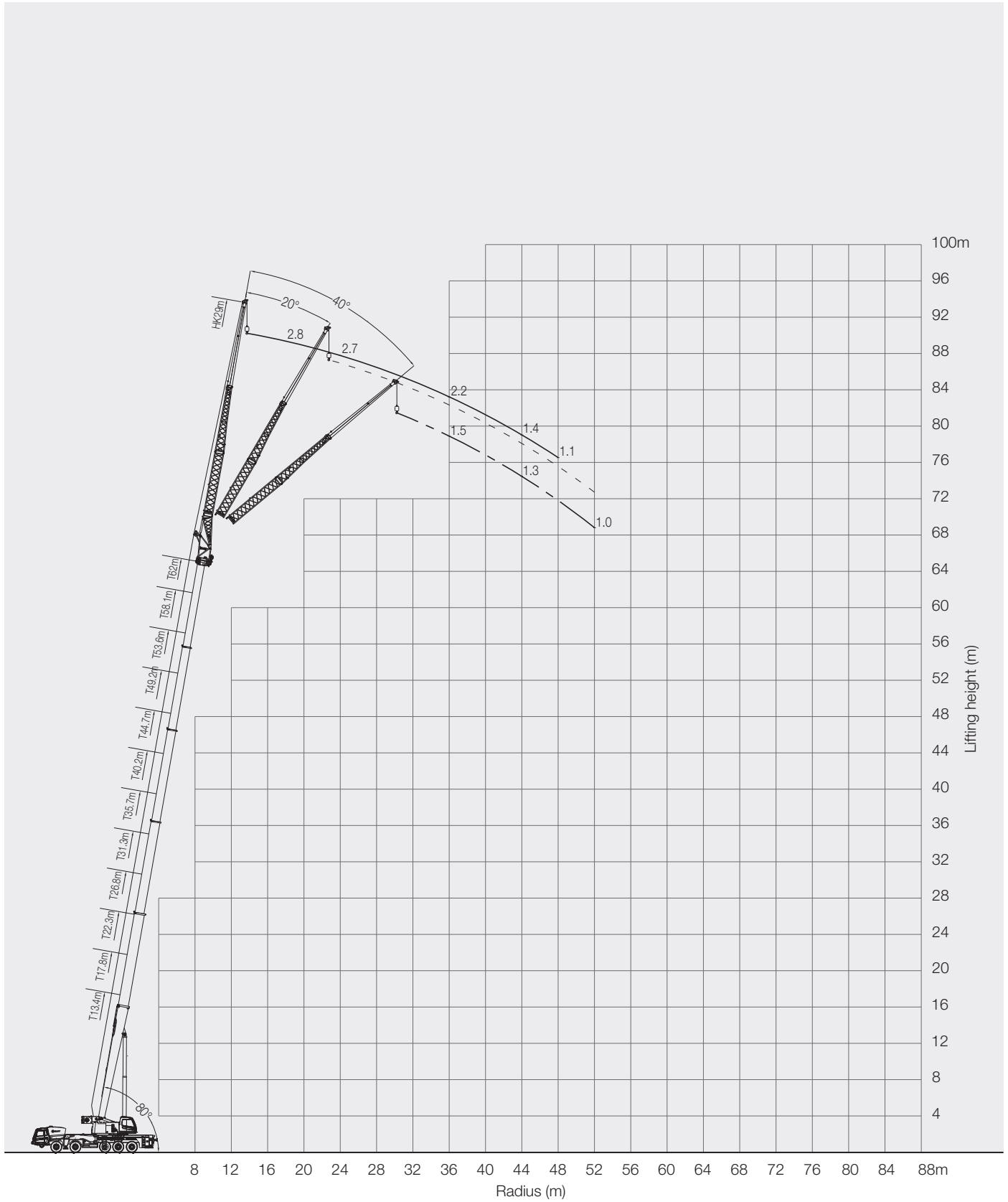


Prerequisites:

- ① Boom operation conditions (fully extended boom + jib), max. length is 62 + 22m.
- ② The span of outriggers is 7.8x8.0m.
- ③ 360° working conditions are applied.
- ④ Counterweight is 60T.
- ⑤ Jib offset of 0°, 20°, 40°.

| Range (m) | Main boom | | | | | | | | | | | | | | | Range (m) |
|-----------------|-----------|-----|-----|------|-----|-----|------|-----|-----|------|-----|-----|------|------|------|-----------------|
| | 44.7 | | | 49.2 | | | 53.6 | | | 58.1 | | | 62 | | | |
| | 0° | 20° | 40° | 0° | 20° | 40° | 0° | 20° | 40° | 0° | 20° | 40° | 0° | 20° | 40° | |
| 9 | | | | | | | | | | | | | | | | 9 |
| 10 | 6.1 | | | | | | | | | | | | | | | 10 |
| 12 | 6.0 | | | 5.8 | | | | | | | | | | | | 12 |
| 14 | 6.0 | | | 5.6 | | | 5.4 | | | 4.8 | | | | | | 14 |
| 16 | 6.0 | 4.2 | | 5.3 | | | 5.1 | | | 4.8 | | | 4.5 | | | 16 |
| 18 | 5.9 | 4.2 | | 5.2 | 4.0 | | 4.9 | 3.8 | | 4.8 | | | 4.5 | | | 18 |
| 20 | 5.5 | 4.2 | 3.2 | 4.9 | 3.9 | 3.2 | 4.6 | 3.8 | | 4.8 | 3.5 | | 4.3 | 3.2 | | 20 |
| 22 | 5.3 | 4.0 | 3.2 | 4.7 | 3.7 | 3.0 | 4.4 | 3.6 | 2.9 | 4.6 | 3.2 | 3.0 | 4.0 | 2.9 | | 22 |
| 24 | 4.9 | 3.7 | 3.0 | 4.4 | 3.5 | 2.9 | 4.4 | 3.4 | 2.8 | 4.1 | 3.0 | 2.8 | 3.9 | 2.8 | 2.6 | 24 |
| 26 | 4.5 | 3.5 | 2.9 | 4.2 | 3.3 | 2.9 | 4.3 | 3.3 | 2.7 | 4.0 | 2.9 | 2.7 | 3.7 | 2.7 | 2.5 | 26 |
| 28 | 4.2 | 3.2 | 2.9 | 4.0 | 3.0 | 2.9 | 4.1 | 3.0 | 2.7 | 3.8 | 2.8 | 2.6 | 3.5 | 2.6 | 2.5 | 28 |
| 30 | 4.0 | 3.0 | 2.8 | 4.0 | 2.8 | 2.8 | 4.0 | 2.7 | 2.6 | 3.6 | 2.7 | 2.6 | 3.3 | 2.5 | 2.4 | 30 |
| 32 | 3.9 | 2.8 | 2.7 | 3.8 | 2.7 | 2.8 | 3.8 | 2.6 | 2.6 | 3.3 | 2.6 | 2.6 | 2.9 | 2.4 | 2.4 | 32 |
| 34 | 3.7 | 2.7 | 2.7 | 3.7 | 2.6 | 2.7 | 3.5 | 2.5 | 2.5 | 3.1 | 2.5 | 2.5 | 2.7 | 2.3 | 2.3 | 34 |
| 36 | 3.6 | 2.6 | 2.6 | 3.6 | 2.5 | 2.7 | 3.2 | 2.4 | 2.4 | 2.8 | 2.4 | 2.5 | 2.5 | 2.3 | 2.2 | 36 |
| 38 | 3.5 | 2.5 | 2.6 | 3.3 | 2.4 | 2.5 | 2.8 | 2.3 | 2.3 | 2.6 | 2.3 | 2.4 | 2.3 | 2.2 | 2.2 | 38 |
| 40 | 3.3 | 2.5 | 2.6 | 2.9 | 2.3 | 2.5 | 2.6 | 2.3 | 2.3 | 2.3 | 2.2 | 2.4 | 2.1 | 2.1 | 2.1 | 40 |
| 42 | 3.0 | 2.4 | 2.5 | 2.8 | 2.2 | 2.5 | 2.3 | 2.2 | 2.3 | 2.1 | 2.2 | 2.3 | 1.8 | 1.9 | 2.0 | 42 |
| 44 | 2.9 | 2.3 | 2.5 | 2.5 | 2.2 | 2.4 | 2.1 | 2.2 | 2.2 | 1.9 | 2.0 | 2.1 | 1.6 | 1.7 | 1.8 | 44 |
| 46 | 2.7 | 2.2 | 2.5 | 2.3 | 2.1 | 2.4 | 2.0 | 2.1 | 2.1 | 1.8 | 1.9 | 1.9 | 1.4 | 1.6 | 1.6 | 46 |
| 48 | 2.6 | 2.2 | 2.4 | 2.0 | 2.1 | 2.2 | 1.8 | 1.9 | 1.9 | 1.6 | 1.6 | 1.7 | 1.3 | 1.4 | 1.5 | 48 |
| 50 | 2.4 | 2.1 | 2.3 | 1.9 | 1.9 | 2.0 | 1.6 | 1.6 | 1.7 | 1.4 | 1.5 | 1.6 | 1.2 | 1.2 | 1.3 | 50 |
| 52 | 2.3 | 2.1 | 2.3 | 1.7 | 1.8 | 1.8 | 1.4 | 1.5 | 1.5 | 1.3 | 1.4 | 1.4 | 0.9 | 1.2 | 1.2 | 52 |
| 54 | 1.9 | 2.1 | 2.1 | 1.5 | 1.6 | 1.6 | 1.3 | 1.4 | 1.4 | 1.2 | 1.2 | 1.3 | | | 0.9 | 54 |
| 56 | 1.4 | 1.7 | 1.9 | 1.4 | 1.4 | 1.5 | 1.2 | 1.2 | 1.2 | 0.9 | 1.1 | 1.2 | | | | 56 |
| 58 | 1.0 | 1.4 | | 1.0 | 1.4 | 1.3 | 0.9 | 1.1 | 1.2 | | | 0.9 | | | | 58 |
| 60 | | 1.0 | | | 1.0 | | | | 0.9 | | | | | | | 60 |
| n | 1 | 1 | 1 | 1 | 1 | 1 | 1 | 1 | 1 | 1 | 1 | 1 | 1 | 1 | 1 | n |
| Number of lines | 9 | 9 | 9 | 9 | 9 | 9 | 9 | 9 | 9 | 9 | 9 | 9 | 9 | 9 | 9 | Number of lines |
| II | 0+ | 0+ | 0+ | 0+ | 0+ | 0+ | 46+ | 46+ | 46+ | 9 | 9 | 9 | 1 | 1 | 1 | II |
| III | 92+ | 92+ | 92+ | 92+ | 92+ | 92+ | 92+ | 92+ | 92+ | 92+ | 92+ | 92+ | 1 | 1 | 1 | III |
| IV | 92+ | 92+ | 92+ | 92+ | 92+ | 92+ | 92+ | 92+ | 92+ | 92+ | 92+ | 92+ | 100+ | 100+ | 100+ | IV |
| V | 92+ | 92+ | 92+ | 92+ | 92+ | 92+ | 92+ | 92+ | 92+ | 92+ | 92+ | 92+ | 100+ | 100+ | 100+ | V |
| VI | 46+ | 46+ | 46+ | 92+ | 92+ | 92+ | 92+ | 92+ | 92+ | 92+ | 92+ | 92+ | 100+ | 100+ | 100+ | VI |

STC1600 Working Ranges

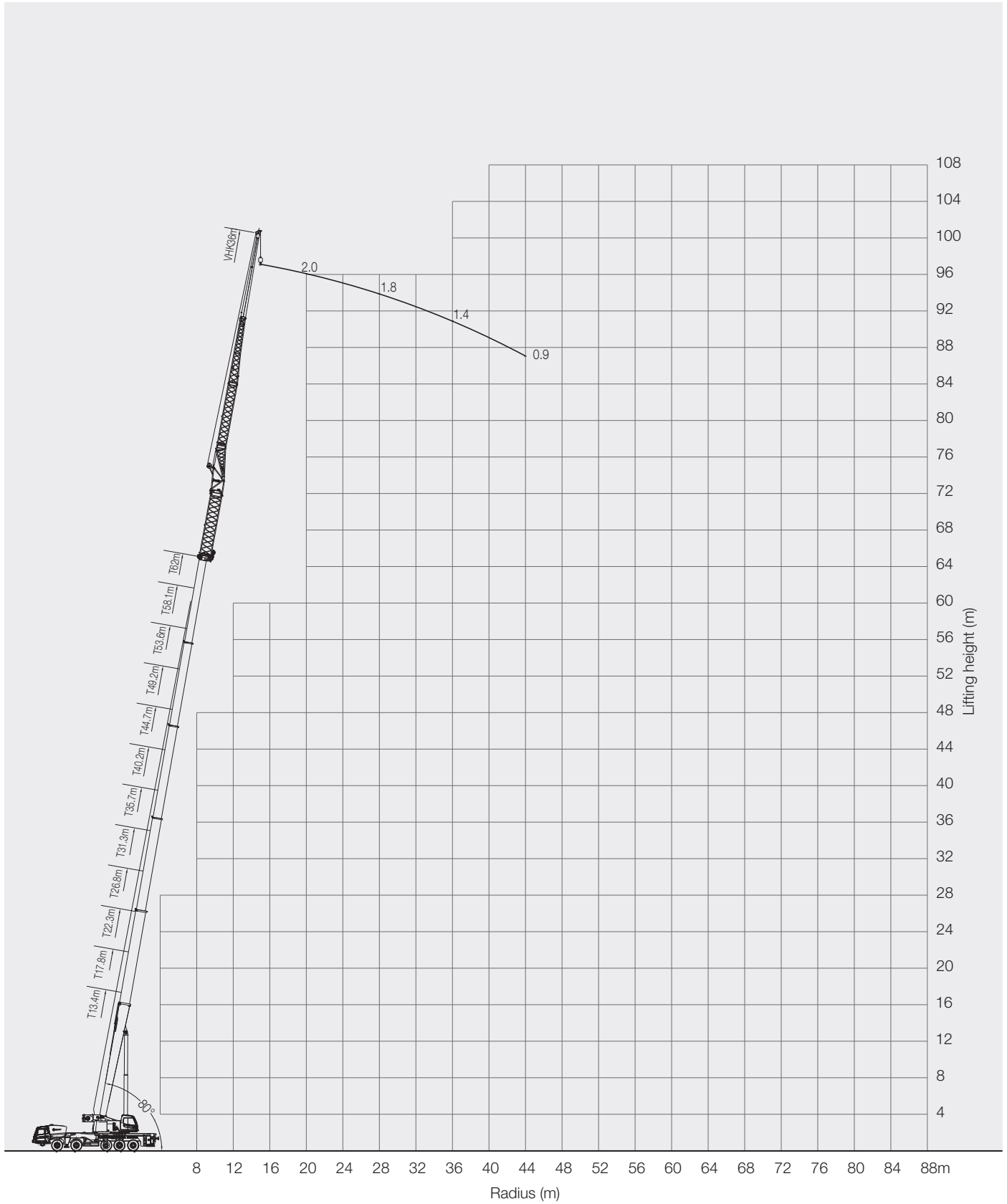


Prerequisites:

- ① Boom operation conditions (fully extended boom + jib), max. length is 62 + 29m.
- ② The span of outriggers is 7.8x8.0m.
- ③ 360° working conditions are applied.
- ④ Counterweight is 60T.
- ⑤ Jib offset of 0°, 20°, 40°.

| Range (m) | Main boom | | | | | | | | | | | | | | | Range (m) |
|-----------------|-----------|-----|-----|------|-----|-----|------|-----|-----|------|-----|-----|------|------|------|-----------------|
| | 44.7 | | | 49.2 | | | 53.6 | | | 58.1 | | | 62 | | | |
| | 0° | 20° | 40° | 0° | 20° | 40° | 0° | 20° | 40° | 0° | 20° | 40° | 0° | 20° | 40° | |
| 9 | | | | | | | | | | | | | | | | 9 |
| 10 | | | | | | | | | | | | | | | | 10 |
| 12 | 4.0 | | | | | | | | | | | | | | | 12 |
| 14 | 3.9 | | | 3.8 | | | 3.5 | | | | | | | | | 14 |
| 16 | 3.8 | | | 3.7 | | | 3.4 | | | 3.2 | | | | | | 16 |
| 18 | 3.6 | | | 3.5 | | | 3.3 | | | 3.2 | | | 2.8 | | | 18 |
| 20 | 3.4 | 2.5 | | 3.4 | | | 3.2 | | | 3.1 | | | 2.8 | | | 20 |
| 22 | 3.2 | 2.5 | | 3.3 | 2.4 | | 3.2 | 2.4 | | 3.1 | | | 2.8 | | | 22 |
| 24 | 2.9 | 2.4 | | 3.0 | 2.4 | | 2.9 | 2.4 | | 2.8 | 2.3 | | 2.7 | 2.2 | | 24 |
| 26 | 2.8 | 2.3 | 1.9 | 2.9 | 2.3 | | 2.8 | 2.3 | | 2.7 | 2.3 | | 2.6 | 2.2 | | 26 |
| 28 | 2.7 | 2.2 | 1.9 | 2.8 | 2.2 | 1.8 | 2.7 | 2.2 | 1.8 | 2.6 | 2.3 | | 2.5 | 2.2 | | 28 |
| 30 | 2.6 | 2.1 | 1.9 | 2.6 | 2.2 | 1.8 | 2.6 | 2.2 | 1.8 | 2.5 | 2.2 | 1.6 | 2.4 | 2.1 | 1.5 | 30 |
| 32 | 2.5 | 2.1 | 1.8 | 2.5 | 2.1 | 1.8 | 2.6 | 2.1 | 1.8 | 2.4 | 2.2 | 1.6 | 2.3 | 2.1 | 1.5 | 32 |
| 34 | 2.4 | 2.0 | 1.7 | 2.4 | 2.1 | 1.8 | 2.5 | 2.1 | 1.8 | 2.4 | 2.1 | 1.6 | 2.3 | 2.0 | 1.5 | 34 |
| 36 | 2.3 | 2.0 | 1.7 | 2.4 | 2.0 | 1.7 | 2.4 | 2.0 | 1.8 | 2.4 | 2.0 | 1.6 | 2.2 | 1.9 | 1.5 | 36 |
| 38 | 2.2 | 1.9 | 1.7 | 2.3 | 1.9 | 1.7 | 2.4 | 1.9 | 1.7 | 2.3 | 2.0 | 1.5 | 2.0 | 1.9 | 1.4 | 38 |
| 40 | 2.1 | 1.8 | 1.7 | 2.2 | 1.9 | 1.7 | 2.3 | 1.9 | 1.7 | 2.1 | 1.9 | 1.5 | 1.8 | 1.8 | 1.4 | 40 |
| 42 | 2.0 | 1.8 | 1.6 | 2.1 | 1.8 | 1.6 | 2.1 | 1.8 | 1.6 | 1.9 | 1.9 | 1.5 | 1.6 | 1.7 | 1.3 | 42 |
| 44 | 2.0 | 1.8 | 1.6 | 2.0 | 1.8 | 1.6 | 1.9 | 1.8 | 1.6 | 1.8 | 1.8 | 1.4 | 1.4 | 1.5 | 1.3 | 44 |
| 46 | 2.0 | 1.7 | 1.6 | 2.0 | 1.7 | 1.6 | 1.8 | 1.7 | 1.5 | 1.6 | 1.6 | 1.4 | 1.3 | 1.3 | 1.3 | 46 |
| 48 | 1.9 | 1.7 | 1.5 | 1.9 | 1.7 | 1.5 | 1.6 | 1.7 | 1.5 | 1.4 | 1.5 | 1.4 | 1.1 | 1.2 | 1.2 | 48 |
| 50 | 1.8 | 1.6 | 1.5 | 1.7 | 1.7 | 1.5 | 1.4 | 1.6 | 1.5 | 1.3 | 1.4 | 1.3 | | 1.1 | 1.1 | 50 |
| 52 | 1.8 | 1.6 | 1.4 | 1.6 | 1.6 | 1.5 | 1.3 | 1.4 | 1.4 | 1.1 | 1.2 | 1.3 | | 0.9 | 1.0 | 52 |
| 54 | 1.7 | 1.6 | 1.4 | 1.4 | 1.6 | 1.4 | 1.2 | 1.3 | 1.4 | | 1.1 | 1.2 | | | | 54 |
| 56 | 1.7 | 1.5 | 1.4 | 1.3 | 1.4 | 1.4 | | 1.1 | 1.2 | | | 1.1 | | | | 56 |
| 58 | 1.6 | 1.5 | 1.4 | 1.2 | 1.2 | 1.3 | | | 1.1 | | | | | | | 58 |
| 60 | 1.2 | 1.2 | 1.3 | | 1.2 | 1.2 | | | | | | | | | | 60 |
| 62 | | | 1.0 | | | 1.1 | | | | | | | | | | 62 |
| n | 1 | 1 | 1 | 1 | 1 | 1 | 1 | 1 | 1 | 1 | 1 | 1 | 1 | 1 | 1 | n |
| Number of lines | 9 | 9 | 9 | 9 | 9 | 9 | 9 | 9 | 9 | 9 | 9 | 9 | 9 | 9 | 9 | Number of lines |
| II | 0+ | 0+ | 0+ | 0+ | 0+ | 0+ | 46+ | 46+ | 46+ | 9 | 9 | 9 | 1 | 1 | 1 | II |
| III | 92+ | 92+ | 92+ | 92+ | 92+ | 92+ | 92+ | 92+ | 92+ | 92+ | 92+ | 92+ | 1 | 1 | 1 | III |
| IV | 92+ | 92+ | 92+ | 92+ | 92+ | 92+ | 92+ | 92+ | 92+ | 92+ | 92+ | 92+ | 100+ | 100+ | 100+ | IV |
| V | 92+ | 92+ | 92+ | 92+ | 92+ | 92+ | 92+ | 92+ | 92+ | 92+ | 92+ | 92+ | 100+ | 100+ | 100+ | V |
| VI | 46+ | 46+ | 46+ | 92+ | 92+ | 92+ | 92+ | 92+ | 92+ | 92+ | 92+ | 92+ | 100+ | 100+ | 100+ | VI |

STC1600 Working Ranges



Prerequisites:

- ① Boom operation conditions (fully extended boom + jib), max. length is 62 + 36m.
- ② The span of outriggers is 7.8x8.0m.
- ③ 360° working conditions are applied.
- ④ Counterweight is 60T.
- ⑤ Jib offset of 0°.

| Range (m) | Main boom | | | | | | | | | | | | | | | | | | Range (m) |
|-----------------|-----------|-----|-----|------|-----|-----|------|-----|-----|------|-----|-----|------|-----|-----|------|------|------|-----------------|
| | 40.5 | | | 44.7 | | | 49.2 | | | 53.6 | | | 58.1 | | | 62 | | | |
| | 0° | 20° | 40° | 0° | 20° | 40° | 0° | 20° | 40° | 0° | 20° | 40° | 0° | 20° | 40° | 0° | 20° | 40° | |
| 10 | | | | | | | | | | | | | | | | | | | 10 |
| 12 | 3.3 | | | | | | | | | | | | | | | | | | 12 |
| 14 | 3.3 | | | 3.1 | | | 2.7 | | | | | | | | | | | | 14 |
| 16 | 3.3 | | | 3.1 | | | 2.7 | | | | | | | | | | | | 16 |
| 18 | 3.2 | | | 3.0 | | | 2.7 | | | 2.3 | | | 2.1 | | | | | | 18 |
| 20 | 3.2 | | | 3.0 | | | 2.6 | | | 2.3 | | | 2.1 | | | 2.0 | | | 20 |
| 22 | 3.2 | | | 3.0 | | | 2.6 | | | 2.3 | | | 2.1 | | | 2.0 | | | 22 |
| 24 | 3.0 | | | 2.9 | | | 2.6 | | | 2.3 | | | 2.0 | | | 1.9 | | | 24 |
| 26 | 2.9 | | | 2.8 | | | 2.5 | | | 2.3 | | | 2.0 | | | 1.9 | | | 26 |
| 28 | 2.8 | | | 2.7 | | | 2.4 | | | 2.3 | | | 1.9 | | | 1.8 | | | 28 |
| 30 | 2.7 | | | 2.6 | | | 2.4 | | | 2.2 | | | 1.9 | | | 1.8 | | | 30 |
| 32 | 2.6 | | | 2.5 | | | 2.3 | | | 2.1 | | | 1.8 | | | 1.7 | | | 32 |
| 34 | 2.4 | | | 2.4 | | | 2.3 | | | 2.1 | | | 1.6 | | | 1.5 | | | 34 |
| 36 | 2.3 | | | 2.3 | | | 2.2 | | | 2.0 | | | 1.5 | | | 1.4 | | | 36 |
| 38 | 2.3 | | | 2.3 | | | 2.2 | | | 2.0 | | | 1.4 | | | 1.2 | | | 38 |
| 40 | 2.2 | | | 2.2 | | | 2.1 | | | 1.9 | | | 1.3 | | | 1.1 | | | 40 |
| 42 | 2.1 | | | 2.1 | | | 2.0 | | | 1.9 | | | 1.2 | | | 1.0 | | | 42 |
| 44 | 2.1 | | | 2.0 | | | 1.9 | | | 1.8 | | | 1.1 | | | 0.9 | | | 44 |
| 46 | 2.0 | | | 1.9 | | | 1.9 | | | 1.7 | | | 1.0 | | | | | | 46 |
| 48 | 1.9 | | | 1.9 | | | 1.8 | | | 1.7 | | | 1.0 | | | | | | 48 |
| 50 | 1.8 | | | 1.8 | | | 1.8 | | | 1.6 | | | | | | | | | 50 |
| 52 | 1.7 | | | 1.8 | | | 1.7 | | | 1.5 | | | | | | | | | 52 |
| 54 | 1.7 | | | 1.7 | | | 1.6 | | | 1.4 | | | | | | | | | 54 |
| 56 | 1.6 | | | 1.6 | | | 1.4 | | | 1.4 | | | | | | | | | 56 |
| 58 | 1.5 | | | 1.5 | | | 1.4 | | | 1.2 | | | | | | | | | 58 |
| 60 | 1.5 | | | 1.4 | | | 1.3 | | | 1.0 | | | | | | | | | 60 |
| 62 | 1.4 | | | 1.2 | | | 1.1 | | | | | | | | | | | | 62 |
| 64 | 1.1 | | | 1.2 | | | | | | | | | | | | | | | 64 |
| 66 | | | | 1.2 | | | | | | | | | | | | | | | 66 |
| n | 1 | 1 | 1 | 1 | 1 | 1 | 1 | 1 | 1 | 1 | 1 | 1 | 1 | 1 | 1 | 1 | 1 | 1 | n |
| Number of lines | 9 | 9 | 9 | 9 | 9 | 9 | 9 | 9 | 9 | 9 | 9 | 9 | 9 | 9 | 9 | 9 | 9 | 9 | Number of lines |
| II | 0 | 0 | 0 | 0+ | 0+ | 0+ | 0+ | 0+ | 0+ | 46+ | 46+ | 46+ | 9 | 9 | 9 | 1 | 1 | 1 | II |
| III | 0+ | 0+ | 0+ | 92+ | 92+ | 92+ | 92+ | 92+ | 92+ | 92+ | 92+ | 92+ | 92+ | 92+ | 92+ | 1 | 1 | 1 | III |
| IV | 9 | 9 | 9 | 92+ | 92+ | 92+ | 92+ | 92+ | 92+ | 92+ | 92+ | 92+ | 92+ | 92+ | 92+ | 100+ | 100+ | 100+ | IV |
| V | 9 | 9 | 9 | 92+ | 92+ | 92+ | 92+ | 92+ | 92+ | 92+ | 92+ | 92+ | 92+ | 92+ | 92+ | 100+ | 100+ | 100+ | V |
| VI | 9 | 9 | 9 | 46+ | 46+ | 46+ | 92+ | 92+ | 92+ | 92+ | 92+ | 92+ | 92+ | 92+ | 92+ | 100+ | 100+ | 100+ | VI |

STC1600 TRUCK CRANE WHEEL CRANE FAMILY MAP

TRUCK CRANE



STC200
Maximum Load Capacity: 20t
Telescopic Boom: 4 Sections, 10.6-33m



STC250
Maximum Load Capacity: 25t
Telescopic Boom: 4 Sections, 10.65-33.5m



STC250H
Maximum Load Capacity: 25t
Telescopic Boom: 5 Sections, 10.5-39.5m



STC300TH
Maximum Load Capacity: 30t
Telescopic Boom: 4 Sections, 10.6-33.5m



STC300H
Maximum Load Capacity: 30t
Telescopic Boom: 5 Sections, 10.5-39.5m



STC500
Maximum Load Capacity: 50t
Telescopic Boom: 5 Sections, 11.5-43m



STC550
Maximum Load Capacity: 55t
Telescopic Boom: 5 Sections, 11.5-43m



STC550EYR
Maximum Load Capacity: 55t
Telescopic Boom: 5 Sections, 11.5-43m



STC600
Maximum Load Capacity: 60t
Telescopic Boom: 5 Sections, 11.5-43m



STC750
Maximum Load Capacity: 75t
Telescopic Boom: 5 Sections, 11.8-45m



STC800
Maximum Load Capacity: 80t
Telescopic Boom: 5 Sections, 11.8-45m



STC800EYR
Maximum Load Capacity: 80t
Telescopic Boom: 5 Sections, 11.8-45m



STC1000
Maximum Load Capacity: 100t
Telescopic Boom: 5 Sections, 13.5-52m



STC1000C
Maximum Load Capacity: 100t
Telescopic Boom: 6 Sections, 13.25-60m



STC1300C
Maximum Load Capacity: 130t
Telescopic Boom: 6 Sections, 13.3-60m

ALL TERRAIN CRANE



SAC1800
Maximum Load Capacity: 180t
Telescopic Boom: 6 Sections, 13.5-62m



SAC2200
Maximum Load Capacity: 220t
Telescopic Boom: 6 Sections, 13.5-62m



SAC3000
Maximum Load Capacity: 300t
Telescopic Boom: 7 Sections, 15.4-80m



SAC3500
Maximum Load Capacity: 350t
Telescopic Boom: 6 Sections, 15.2-70m



SAC6000
Maximum Load Capacity: 600t
Telescopic Boom: 7 Sections, 17.1-90m

ROUGH-TERRAIN CRANE



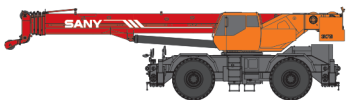
SRC350
Maximum Load Capacity: 35t
Telescopic Boom: 4 Sections, 10-31.5m



SRC550
Maximum Load Capacity: 55t
Telescopic Boom: 4 Sections, 11.25-34.5m



SRC550H
Maximum Load Capacity: 55t
Telescopic Boom: 5 Sections, 11.5-42.5m



SRC750
Maximum Load Capacity: 75t
Telescopic Boom: 5 Sections, 11.8-45m



Quality Changes the World

SANY HEAVY INDUSTRY INDIA PVT. LTD.

HEAD OFFICE

Address : Plot No. E-4, Chakan Industrial Area Phase-III,
Village : Kuruli, Taluka: Khed, District: Pune - 410501, Maharashtra, INDIA.
Tel : +91 21 35670288, Fax: +91 21 35670300
E-mail : customercare@sany.in
Website : www.sany.in

Toll Free No.: 1800-209-3337

